



MBGRP48-SL



## MBGRP-SL SERIES

Bottom Mounted  
 Slide Glass Door  
 Refrigerator Merchandisers  
 With Lighted Sign

### MODELS

- MBGRP48-SL
- MBGRP74-SL

## FEATURES

### CONSTRUCTION

- Standard interior LED lighting
- Electronic digital thermostat
- 24 gauge painted textured galvanized steel interior and exterior
- Standard exterior finishes: Black or white
- Standard interior finish: White with stainless steel floor
- Top backlit graphic panel (standard blank sign applied without graphics)
- 1<sup>3</sup>/<sub>4</sub>" thick state-of-the-art, foamed-in-place "zero ODP" polyurethane insulation provides high R-value
- Adjustable legs for leveling
- Four adjustable heavy-duty epoxy-coated shelves per door adjustable on 1/2" pilasters
- Merchandiser profile matches other Fusion Plus refrigerator and freezer models

### DOORS

- Auto-close, double pane, safety glass doors
- Contemporary style black door frame

### REFRIGERATION

- Self-contained bottom mount refrigeration system designed for optimum energy efficiency and low noise
- ENERGY STAR qualified, may be eligible for rebate programs
- Top mounted, low profile interior evaporator housing
- Energy-free condensate removal
- Refrigerant: R-134a
- Temperature range: 34° to 41°F (1° to 5°C)

### WARRANTY

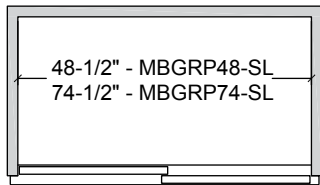
- **Standard limited three year parts and labor**
- **Additional two year coverage on compressor part**

## OPTIONS

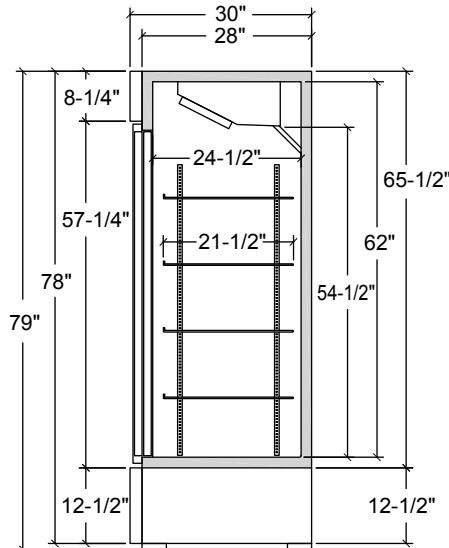
- Casters
- Additional shelving

### TECHNICAL SPECIFICATIONS

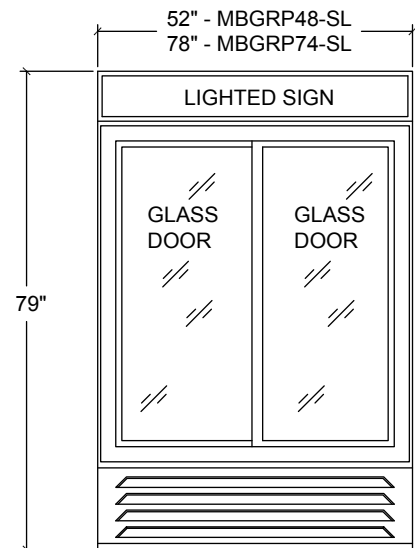
MODEL	DIMENSIONS (in.)			DIMENSIONS (mm)			VOLTS	AMPS	UNIT H.P.	NO. OF DOORS	NO. OF SHELVES	SHELF SIZE (in.)	CAP. CU. FT.	SHIP WT. (LB/KG)
	L	D	H	L	D	H								
MBGRP48-SL	52	30	79	1321	762	2007	115	6.9	1/3	2	8	23 <sup>1</sup> / <sub>2</sub> L x 21 <sup>1</sup> / <sub>2</sub> D	45.7	530/241
MBGRP74-SL	78	30	79	1981	762	2007	115	7.7	1/2	3	12	23 <sup>1</sup> / <sub>2</sub> L x 21 <sup>1</sup> / <sub>2</sub> D (outer doors), 25 <sup>1</sup> / <sub>2</sub> L x 21 <sup>1</sup> / <sub>2</sub> D (middle door)	70.2	715/325



PLAN VIEW



SIDE VIEW



ELEVATION VIEW

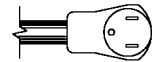
### LISTINGS



- Listed under NSF-7 for the storage and/or display of packaged food
- Meets 2012 Federal DOE Requirements
- Meets Canadian energy efficiency regulations

### HOOKUP

All models via plug in, 10 foot long, flexible three wire 14/3 cord with molded plug.



NEMA 5-15P

### BID SPECIFICATIONS

Item no. MBGRP\_\_\_\_-SL. Provide \_\_\_\_\_ Bottom Mounted Slide Glass Door Refrigerator Merchandiser(s) With Lighted Sign, Master-Bilt model no. MBGRP\_\_\_\_-SL.

Merchandiser will be constructed of 24 gauge painted textured galvanized steel interior and exterior. Standard equipment will include interior LED lighting, top backlit graphic panel and four epoxy-coated shelves

per door adjustable on 1/2" pilasters.

Doors will be auto-close, double pane, heated safety glass doors with heated frames.

Refrigeration system will be self-contained and designed for optimum energy efficiency and low noise. Also standard will be an energy-free condensate removal system.

The refrigerant will be R-134a and the temperature range will be 34° to 41°F (1° to 5°C)

Merchandiser to have standard limited three year parts and labor warranty with additional two year coverage on compressor part.

Merchandiser to be UL and C-UL listed, UL EPH classified, and ENERGY STAR qualified. Merchandiser will also meet Canadian energy efficiency regulations.

**NOTE:** Cabinet designed for optimum performance in air-conditioned area at 75°F ambient and 55% relative humidity. All specifications subject to change without notice.