



QMVM-36L

QMVM-L SERIES

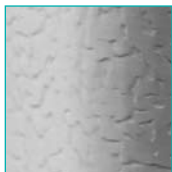
Quantum Series Medium Temp Low Profile Open Display Merchandisers

MODELS

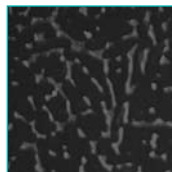
- QMVM-36L
- QMVM-48L

FEATURES

NEW STANDARD TEXTURED FINISH



Standard white



Black also available

CONSTRUCTION

- Standard electronic controller with these features:
 - Ability to monitor defrost functions from the front panel interface
 - Audible and visual alarm
 - Eliminates room thermostat, defrost termination/fan delay control, defrost timer and digital thermometer or other temperature indicator
- 24 gauge painted textured galvanized steel exterior and interior

- Stainless steel floor pans (removable for easy service)
- Shelves adjustable in 1" increments
- Two lighted tiers of two-position shelving standard
- Perforated interior back wall and top for better air flow
- Price tag molding
- 2" foamed-in-place "zero ODP" urethane insulation

REFRIGERATION

- Refrigerant: R-134a
- Front air intake and rear air discharge
- Self-contained, bottom mount refrigeration system
- Minimum of 6" clearance between cabinet back and wall and a clearance of 10" at top
- Temperature range: 34° to 41°F (1° to 5°C)
- R-factor (insulation efficiency rating): 17.24
- **Drain plumbing hookup recommended. Condensate pan available if there is no access**

to drain plumbing. Condensate pan must be field installed and requires a dedicated 15 amp, 120 volt circuit.

WARRANTY

- Standard limited three year extended compressor and two year limited parts and labor

OPTIONS

- Custom exterior and interior colors
- Condensate evaporator drain pan
NOTE: Must be field installed and requires a dedicated 20A, 120v circuit.
- Condensate pump
- Product hooks
- Extra shelves (non-lighted)
- 1" vinyl bumper in choice of black, blue, brown, green, red or white



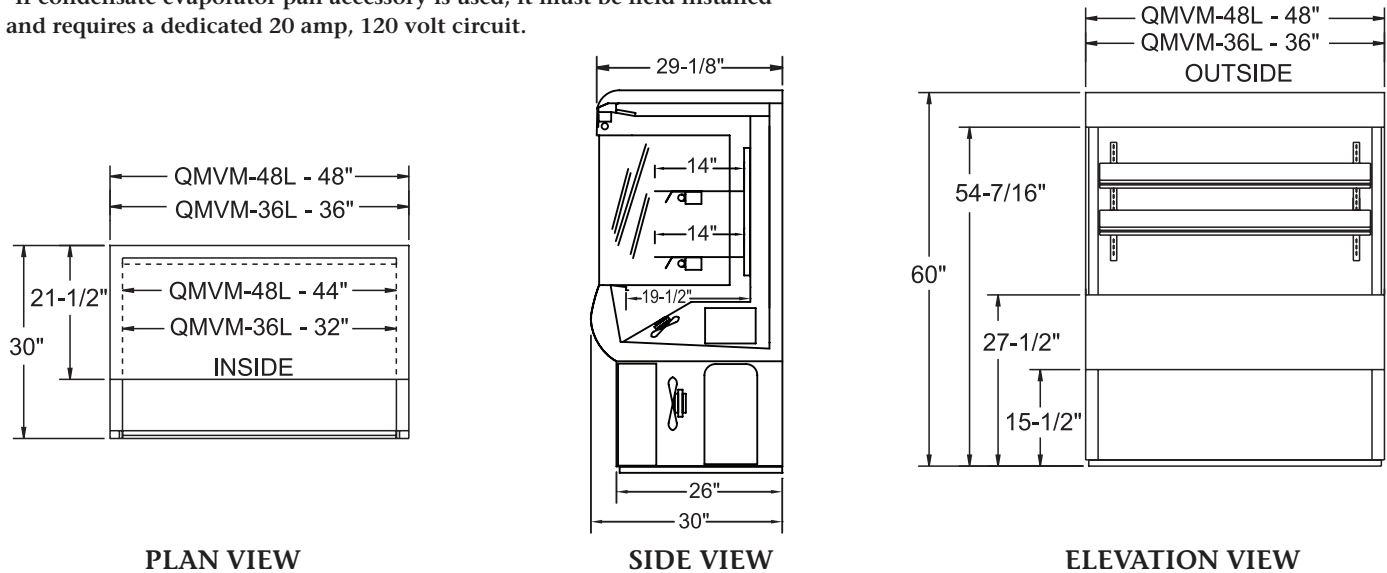
QMVM-L SERIES

QUANTUM SERIES MEDIUM TEMP LOW PROFILE OPEN DISPLAY MERCHANDISERS

TECHNICAL SPECIFICATIONS

MODEL	DIMENSIONS (in.)			DIMENSIONS (mm)			VOLTS	AMPS*	UNIT H.P.	NO. OF SHELVES	STANDARD SHELF SIZE (in inches)	CAP. CU. FT.	SHIP CU. FT.	SHIP WT. LB/KG
	L	D	H	L	D	H								
QMVM-36L	36	30	60	914	762	1524	115	14.8	1/2	2	14 x 31 ¹ / ₈	11.2	67.0	490/223
QMVM-48L	48	30	60	1219	762	1524	115	14.9	3/4	2	14 x 43 ¹ / ₈	15.4	81.0	580/264

*If condensate evaporator pan accessory is used, it must be field installed and requires a dedicated 20 amp, 120 volt circuit.

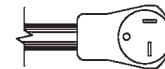


LISTINGS



HOOKUP

Electrical hookup: 115v
 Plumbing hookup: Requires connection to customer's drain



NEMA 5-20P

RECOMMENDED OPERATING CONDITIONS

- Merchandisers designed to hold product in the 34° to 41°F (1° to 5°C) range
- Designed to operate in air-conditioned stores where the maximum temperature is 75°F and the maximum relative humidity is 55%
- Should not be installed in direct sunlight
- Should not be installed near HVAC vents, fans or doorways that will disrupt airflow and compromise the function of the air screen inside the case
- Bottom shelf should not be loaded such that the front air intake is obstructed
- Floor drain should be properly trapped
- Factory installed controls should not be altered, removed or replaced without consent of the factory
- Product must not be displayed in the cold air curtain

BID SPECIFICATIONS

Item no. QMVM-____L
 Provide _____ () Quantum Series Medium Temp Low Profile Open Display Merchandiser(s), Master-Bilt model no. QMVM-____L.
 Merchandiser to be constructed of 24 gauge painted textured galvanized steel interior and exterior and will be equipped with an elec-

tronically controlled monitoring system.
 Merchandiser to have two-position shelves adjustable in 1" increments, perforated interior back wall, independent shelf lighting and price tag molding. Merchandiser will also contain 2" foamed-in-place "zero ODP" urethane insulation.
 The refrigeration system is to be self-

contained, with front condenser air intake and rear air discharge and use R-134a refrigerant. The temperature range is 34° to 41°F (1° to 5°C). Merchandiser to have standard limited three year extended compressor warranty and two year limited parts and labor warranty. It is also to be UL and C-UL listed and UL EPH classified.



908 Highway 15 North • New Albany, MS 38652
 PHONE: 800-647-1284 or 662-534-9061 • FAX: 800-232-3966 or 662-534-6049 • www.master-bilt.com

All specifications subject to change without notice.