



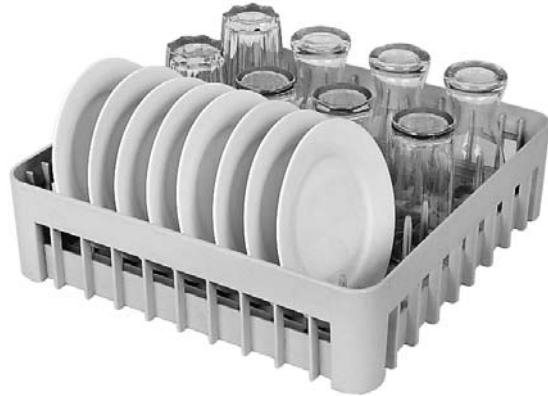
Simply Engineered Better

Project _____
Item No. _____
Quantity _____

RACKS

Racks

Racks and Accessories for the MD-18 Series Glasswashers (Model MD18-1 or MD18-2)



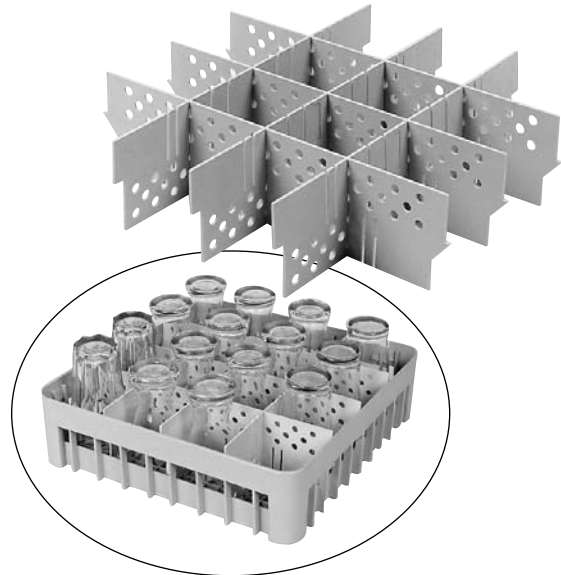
Standard Peg Rack

16" x 16" square rack for handling dishes and other wares



Standard Flat Rack

16" x 16" square rack for handling silverware, pans, etc.



Variable Spaced Dividers

Used in conjunction with a standard 16" x 16" flat rack to form specialty glass racks

MD003 Printed in U.S.A.

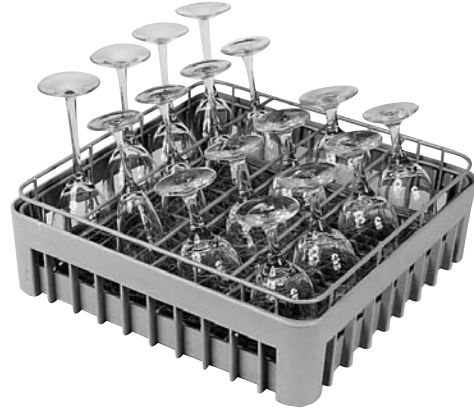
Moyer Diebel – USA

P.O. Box 4183, Winston-Salem, NC 27115 Tel: 336/661-1992 Fax: 336/661-1979 800/228-8350 www.moyerdiebel.com

Moyer Diebel Ltd. – Canada

2674 North Service Rd., Jordan Station, Ontario, Canada L0R 1S0 Tel: 800/263-5798 Fax: 905/562-4618 sales@moyerdiebellimited.com





GR-1 Glass rack

A coated wire rack inserted into the standard flat rack to hold glasses at an angle allowing bases to drain



GR-2 Glass Rack

A tall coated wire rack ideal for holding taller pilsner style glasses at an angle



GR-3 Glass rack

A half size coated wire rack for holding long stem glasses to minimize breakag