



Simply Engineered Better

RACKS

Racks and Accessories for the MD-18 Series
Glasswashers (Model MD18-1 or MD18-2)

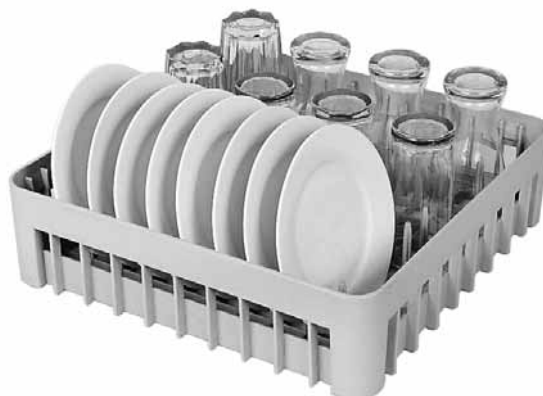


STANDARD FLAT RACK

16" x 16" square rack for handling silverware,
pans, etc.

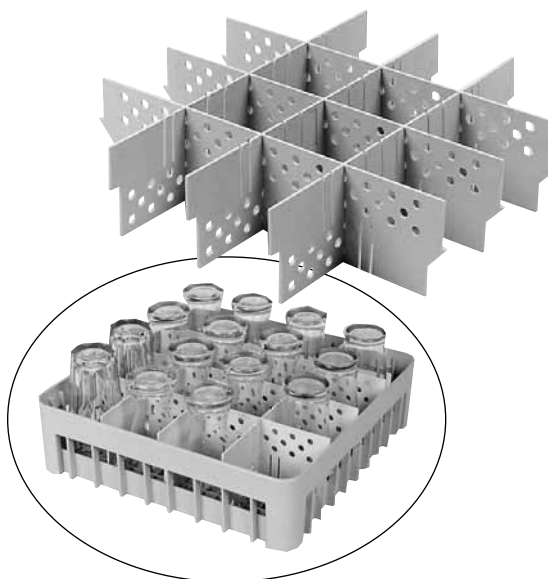
Project _____
Item No. _____
Quantity _____

RACKS



STANDARD PEG RACK

16" x 16" square rack for handling dishes and
other wares



VARIABLE SPACED DIVIDERS

Used in conjunction with a standard 16" x 16"
flat rack to form specialty glass racks

Moyer Diebel – USA

P.O. Box 4183, Winston-Salem, NC 27115 Tel: 336/661-1992 Fax: 336/661-1979 800/228-8350 www.moyerdiebel.com

Moyer Diebel Ltd. – Canada

2674 North Service Rd., Jordan Station, Ontario, Canada L0R 1S0 Tel: 800/263-5798 Fax: 905/562-4618





Simply Engineered Better

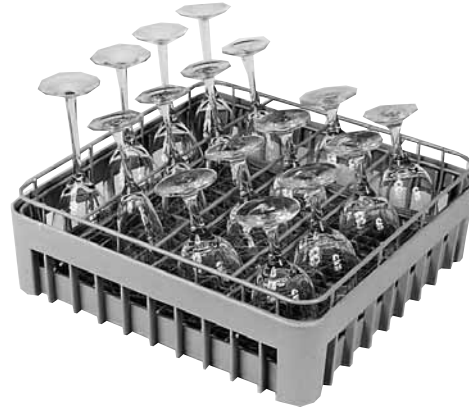
RACKS

Specialty Glass Racks



GR-2 GLASS RACK

A tall coated wire rack ideal for holding taller pilsner style glasses at an angle



GR-1 GLASS RACK

A coated wire rack inserted into the standard flat rack to hold glasses at an angle allowing bases to drain



GR-3 GLASS RACK

A half size coated wire rack for holding long stem glasses to minimize breakag