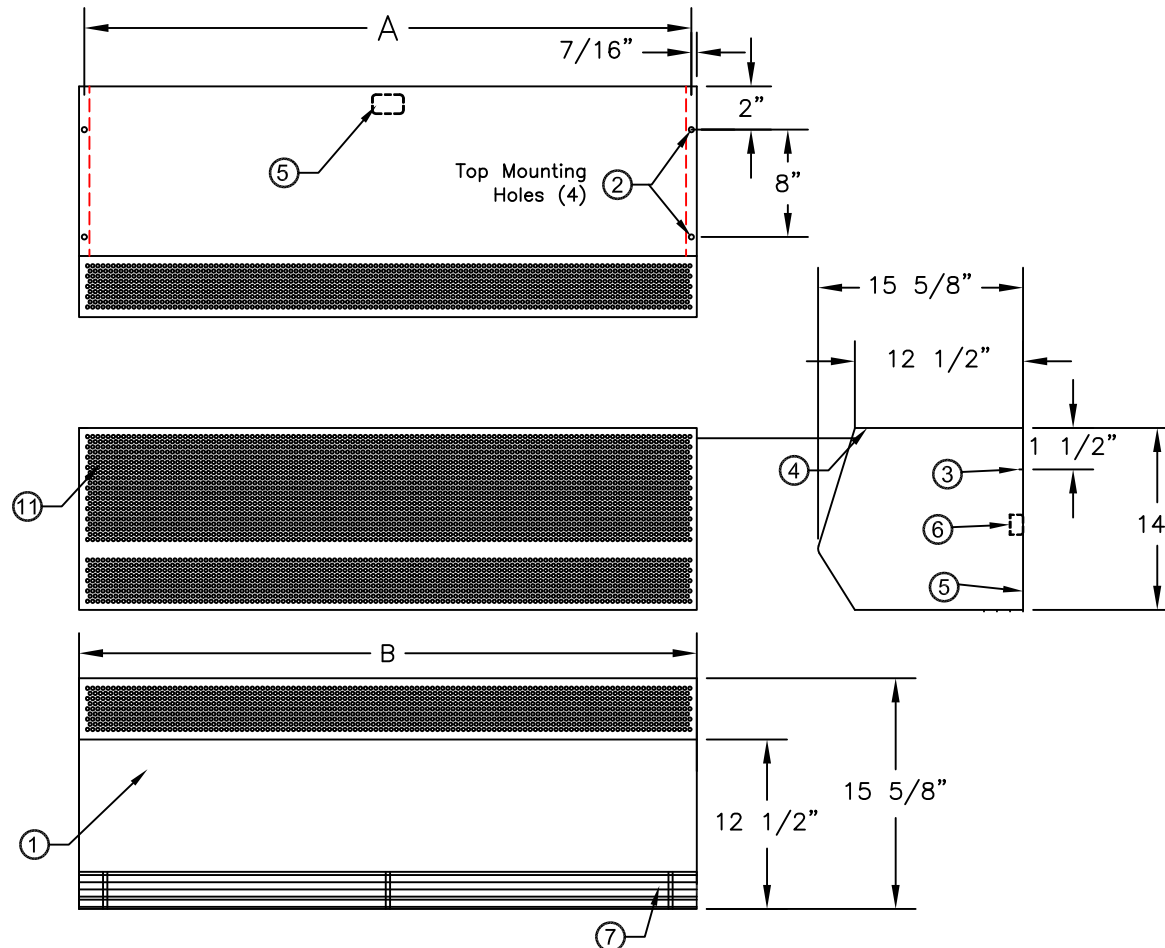


**NOTES:**

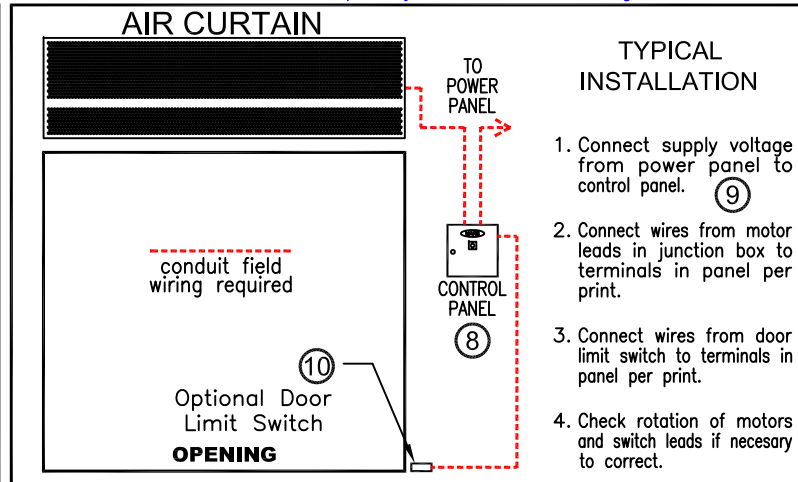
- ① This product is designed to comply with the National Electric Code (NEC), ETL listed for US & Canada, and bear the CE mark.
- ② 7/16" mounting holes (4) provided, (2) on each end.
- ③ 1/2" key hole slots (2) provided, (1) on each end for wall mounting.
- ④ All units have a self contained one piece cabinet, fire retardant and corrosion proof paint lock metal, double protected with baked on gray color, rust preventative electrostatic polyurethane powder coating.
- ⑤ Cabinet has sufficient strength for fastening to wall on both ends without intermediate support.
- ⑥ Internal J-Box(es) for electrical wiring.
- ⑦ Unit is to be installed such that air flow is unobstructed. Air discharge nozzle containing adjustable air directional vanes with 40° sweep front to back.
- ⑧ Optional motor control panel. Overloads are factory pre-set. Standard procedure is to ship panel loose for remote mount. Can be factory mounted on either left or right hand side of air curtain housing.
- ⑨ Circuit protection as per NEC by others.
- ⑩ Optional door limit switch is field installed and is to be wired to the control panel. Switch to be mounted such that the air curtain turns on as door begins to open.
- ⑪ EP2 units with 115 V motors will have an intake screen with hole pattern in a narrower region (8 1/2" X dimension B) of the intake face area.



-2, -3 & -4 designates the number of motors.

\*NOTE: Intake screen size and quantity varies with unit length.

MODEL NUMBER	MOUNTING CENTERS A	OVERALL LENGTH B
EP2 36-1U	35 1/8"	36"
EP2 48-1U	47 1/8"	48"
EP2 60-1U	59 1/8"	60"
EP2 72-2U	71 1/8"	72"
EP2 84-2U	83 1/8"	84"
EP2 96-2U	95 1/8"	96"
EP2 108-2U	107 1/8"	108"
EP2 108-3U	107 1/8"	108"
EP2 120-2U	119 1/8"	120"
EP2 120-3U	119 1/8"	120"
EP2 144-3U	143 1/8"	144"



PROJECT	Model No.:
LOCATION	Drawing No.:
ARCHITECT	Date
ENGINEER	Sheet of
	Drawn By:
	Checked By:



AIR SYSTEMS

14716 S. BROADWAY • GARDENA, CA 90248 • USA  
 TEL:(310) 532-1555 • (800) 421-1266 • FAX:(310) 324-3030  
 Web Site: www.marsair.com • E-mail: info@marsair.com

**EXTRA POWER 2 (EP2) 3 HP UNHEATED MODELS**

**JOB:** \_\_\_\_\_

**ARCHITECT/ENGINEER:** \_\_\_\_\_

**DRWG.:** \_\_\_\_\_

**CONTRACTOR:** \_\_\_\_\_

**SHEET** \_\_\_\_ **of** \_\_\_\_ **DATE:** \_\_\_\_\_

MARK	EXTRA POWER MODEL NUMBER	NO. REQ'D	LENGTH	WEIGHT (LBS)	MOTOR FAN DATA								dBA Measured 10 ft. from Nozzle	REMARKS	
					MOTOR HP	MOTOR RPM**	VOLTS & PHASE	FLA*		FLA*		MAX FPM** at Nozzle			MAX CFM** at Nozzle
								SINGLE PHASE	THREE PHASE	208 / 230V	460V				
	EP2 36-1U		3'	130	3	3450		30.0	16.5/15.0	8.3/7.6	3.8	6100	4800	76	
	EP2 48-1U		4'	140	3	3450		30.0	16.5/15.0	8.3/7.6	3.8	4800	4800	76	
	EP2 60-1U		5'	155	3	3450		30.0	16.5/15.0	8.3/7.6	3.8	3840	4800	76	
	EP2 72-2U		6'	250	Two	3	3450	60.0	33.0/30.0	16.6/15.2	7.6	6100	9600	79	
	EP2 84-2U		7'	265	Two	3	3450	60.0	33.0/30.0	16.6/15.2	7.6	5485	9600	79	
	EP2 96-2U		8'	280	Two	3	3450	60.0	33.0/30.0	16.6/15.2	7.6	4800	9600	79	
	EP2 108-2U		9'	295	Two	3	3450	60.0	33.0/30.0	16.6/15.2	7.6	4200	9600	79	
	EP2 108-3U		9'	375	Three	3	3450	90.0	49.5/45.0	24.9/22.8	11.4	6222	14,000	81	
	EP2 120-2U		10'	305	Two	3	3450	60.0	33.0/30.0	16.6/15.2	7.6	3840	9600	79	
	EP2 120-3U		10'	390	Three	3	3450	90.0	49.5/45.0	24.9/22.8	11.4	5760	14,400	81	
	EP2 144-3U		12'	420	Three	3	3450	90.0	49.5/45.0	24.9/22.8	11.4	4800	14,400	81	

**EQUIPMENT SPECIFICATIONS - Standard Features**

**GENERAL**

Air curtain shall be a Mars Air Doors® brand air curtain: Type Extra Power Unheated.

**APPROVALS**

Air curtain shall meet the requirements of the National Electric Code. (N.E.C.), ETL Listed for US & Canada, and bear the CE mark.

**CABINET**

Cabinet shall be a self contained one piece housing with sufficient strength for fastening to wall on both ends without intermediate support. Cabinet constructed of fire retardant, corrosion proof paint lock metal and double protected with gray baked rust preventative electrostatic polyurethane powder coating. Discharge air outlet nozzle shall be wedge shaped containing adjustable air directional vanes with 40° sweep front to back. Motor/Fan assembly to be easily accessible for maintenance.

**MOTORS AND BLOWER WHEELS**

Motor(s) shall be totally enclosed air over (TEAO) type suitable for continuous heavy duty, all angle operation. Construction shall include sealed lifetime pre-lubricated ball bearings, resilient mounted and protected by an automatic reset thermal overload switch. Motor(s) to have double extended shaft and direct drive, double inlet, dynamically balanced forward curved squirrel cage blower wheels.

**ELECTRICAL WIRING**

All junction boxes are internally mounted: one motor 1 Phase-(1) 4"x 4"; one motor 3 Phase-(1) 2"x 4"; two motors-(1) 4"x 4"; three or four motors-(2) 4"x 4".

**GUARANTEE**

Shall be five years on all parts.

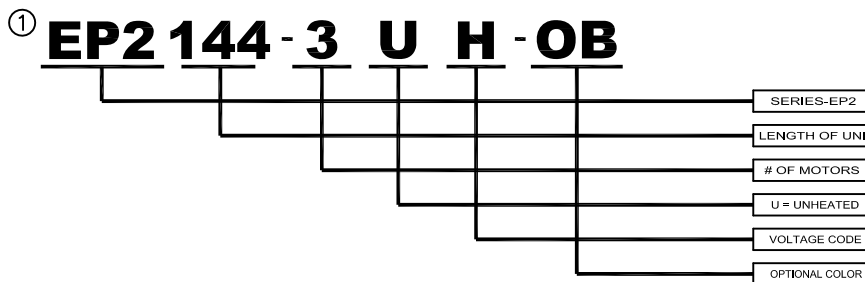
**ACCESSORIES**

Refer to optional features and accessories page.

\* - For Ampacity Multiply FLA X 1.25

\*\* - 17% Reduction in Performance on units with 50Hz.

**EXAMPLE**



SIZE	VOLTAGE	CODE
48"-144"	115/1/60	A
48"-144"	208-230/1/60	D
48"-144"	220/1/50	U
48"-144"	208-230/3/60	G
48"-144"	460/3/60	H
48"-144"	575/3/60	I

COLOR	CODE
OBSIDIAN BLACK	OB
TITANIUM SILVER	TS
PEARL WHITE	PW
SPARTAN BRONZE	SB
BATTLESHIP GRAY	BG

**MADE WITH PRIDE IN THE U.S.A.**

**EXTRA POWER 2 (EP2) 3 HP UNHEATED MODELS**