

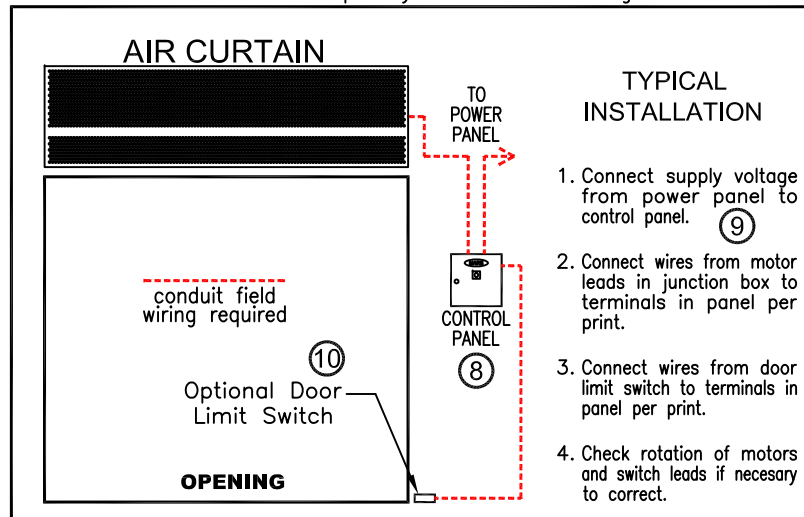
**NOTES:**

- ① This product is designed to meet the National Electric Code (NEC) and is ETL Listed for the US and Canada and bear the CE mark.
- ② 7/16" top mounting holes (4) provided, (2) on each end.
- ③ 1/2" key hole slots and 7/16" mounting holes (4) provided, (2) on each end for wall mounting.
- ④ All units have a self contained one piece cabinet, fire retardant and corrosion proof paint lock metal double protected with baked on Obsidian Black color, rust preventative electrostatic polyurethane powder coating.
- ⑤ Cabinet has sufficient strength for fastening to wall on both ends without intermediate support.
- ⑥ Internal J-Box(es) for electrical wiring.
- ⑦ Unit is to be installed such that air flow is unobstructed. Air discharge nozzle containing adjustable air directional vanes with 40° sweep front to back.
- ⑧ Optional motor control panel. Overloads are factory pre-set. Standard procedure is to ship panel loose for remote mount. Can be factory mounted on either left or right hand side of air curtain housing. Please specify.
- ⑨ Circuit protection as per NEC by others.
- ⑩ Optional door limit switch is field installed and is to be wired to the control panel. Switch to be mounted such that the air curtain turns on as door begins to open.



-2, -3 & -4 designates the number of motors. \*NOTE: Intake screen size and quantity varies with unit length.

MODEL NUMBER	MOUNTING A	LENGTH B
STD236-1U	35 1/4"	36"
STD242-1U	41 1/4"	42"
STD248-1U	47 1/4"	48"
STD260-1U	59 1/4"	60"
STD260-2U	59 1/4"	60"
STD264-2U	63 1/4"	64"
STD272-2U	71 1/4"	72"
STD278-2U	77 1/4"	78"
STD284-2U	83 1/4"	84"
STD296-2U	95 1/4"	96"
STD296-3U	95 1/4"	96"
STD2108-2U	107 1/4"	108"
STD2108-3U	107 1/4"	108"
STD2120-3U	119 1/4"	120"
STD2144-3U	143 1/4"	144"
STD2144-4U	143 1/4"	144"



PROJECT	Model No.:
LOCATION	Drawing No.:
ARCHITECT	Date
ENGINEER	Sheet of
	Drawn By:
	Checked By:



**AIR SYSTEMS**  
 14716 S. BROADWAY • GARDENA, CA 90248 • USA  
 TEL:(310) 532-1555 • (800) 421-1266 • FAX:(310) 324-3030  
 Web Site: www.marsair.com • E-mail:info@marsair.com

**STANDARD 2 (STD2) 1/2 HP UNHEATED MODELS**

**JOB:** \_\_\_\_\_

**ARCHITECT/ENGINEER:**  
**CONTRACTOR:**

**DRWG.:** \_\_\_\_\_  
**SHEET** \_\_\_\_\_ **of** \_\_\_\_\_ **DATE:** \_\_\_\_\_

MARK	STANDARD MODEL NUMBER	NO. REQ'D	LENGTH	WEIGHT (LBS)	MOTOR FAN DATA										REMARKS
					MOTOR HP	MOTOR RPM**	VOLTS & PHASE	FLA* SINGLE PHASE		FLA* THREE PHASE		Max FPM** at Nozzle	Max CFM** at Nozzle	dBA 10 ft. from Nozzle	
								115V	208V/230V	208V/230V	460V				
	STD236-1U		3'	60	1/2	1750		5.1	2.5/2.5	1.8/1.6	0.8	3400	2550	66	
	STD242-1U		3' 6"	65	1/2	1750		5.1	2.5/2.5	1.8/1.6	0.8	2925	2550	66	
	STD248-1U		4'	70	1/2	1750		5.1	2.5/2.5	1.8/1.6	0.8	2550	2550	66	
	STD260-1U		5'	75	1/2	1750		5.1	2.5/2.5	1.8/1.6	0.8	2550	2550	66	
	STD260-2U		5'	90	Two 1/2	1750		10.2	5.0/5.0	3.6/3.2	1.6	3825	5100	68	
	STD264-2U		5' 4"	110	Two 1/2	1750		10.2	5.0/5.0	3.6/3.2	1.6	3825	5100	68	
	STD272-2U		6'	120	Two 1/2	1750		10.2	5.0/5.0	3.6/3.2	1.6	3475	5100	68	
	STD278-2U		6' 6"	123	Two 1/2	1750		10.2	5.0/5.0	3.6/3.2	1.6	3200	5100	68	
	STD284-2U		7'	125	Two 1/2	1750		10.2	5.0/5.0	3.6/3.2	1.6	2925	5100	68	
	STD296-2U		8'	135	Two 1/2	1750		10.2	5.0/5.0	3.6/3.2	1.6	2550	5100	68	
	STD296-3U		8'	165	Three 1/2	1750		15.3	7.5/7.5	5.4/4.8	2.4	3825	7650	71	
	STD2108-2U		9'	145	Two 1/2	1750		10.2	5.0/5.0	3.6/3.2	1.6	2550	5100	68	
	STD2108-3U		9'	175	Three 1/2	1750		15.3	7.5/7.5	5.4/4.8	2.4	3400	7650	71	
	STD2120-3U		10'	185	Three 1/2	1750		15.3	7.5/7.5	5.4/4.8	2.4	3060	7650	71	
	STD2144-3U		12'	200	Three 1/2	1750		15.3	7.5/7.5	5.4/4.8	2.4	2550	7650	71	
	STD2144-4U		12'	235	Four 1/2	1750		20.4	10.0/10.0	7.2/6.4	3.2	3400	10,200	73	

**EQUIPMENT SPECIFICATIONS - Standard Features**

**GENERAL**

Air curtain shall be a Mars® Air Systems brand air curtain: Type STD2 Industrial Unheated.

**APPROVALS**

Air curtain shall meet the requirements of the National Electric Code. (N.E.C.), ETL Listed for US & Canada, and bear the CE mark.

**CABINET**

Cabinet shall be a self contained one piece housing with sufficient strength for fastening to wall on both ends without intermediate support. Cabinet constructed of fire retardant, corrosion proof paint lock metal double protected with baked on Obsidian Black color, rust preventative electrostatic polyurethane powder coating. Discharge air outlet nozzle is internal wedge shaped containing adjustable air directional aluminum vanes with 40° sweep front to back. Motor/Fan assembly to be easily accessible for maintenance.

**MOTORS AND BLOWER WHEELS**

Motor(s) shall be totally enclosed air over (TEAO) type suitable for continuous heavy duty, all angle operation. Construction shall include sealed lifetime pre-lubricated ball bearings, resilient mounted and protected by an automatic reset thermal overload switch. Motor(s) to have double extended shaft and direct drive, double inlet, dynamically balanced forward curved squirrel cage blower wheels.

**ELECTRICAL WIRING**

All junction boxes are internally mounted: one motor-(1) 2"x 4"; two motors-(1) 4"x 4"; three or four motors-(2) 4"x 4".

**GUARANTEE**

Shall be 5 years on all parts.

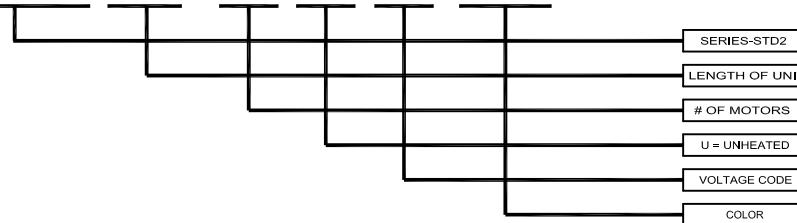
**ACCESSORIES**

Refer to the optional features and accessories page.

- \* - For Ampacity Multiply FLA X 1.25
- \*\* - 17% Reduction in Performance on units with 50Hz.

**EXAMPLE**

**STD2144-3 U H-OB**



SIZE	VOLTAGE	CODE
36"-144"	115/1/60	A
36"-144"	208-230/1/60	D
36"-144"	220/1/50	U
36"-144"	208-230/3/60	G
36"-144"	460/3/60	H
36"-144"	575/3/60	I

COLOR	CODE
OBSIDIAN BLACK	OB
TITANIUM SILVER	TS
PEARL WHITE	PW
SPARTAN BRONZE	SB
BATTLESHIP GRAY	BG

**MADE WITH PRIDE IN THE U.S.A.**

**STANDARD 2 (STD2) 1/2 HP UNHEATED MODELS**