

JET-TECH SYSTEMS

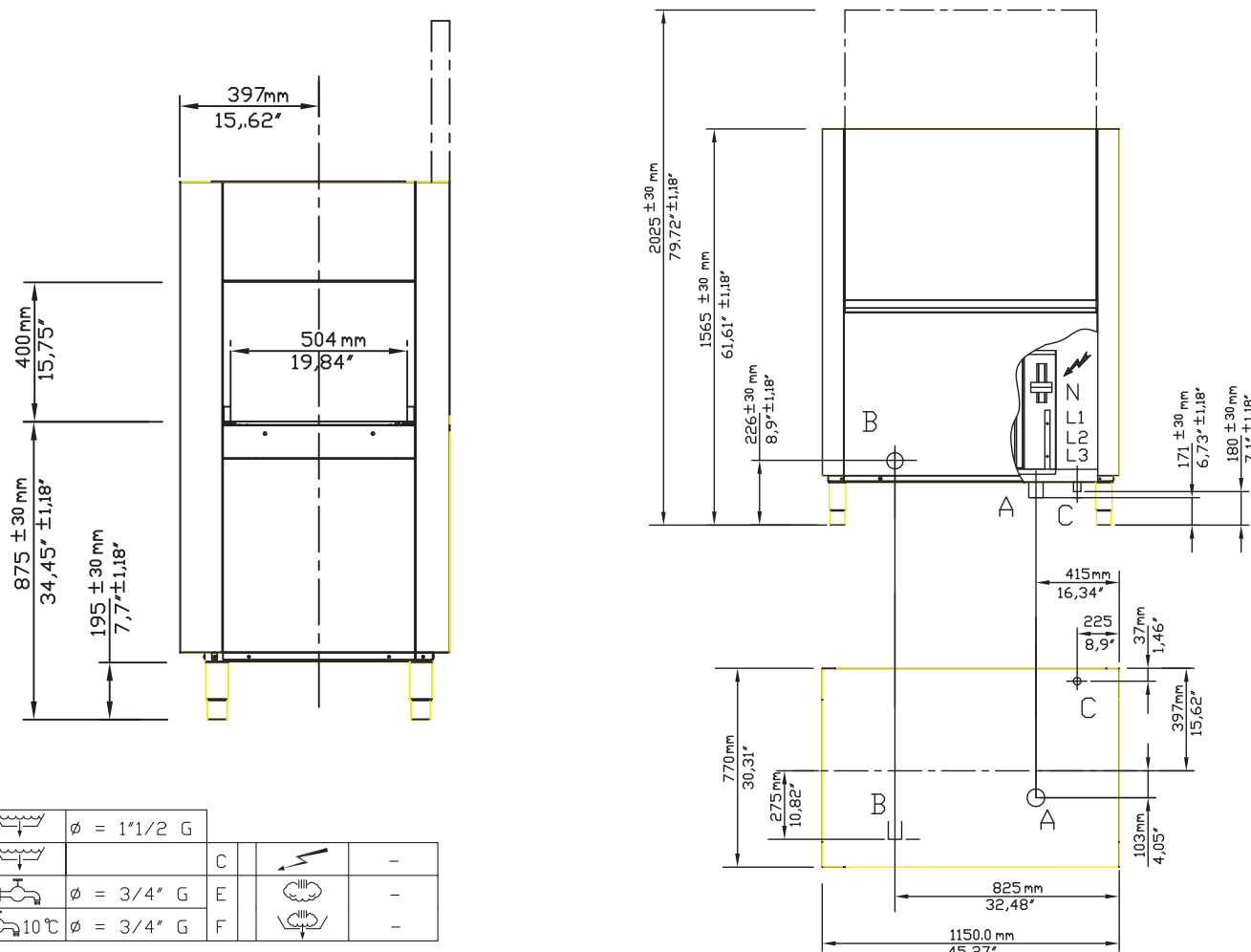
FX 44

| WASHING PROGRAM | | ELECTRIC | | SOFTWARE SYSTEMS | |
|-------------------------------|-------------------------------|----------------------------|---|---|--|
| Rack Dimension | 20" x 20" (500 mm x 500 mm) | Motor | 2 H.P. | Quick ready | |
| Program speed 1 | 150 racks/hour | Voltage | 208V 3 phase 60 hz. | Temporized washing | |
| Program speed 2 | 210 racks/hour | Booster | 3 x 8000 W (incl. 1 element exchanger with tank) | Rinsing economizer | |
| TEMPERATURE | | | | Hours counter (partial and total) | |
| Washing temperature - tank | 165°F 74°C | Tank | 9800W | Water exchange signalation | |
| Rinsing temperature - booster | 190°F 88°C | Rack conveyor motor | 220W | Thermostop | |
| WATER | | | | STANDARD | |
| Wash tank capacity | 18.25 gal (68 litres) | Wash pump | 1500W | Double walled insulated body | |
| Booster capacity | 4.5 gal (17 litres) | Rinse pressure pump | 250W | Rinsing pump | |
| Maximum consumption | 89.81 gal/h (340 litres/hour) | Total load | 28000W | Autodrain wash pump | |
| Water inlet temp. | 122°F (50°C) | Min. Amperage power supply | 90A | Double filter drain system | |
| Fill pressure | 18-40 lbs (1-3 bar) | Net weight | 1012 lb (459kg) | Conveyor direction is reversible in the field | |
| Fill hose connection | G 3/4" M | Ship weight | 1210 lb (550kg) | OPTIONAL EQUIPMENT | |
| Drain hose diameter | 1.5" (38 mm) | Ship width | 74-7/16" (1890 mm) | Detergent level control | |
| | | Ship depth | 40-15/16" (1040 mm) | Steam exhaust or dryer module | |
| | | Ship height | 81-1/8" (2060 mm) | Rinse aid and detergent dispensers | |
| | | Ship volume | 143 cu.ft (4.05 m³) | | |
| | | Noise level | <70 dBA | | |



FX 44

44" SINGLE TANK CONVEYOR DISHWASHER
with built-in booster



THE ABSOLUTE HIGHEST INNOVATION IN WARE WASHING

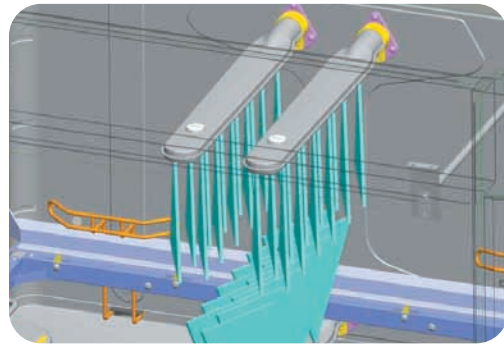
The operators of this equipment have at their disposal a most versatile and innovative instrument; capable of delivering immediate results to your operation. It is now possible to obtain increased performance, remarkable savings in operation costs, as well as a reduced environmental impact. The Jet-Tech FX 44 conveyor dishwasher performance stands on three main pillars:

- Hydrowash
- Total Clean Concept
- Integrated Electronic Control System

These three pillars are the result of our care for the most useful innovation in your kitchen, and that's the reason we can assist users in their everyday work and habits. Versatile and powerful, the FX 44 is capable of washing up to a maximum of 2,350 dishes/hour. Low consumption and power requirements, with a selectable double speed, it is a highly productive instrument. Make this the ideal solution to combat those tough everyday workloads.



MVP GROUP CORPORATION
5659 Royalmount Ave. Montreal QC, Canada H4P 2P9
Tel: 514.737.9701 / 888.275.4538
Fax: 514.342.3854 / 877.453.8832
sales@mvpgroupcorp.com www.mvpgroupcorp.com



Hydrowash

Hydrowash is our patented washing system that we have developed to obtain more with less effort. In the traditional rack conveyor most of the energy generated by washing pumps is wasted in the collisions between the water jets. FX 44 with Hydrowash design, effectively minimizes overlapping between the water blades; in this way the energy that the pump impresses on the water is directed to the wares to be washed.



Hydrowash arm



The effective surface filter

Total Clean Concept

The FX 44 dishwashers were projected to guarantee the maximum cleanliness, easiness and a total seal of hygiene. All the tanks are deep-drawn without welds to make the dirt slide to the drain. The water is treated by large surface integrated filters that retain the biggest dirt particles; conveying them in easily removable containers. Pumps are self-draining to avoid any foul odors. The washing chamber is without manifolds or sharp edges. There are no places where dirt can accumulate. The ordinary maintenance operations at the end of the shift are greatly reduced.



Powered pre-washing

The powered pre-washing module has a length of 32" (820 mm) and makes use of the extraordinary performance of the 36 jets and its patented Hydrowash Washing System. The tank is deep-drawn and can be easily cleaned, the surface filters are very effective in retaining dirt, while a second extractable filter is provided on the pump's suction duct. An effective thermostatic system keeps the water's temperature constant, activating, if required, an integrated heating element in the tank.



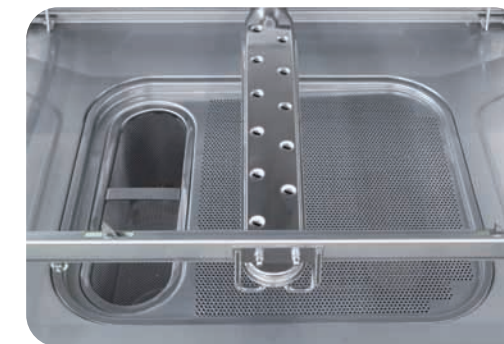
Deep drawn inner tank - the ultimate in sanitation



Low voltage soft touch control panel

Control System

FX 44 rack conveyor is equipped with an ultra modern electronic control panel. The operation is simple and intuitive, the LED displays permit you to visualize the washing and rinsing temperatures as required by HACCP standards. A special push button permits selection of the most suitable operation, continuous or single rack. The panel displays the self-diagnostic circuit messages that monitor the main electric components showing specific error messages at every malfunction.



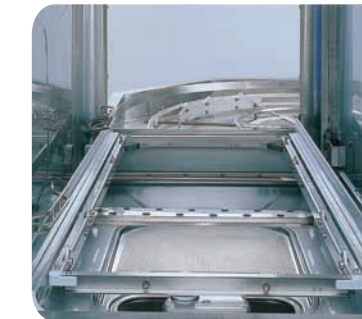
Tank Bottom



The prewash surface strainers



No sharp edges inside



Inner view



Integral double walled structure

JET-TECH RACK CONVEYOR MACHINE

| FEATURE | DESCRIPTION | ADVANTAGE |
|--|---|--|
| Quick Ready | Filling of tank with hot water from booster | Machine ready within shorter time |
| Rinsing Economizer | When last basket exits, rinse pumps stops, while conveyor and wash pump continue to operate | Minimizes rinse water consumption |
| Temporized Washing | Autotimer - enables to wash 1 basket at a time- when basket exits, rinse will stop as per rinsing economizer. Machine will continue to run for few more seconds then conveyor and wash pump stop completely | Less operating cost when low output is required |
| Hours Counter Partial And Total | Connected to autotimer, indicates on display working hours of the day and cumulative operating hours to the date | Informs about actual machine usage |
| Water Change Indication | Indicates when tank water has not been changed for 8 hours or more | Wash water quality control |
| Thermostop | If correct rinse temperature (176°F.-184°F) has not been reached, conveyor is stopped and kept on hold | Constant rinse temperature always ensured |
| Double Skin Insulated Body | Door is double skin with insulation; body is double skin, but not insulated | Less noise and less heat dispersion |
| Rinse Booster Pump | In connection with break tank ensures constant water pressure and output | Optimum rinse quality |
| Autodraining Wash Pump | Vertical pump self drains dirty water remaining inside; pumps mounted in an horizontal position do not drain | Reduces foul odors from machine |
| Double Filter Drain System | Total tank filter plus pump filter ensure better quality of wash water and longer interval between one water change and the other | Better quality of wash water |
| Conveyor Direct Is Reversible In The Field | Easy change of direction; all necessary parts are already equipped on the machine; see instructions | Less inventory for dealer; easy change in case of mistaken order; easy conversion in case of re-sale in future |