

NEW AGE
INDUSTRIAL
NEW AGE



JOB:
ITEM:
QTY:



Mobile Security Cabinet

SPECIFICATIONS

MATERIAL: Hi-tensile, corrosion resistant, rust proof, primary extruded aluminum, Type 6463-T5 alloy and 5052 H32-34 sheet aluminum.

CONSTRUCTION: All heli-arc welded.

SHELVES: Unit equipped with three solid shelves that are constructed out of .080" aluminum sheet adjustable on 2" centers.

BASE: 1/8" Sheet base, reinforced with 1-1/4" x 1-1/2" x .070" wall tube; 4 x 4 1/2" x 3/8" thick pre-tapped caster plates are welded to the base.

DOORS & SIDES: Constructed of 1/8" Sheet, Door is reinforced with tube. Doors have lockable latch to increase security.

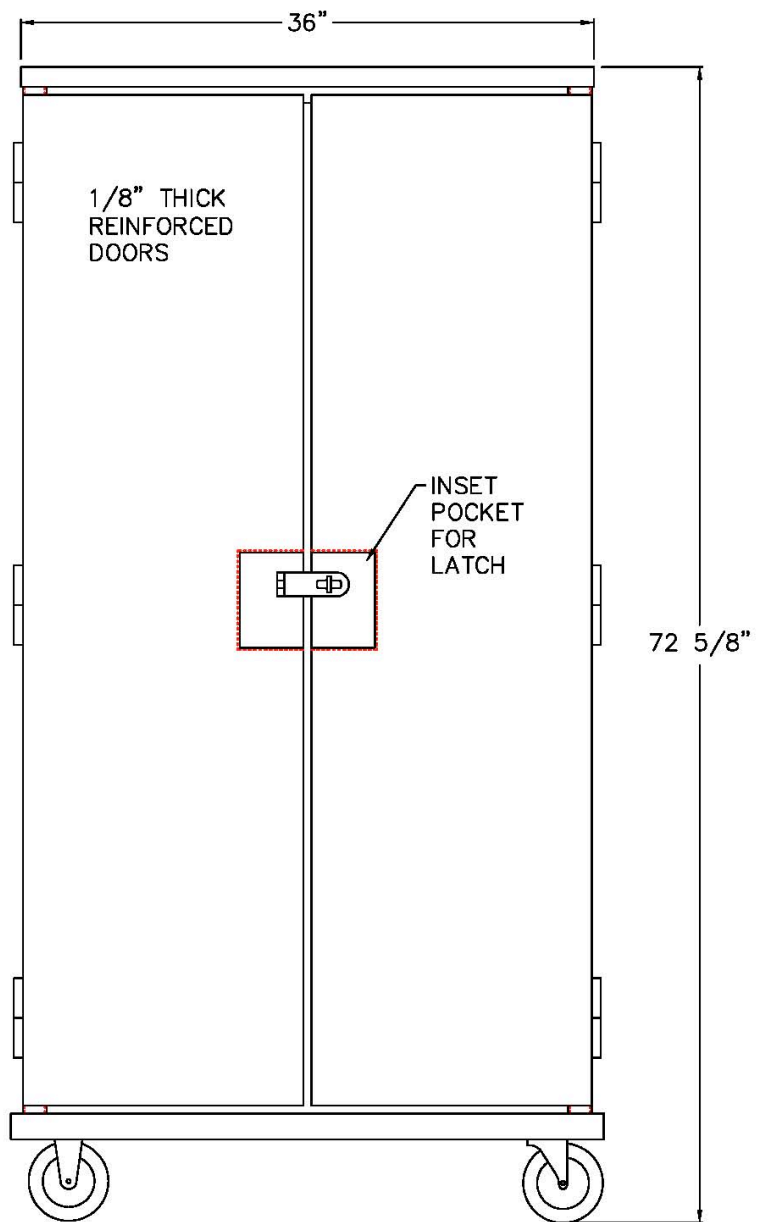
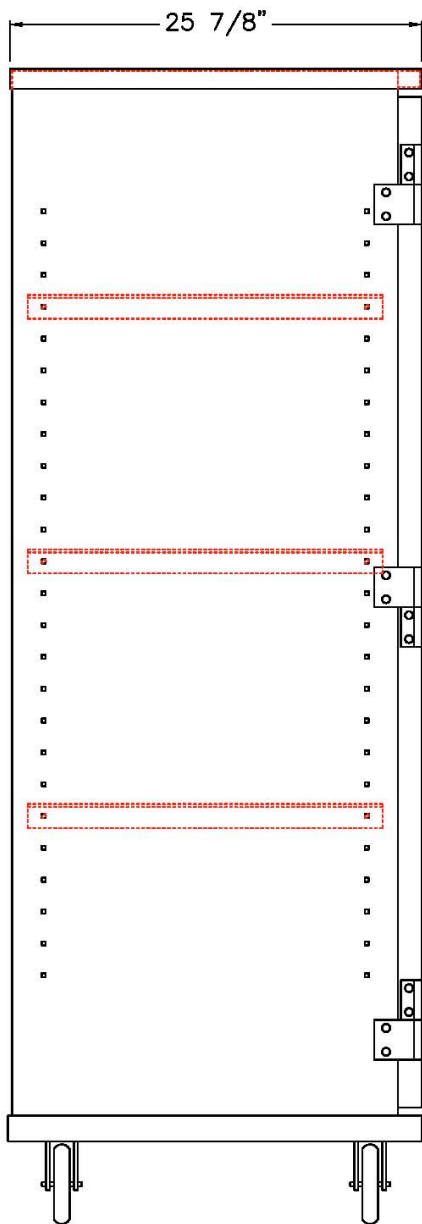
CASTERS: Four 5" diameter casters, 2" wide with polyurethane tire; two swivel and two rigid.



NEW AGE
INDUSTRIAL
NEW AGE

Phone: 800-255-0104
Fax: 877-877-7687
www.newageindustrial.com
sales@newageindustrial.com

New Age Industrial reserves the right to modify or make changes at any time without notice to materials and specifications.



MODEL #99551

Model No.	Size-W	Size-H	Size-D
99551	36"	72 5/8"	25 7/8"



Phone: 800-255-0104
 Fax: 877-877-7687
www.newageindustrial.com
sales@newageindustrial.com

New Age Industrial reserves the right to modify or make changes at any time without notice to materials and specifications.