

NOR-LAKE, INCORPORATED  
727 Second Street  
P.O. Box 248  
Hudson, Wisconsin 54016

800-955-5253  
715-386-2323  
866-961-5253 Parts  
800-388-5253 Service  
715-386-4291 FAX  
www.norlake.com



# MILK COOLER STORAGE



GR422

PROJECT: .....  
ITEM NUMBER: .....  
MODEL NUMBER: .....

MILK COOLER STORAGE

## SPECIFICATIONS FOR: GR422

- Exterior finish:** Exterior front, back, sides, top and doors are white baked on enamel. All exterior joints and seams fold in without lap joints. No exposed raw edges.
- Interior finish:** The interior liner and door panel are 22 gauge galvanized steel.
- Insulation:** The cabinet shell is insulated with 2-1/2 inches of fiberglass. The doors are foamed-in-place with polyurethane insulation.
- Hardware:** Heavy duty, edge mounted pivot hinges, chrome plated pull handles with key locks and self adjusting magnetic gaskets. Six 4" casters.
- Electrical:** Top mounted air cooled condensing unit and interior mounted evaporator are standard. The evaporator is copper tube, aluminum fin. Refrigerant flow is controlled by a thermostatic expansion valve increasing the ability of the refrigerator to meet varying load conditions. 1/4 HP condensing unit. Operating temperature: 38°F.
- Instrumentation:** 115/60/1. Cord and plug furnished.
- Refrigeration:** Holds 28 cases of milk. 42 cubic feet of storage in only 15 square feet of floor space.
- Approvals:** UL, C-UL and UL Sanitation listed \*\*

## STANDARD FEATURES

- Air cooled condensing unit
- Automatic defrost
- Exterior doors (2)
- Galvanized steel interior
- Hanging thermometer
- Key locks
- Interior shelving
- Magnetic gasketing
- Operating temperature: 38°F
- Power cord and plug furnished
- Stocked for same day shipment
- White baked on enamel exterior
- Six 4" casters
- UL, C-UL & UL Sanitation listed
- Warranties: 3 year parts/labor, 5 year compressor

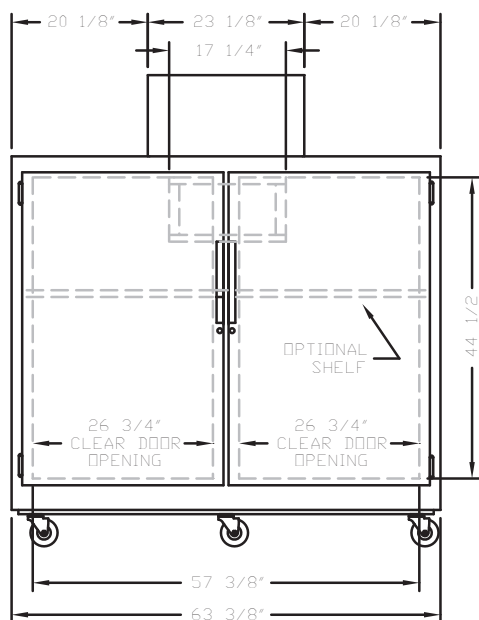
## OPTIONAL FEATURES\*

- Condensate vaporizer with drain line kit
- Legs

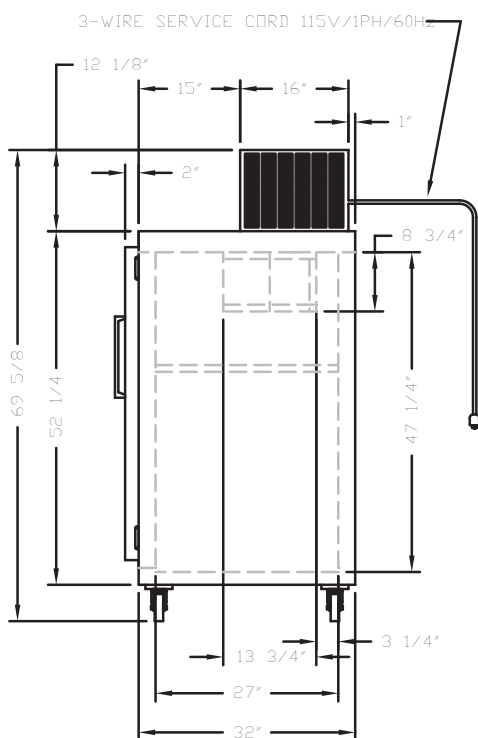


Nor-Lake, Inc.  
Registered to ISO 9001:2008  
File No. 10001816

\*Most options are available one week from receipt of order. Please contact us for specific questions.  
\*\*C-UL is Underwriters Laboratories Safety Certification Mark which indicates that UL has tested the equipment to applicable CSA Standards.  
\*\*UL Sanitation is Underwriters Laboratories Sanitation Mark which indicates that UL has tested the equipment to applicable NSF Standards.



**GR422  
FRONT VIEW**



**GR422  
SIDE VIEW**

## SPECIFICATIONS

### GR422

Crated Height	70"
Crated Width	69-1/2"
Crated Depth	39-1/2"
Crated Weight (lbs)	597
Interior Height (in)	47-1/4"
Interior Width (in)	57-3/8"
Interior Depth (in)	27"
Overall Height (in)	64-7/8"
Overall Width (in)	63-3/8"
Overall Depth (in)	34"
Gross Cubage (ft. <sup>3</sup> )	42
Compressor Size	1/4
Number of Casters	6
Condensing Unit Size	1/2 HP
Refrigerant	R-134a
Electrical Characteristics	115/60/1
Cord & Plug Furnished*	Yes
NEMA Plug Configuration	5-15P
Total Amp Draw	6.4

Specifications subject to change without notice.



**NORLAKE**<sup>®</sup>

Revision Date: 03/13  
© 2013 NOR-LAKE, INC.  
Printed in the U.S.A.  
Part Number: 089718