



NOVA™ GLASS DOOR REFRIGERATORS



NR522

PROJECT:

ITEM NUMBER:

MODEL NUMBER:

1, 2 & 3 DOOR DISPLAY REFRIGERATORS

SPECIFICATIONS FOR: NR241SSG/0, NR522SSG/0 & NR803SSG/0

- **Exterior Finish:** Exterior front and sides are stainless steel. The exterior top, bottom and back are galvanized steel. All exterior joints and seams fold in without lap joints. No exposed raw edges.
- **Interior Finish:** Interior liner is stainless steel.
- **Insulation:** The complete cabinet is foamed-in-place with polyurethane insulation.
- **Hardware:** Heavy duty, pivot hinges with hold open devices; key locks; pull handles; self adjusting magnetic gaskets; 4" dia. casters (4 on one and two door models, 6 on three door models, with 2 locking) and three epoxy coated shelves per door section - standard
- **Glass Doors:** Each glass door provides 9.6 square feet of clear glass viewing space. Glass is tempered thermopane.
- **Electrical:** All models are standard with interior LED lighting activated by a manual switch.
- **Instrumentation:** Microprocessor control with integrated digital display.
- **Refrigeration:** Top mounted refrigeration system. A copper tube, aluminum fin evaporator. The condensate is collected and automatically evaporated from a hot gas vaporizer. Refrigerant flow is controlled by a capillary tube. R-134a refrigerant. Operating temperature: +38°F.
- **Approvals:** UL, C-UL and UL Sanitation listed**
DOE (Department of Energy) listed

STANDARD FEATURES

- Air-cooled condensing unit
- Automatic condensate evaporator
- Automatic defrost
- Capillary tube system
- Casters
- Digital thermometer
- Epoxy coated shelves
- Key locks
- LED lighting
- Magnetic gasketing
- Operating temperature: +38°F
- Polyurethane insulation
- Stainless steel interior and exterior
- Tempered glass
- Approvals: UL, C-UL & UL Sanitation** and DOE listed
- Warranties: 3 year parts and labor, 5 year compressor

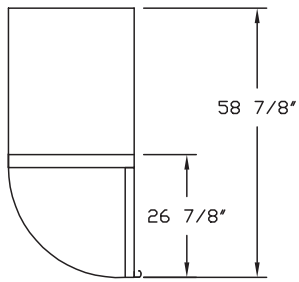
OPTIONAL FEATURES*

- Alarm systems
- Expansion valve system
- Extra shelves
- Full door pan slides
- Half door pan slides
- Half glass doors
- Legs in lieu of casters
- Stainless steel backs
- Stainless steel shelves
- Temperature recorder

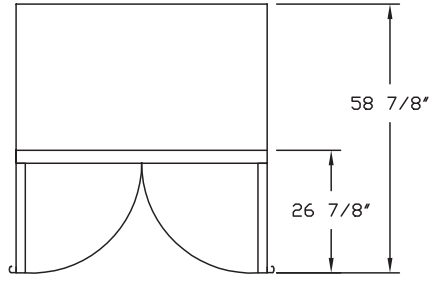


Nor-Lake, Inc.
 Registered to ISO 9001:2008
 File No. 10001816

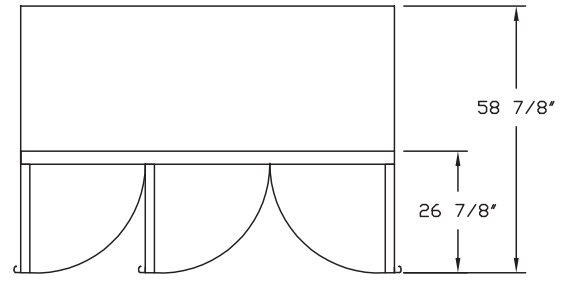
* Most options are available two weeks from receipt of order. Please contact us for specific questions.
 **C-UL is Underwriters Laboratories Safety Certification Mark which indicates that UL has tested the equipment to applicable CSA Standards
 **UL Sanitation is Underwriters Laboratories Sanitation Mark which indicates that UL has tested the equipment to applicable NSF Standards.



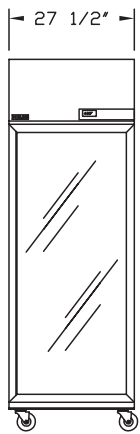
**NR241
TOP VIEW**



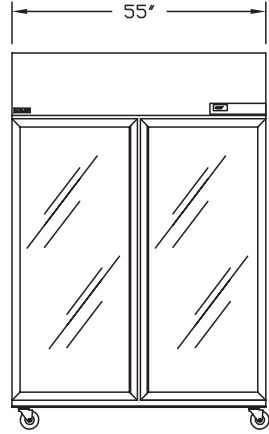
**NR522
TOP VIEW**



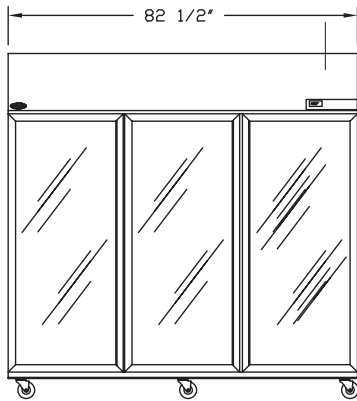
**NR803
TOP VIEW**



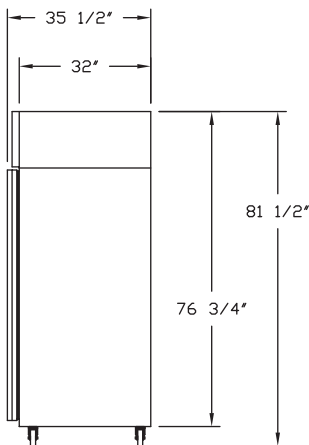
**NR241
FRONT VIEW**



**NR522
FRONT VIEW**



**NR803
FRONT VIEW**



SIDE VIEW

SPECIFICATIONS

| Models | NR241 | NR522 | NR803 |
|-----------------------------------|--------------|--------------|--------------|
| <i>Crated Weight (lbs) (kg)</i> | 365 (164) | 545 (245) | 750 (338) |
| <i>Crated Height (in) (cm)</i> | 81 (203) | 81 (203) | 81 (203) |
| <i>Crated Width (in) (cm)</i> | 31 (78) | 59 (148) | 86 (215) |
| <i>Crated Depth (in) (cm)</i> | 38 (95) | 38 (95) | 38 (95) |
| <i>Interior Height (in) (cm)</i> | 59 (148) | 59 (148) | 59 (148) |
| <i>Interior Width (in) (cm)</i> | 23-1/2 (59) | 51 (128) | 78-1/2 (196) |
| <i>Interior Depth (in) (cm)</i> | 30 (75) | 30 (75) | 30 (75) |
| <i>Overall Height (in) (cm) *</i> | 81-1/2 (204) | 81-1/2 (204) | 81-1/2 (204) |
| <i>Overall Width (in) (cm)</i> | 27-1/2 (69) | 55 (138) | 82-1/2 (206) |
| <i>Overall Depth (in) (cm)</i> | 35-1/2 (88) | 35-1/2 (88) | 35-1/2 (88) |
| <i>Gross Cubage (CuFt) (L)</i> | 24.0 (679) | 52.0 (1472) | 80.0 (2264) |
| <i>Shelf Area (SqFt) (Sqm)</i> | 12.8 (1.17) | 28.6 (2.63) | 42.9 (3.94) |
| <i>Glass Area (SqFt) (Sqm)</i> | 9.6 (.88) | 19.3 (1.78) | 28.9 (2.66) |
| <i>Number of Shelves</i> | 3 | 6 | 9 |
| <i>Number of Casters</i> | 4 | 4 | 6 |
| <i>Number of Legs (Optional)</i> | 4 | 4 | 6 |
| <i>Condensing Unit Size</i> | 1/4 HP | 1/3 HP | 1/2 HP |
| <i>Refrigerant</i> | R-134a | R-134a | R-134a |
| <i>Electrical Characteristics</i> | 115/60/1 | 115/60/1 | 115/60/1 |
| <i>Cord & Plug Furnished</i> | Yes | Yes | Yes |
| <i>NEMA Plug Configuration</i> | 5-15P | 5-15P | 5-15P |
| <i>Total Amp Draw</i> | 4.9 | 8.0 | 9.1 |

* The overall heights shown in the table and drawings are with casters. With optional 6' legs, the overall height is 82-3/4 inches (207 cm).

Specifications subject to change without notice.



Revision Date: 08/13
© 2013 NOR-LAKE, INC.
Printed in the U.S.A.
Part Number: 040344