



NOVA™ ROLL-THRU REFRIGERATORS

ROLL-THRU REFRIGERATORS



PROJECT:

ITEM NUMBER:

MODEL NUMBER:

SPECIFICATIONS FOR: PWR332 & PWR724

- **Exterior finish:** Exterior front, sides and doors are stainless steel. The exterior top, bottom and back are galvanized steel. All exterior joints and seams fold in without lap joints. No exposed raw edges.
- **Interior finish:** Interior liner and interior door panel are stainless steel.
- **Insulation:** The complete cabinet and door(s) are foamed-in-place with polyurethane insulation.
- **Hardware:** Heavy duty, pivot hinges; centered key locks; horizontal work flow pull handles; self adjusting magnetic gaskets.
- **Electrical:** All models are standard with an interior LED light activated by switches for each door.
- **Instrumentation:** Microprocessor with digital display.
- **Refrigeration:** Complete top mounted refrigeration system. A copper tube, aluminum fin evaporator. The condensate is collected and automatically evaporated from an energy efficient hot gas vaporizer. Refrigerant flow is controlled by a capillary tube. R-134a refrigerant. Operating temperature: 38°F.
- **Approvals:** UL listed
 C-UL listed**
 UL Sanitation listed**

STANDARD FEATURES

- Air-cooled condensing unit
- Automatic condensate evaporation
- Automatic defrost
- Capillary tube system
- Horizontal work flow handle
- Key locks
- Magnetic gasketing
- Microprocessor with digital display
- Operating temperature: 38°F.
- Polyurethane insulation
- R-134a refrigerant
- Recessed interior light
- Stainless steel interior
- Stainless steel exterior
- Stocked for same day shipment
- UL, C-UL & UL Sanitation listed**
- Warranties: 12 months parts & labor, 5-year compressor

OPTIONAL FEATURES*

- Alarm systems
- Thermal expansion valve

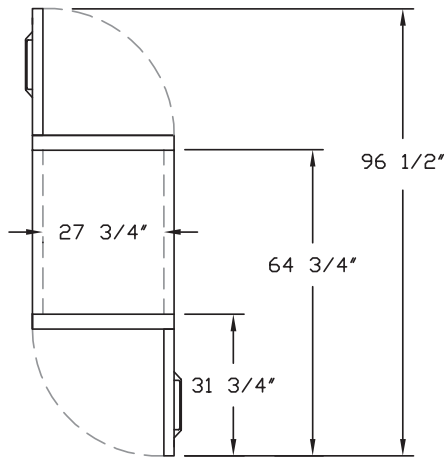


Nor-Lake, Inc.
 Registered to ISO 9001:2008
 File No. 10001816

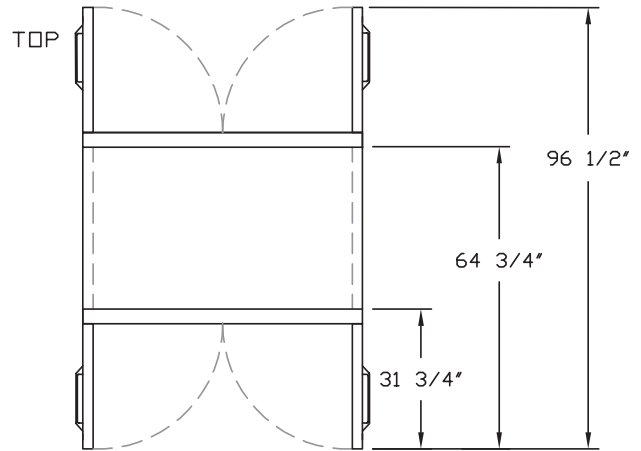
* Most options are available two weeks from receipt of order. Please contact us for specific questions.

** C-UL is Underwriters Laboratories Safety Certification Mark which indicates that UL has tested the equipment to applicable CSA Standards.

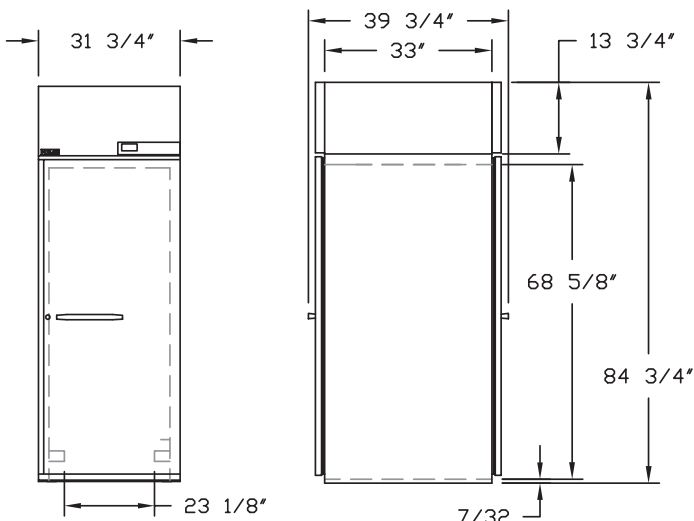
** UL Sanitation is Underwriters Laboratories Sanitation Mark which indicates that UL has tested the equipment to applicable NSF Standards.



PWR332



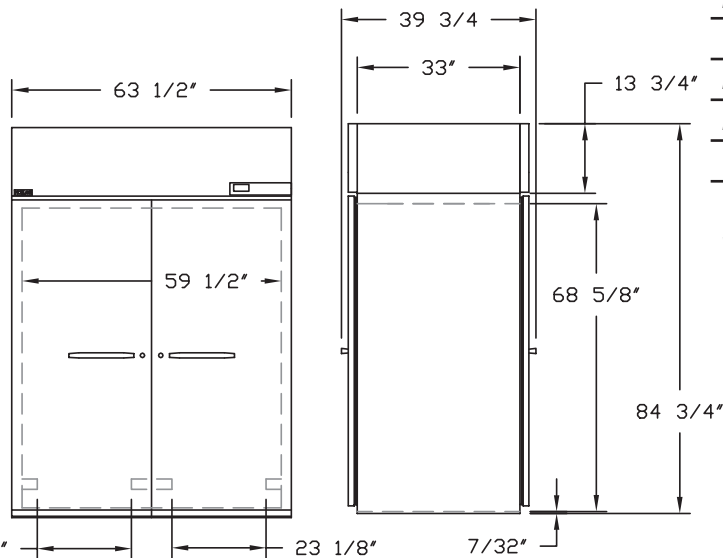
PWR724



FRONT

SIDE

PWR332



FRONT

SIDE

PWR724

SPECIFICATIONS

	PWR332	PWR724
<i>Crated Height</i>	88-1/2"	88-1/2"
<i>Crated Width</i>	35-3/4"	67-1/2"
<i>Crated Depth</i>	44-3/4"	44-3/4"
<i>Crated Weight (lbs)</i>	596	690
<i>Interior Height</i>	68-5/8"	68-5/8"
<i>Interior Width</i>	27-3/4"	59-1/2"
<i>Interior Depth</i>	33"	33"
<i>Overall Height</i>	84-3/4"	84-3/4"
<i>Overall Width</i>	31-3/4"	63-1/2"
<i>Overall Depth</i>	39-3/4"	39-3/4"
<i>Gross Cubage (ft.³)</i>	33	72
<i>Condensing Unit Size</i>	1/3HP	3/4HP
<i>Refrigerant</i>	R-134a	R-134a
<i>Electrical Characteristics</i>	115/60/1	115/60/1
<i>Cord & Plug Furnished</i>	Yes	Yes
<i>Maximum Fuse Size</i>	15	15
<i>NEMA Plug Configuration</i>	5-15P	5-15P
<i>Total Amp Draw</i>	7.7	10.4

Specifications subject to change without notice.



Revision Date: 11/12
 © 2012 NOR-LAKE, INC.
 Printed in the U.S.A.
 Part Number: 139659

