



ICE CREAM TOPPING FREEZER-Dual Rail

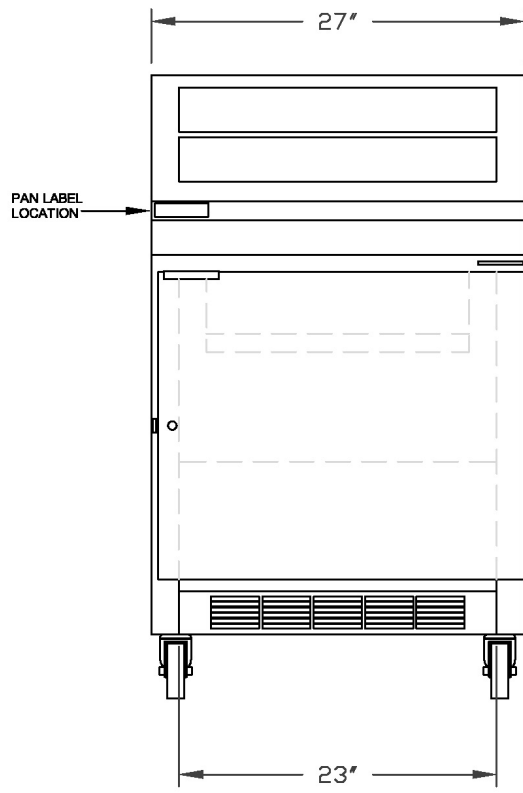
ICE CREAM TOPPING FREEZER



PROJECT:

ITEM NUMBER:

MODEL NUMBER:



Front View

SPECIFICATIONS	
ZF081	
Crated Height	50"
Crated Width	32-3/4"
Crated Depth	39-1/2"
Crated Weight (lbs)	300
Interior Height	22-7/8"
Interior Width	23"
Interior Depth	29-1/2"
Overall Height*	45-1/8"
Overall Width	27"
Overall Depth	34-3/4"
Gross Cubage (ft. ³)	7
Number of Shelves	1
Number of Legs	4 Optional
Number of Casters	4
Compressor Size	1/2 HP
Refrigerant	R-404A
Electrical Characteristics	115/60/1
Cord & Plug Furnished	Yes
NEMA Plug	5-15P
Total Amp Draw	8.1

Specifications subject to change without notice.

*The overall height shown is with casters. With legs, the overall height is 46-1/2".

SPECIFICATIONS FOR: ZF081SMS/0-2

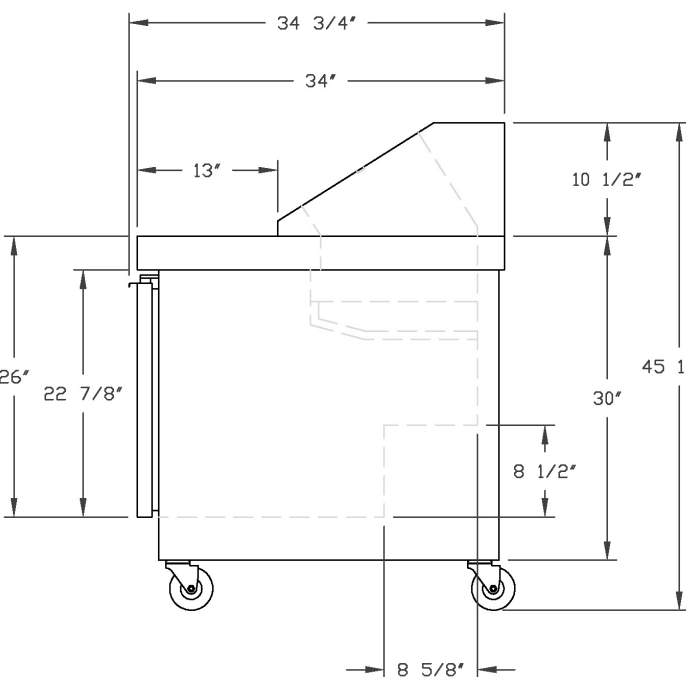
- Exterior finish:** Exterior front, sides, door and top are stainless steel. Syrup rail is stainless steel. The exterior back and bottom are galvanized steel.
- Interior finish:** Interior liner and interior pan wells are smooth aluminum. All corners, vertical and horizontal, are covered with 1/4" radius.
- Dual Syrup Rail:** Dual syrup rail will hold 8 syrup or fruit wells. 8 syrup or fruit wells with 7 covers, spoons and 1 pump are available as an option. Syrup rail is stainless steel.
- Insulation:** Cabinet is foamed-in-place with polyurethane insulation.
- Hardware:** Freezer includes one adjustable wire shelf within the storage compartment. Pull door handle. Key locking door.
- Refrigeration:** Base mount refrigeration. System utilizes R-404A refrigerant. Complete with automatic, hot gas condensate evaporator. Self contained refrigeration system. Topping cabinet may be built in on 3 sides. Air intake and exhaust is through the base in front of the unit. Operating temperature: -10°F base, refrigerated pan well.
- Electrical:** 115 volt, 60 Hz, 1 phase.
- Approvals:** UL listed.
C-UL listed.**
UL Sanitation listed.**

STANDARD FEATURES

- Air-cooled condensing unit
- Casters
- Convection cooling - pan well
- Forced air evaporator - storage area
- Key locking door
- Operating temperature: -10°F
- Refrigerated pan well
- Polyurethane insulation
- Power cord and plug furnished
- Rigid base

OPTIONAL FEATURES*

- Legs in lieu of casters
- Stainless steel interior
- Stainless steel shelf extension
- 8 syrup or fruit wells with 7 covers and spoons, 1 pump
- 220/50/1 electrical for export
- Warranties: 5 year compressor



Side View



Revision Date: 12/05
© 2005 NOR-LAKE, INC.
Printed in the U.S.A.
Part Number: 101646



Nor-Lake, Inc.
Registered to ISO 9001:2000
Certificate No. A3204

* Most options are available two weeks from receipt of order. Please contact us for specific questions.

**C-UL is Underwriters Laboratories Safety Certification Mark which indicates that UL has tested the equipment to applicable CSA Standards.

**UL Sanitation is Underwriters Laboratories Sanitation Mark which indicates that UL has tested the equipment to applicable NSF Standards.