

# SINGLE DOOR FREEZER

## 24" ADA-COMPLIANT SERIES

### Perlick Features

- 32" height (including leveling legs) to meet ADA-compliant requirements
- Best in Class 700 Btu commercial-grade compressor
- Front-vented RAPIDcool forced-air refrigeration system
- Equipped with automatic hot gas defrost for maintenance-free defrosting
- Commercial-grade stainless steel interior
- Industry Exclusive black vinyl-coated, full-extension pull-out shelves
- Stainless steel ball bearing glides provide smooth shelf movement
- Convertible door design allows for all doors to be converted to wood overlay from stainless steel (*note: wood overlay done by customers millworker*)
- Fully-integrated depth allows for flush fit with surrounding cabinetry
- Multiple door styles (including Industry Exclusive drawer models) and finishes available
- Also available in ADA-Compliant Series: Refrigerator, Refrigerator Drawers, Beverage Center, Wine Reserve and 15" Clear Ice Maker

MODELS	
	HA24FB-1L
	HA24FB-1R
	HA24FB-2L
	HA24FB-2R
	HA24FB-5
	HA24FB-6



HA24FB-1R



HA24FB-5

Form No. AD02  
Rev. 08.13.2012



8300 West Good Hope Road • Milwaukee, WI 53223 • Phone 414.353.7060 • Fax 414.353.7069  
Toll Free 800.558.5592 • E-mail perlick@perlick.com • Web www.perlick.com

# SINGLE DOOR FREEZER

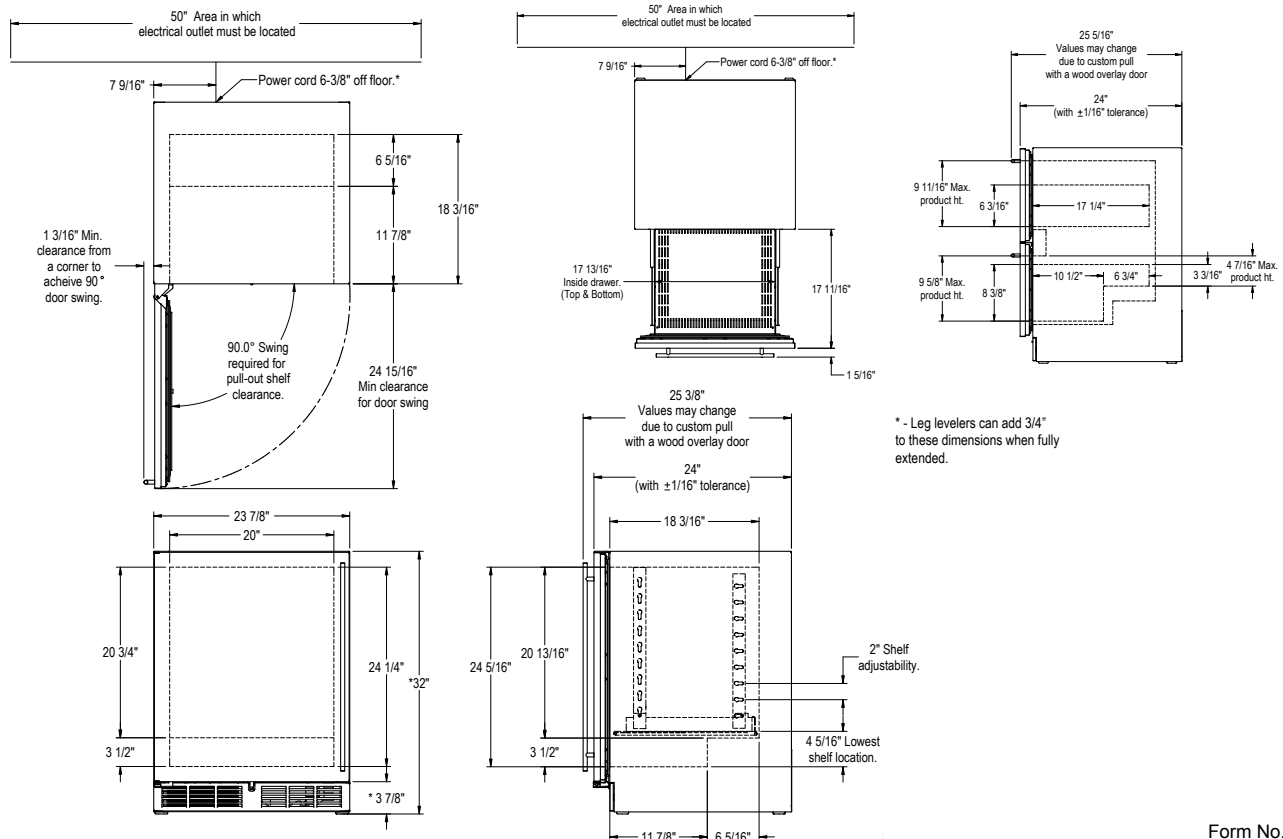
24" ADA-COMPLIANT SERIES



Job \_\_\_\_\_  
 Area \_\_\_\_\_  
 Item No. \_\_\_\_\_  
 Model No. \_\_\_\_\_

<b>MODEL NO.</b>	<b>HA24FB</b>	
<b>CABINET DIMENSIONS</b>	Length Ins. (mm)	23-7/8" (606)
	Depth Ins. (mm)	24" (610)
	Height Ins. (mm)	32" (813)
SHIP WEIGHT LBS. (KG)	196 (88)	
CAPACITY CU. FT. (L.)	4.8 (136)	
SHELVING	2 black vinyl-coated full-extension shelves (adjustable)( <i>drawer models excluded</i> )	
CABINET CONSTRUCTION (INT.)	Interior Stainless Steel	
CABINET CONSTRUCTION (EXT.)	Exterior Sides, Exterior Top Black Vinyl Exterior Back Galvanized Door Exterior Customer Choice (see below under 'Customer Options')	
CABINET INSULATION	Polyurethane-Ecomate. Wall Thickness-2" Door, Drawer Thickness-2" (solid stainless steel only)	
DOORS, HINGING & HARDWARE	Number of Doors 1 ( <i>drawer models excluded</i> ) Opening Style Hinged (Left or Right) Door Style Solid or Drawers Door Swing/Drawer Clearance 25" (635) Locks Available (factory installed)	
CONDENSING UNIT	H.P. 1/6 Condenser Access Front	
REFRIGERATION	Refrigerant R134a Expansion Device Capillary Tube Type	
PLUMBING	None required. Moisture drains to self evaporating condensate pan	
ELECTRICAL	Electrical Supply 115V/60 Hz/1 Phase Running Load Amps 2.3 Cord Connection Cord Connected (3-prong 6' NEMA 5-15P) Thermostat Electro-Mechanical Lighting Type Incandescent	
DEFROST SYSTEM	Automatic hot gas defrost	
TEMPERATURE SETTINGS F°(C°)	Factory Temp. Setting-Freezer 0°(-17.8°) Temp. Range-Freezer -10°- 10°(-23.3°- -12.2°)	
CUSTOMER OPTIONS	Door Finishes Solid Stainless Steel Door (-1), Solid Wood Overlay Door (-2), Stainless Steel Drawers (-5), Wood Overlay Drawers (-6)	
ADDITIONAL ACCESSORIES	Casters 3.75" (Part No. 66736) Legs 4"-6" (Part No. 66734), 6"-7.25" (Part. No 66735)	

**NOTE:** This equipment is intended for the storage and display of non-potentially hazardous bottled or canned products only!



Form No. AD02  
 Rev. 08.13.2012



Perlick is committed to continuous improvement.  
 Therefore, we reserve the right to change specifications without prior notice.

