

# HAND SINK - WALL MOUNTED

---

## MODELS

□ HS17WM



### Perlick Features

- Deep drawn stainless steel bowl
- Quality chrome plated hot/cold water faucet
- Countertop edge with 3/8" No Drip Offset
- Wall mounting bracket included



GENERATIONS OF  
EXCELLENCE

Form No. SK06  
Rev. 07.29.2011



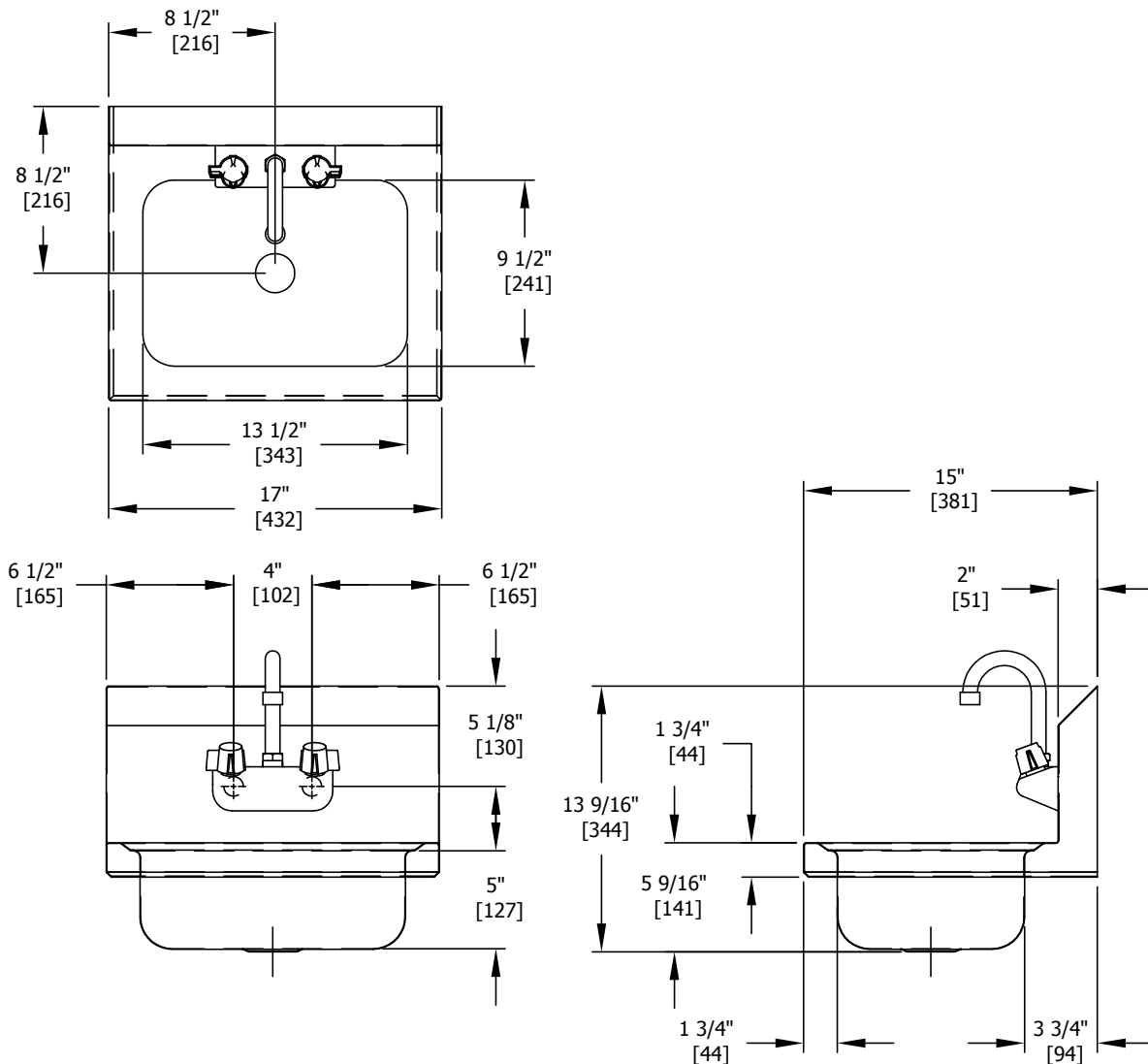
8300 West Good Hope Road • Milwaukee, WI 53223 • Phone 414.353.7060 • Fax 414.353.7069  
Toll Free 800.558.5592 • E-Mail [perlick@perlick.com](mailto:perlick@perlick.com) • [www.perlick.com](http://www.perlick.com)

# Size and Specifications

Hand Sink - Wall Mounted

Job \_\_\_\_\_  
Area \_\_\_\_\_  
Item No. \_\_\_\_\_  
Model No. \_\_\_\_\_

MODEL NO.	HS17WM
LENGTH IN. (mm)	17" (432)
SHIP WEIGHT LB. (kg)	11 (5)
GENERAL	One piece deep drawn stainless steel bowl. No welded seams other than corners. Includes 16" stainless steel wall mounting bracket.
BACKSPLASH	Stainless steel, 8" high with 2" angled return at top
BOWL	13-1/2" x 9-1/2" x 5" deep, All horizontal and vertical edges 2" radius with balled corners, furnished with stainless steel drain socket and basket
WATER FAUCET	Chrome plated, hot and cold, furnished with 3-1/2" gooseneck spout (NSF listed component)
PLUMBING	Supply is 1/2" IPS hot and cold. Drain is 1-1/2" IPS



Form No. SK06  
Rev. 07.29.2011



8300 West Good Hope Road • Milwaukee, WI 53223 • Phone 414.353.7060 • Fax 414.353.7069  
Toll Free 800.558.5592 • E-Mail perlick@perlick.com • www.perlick.com

Perlick is committed to continuous improvement. Therefore, we reserve the right to change specifications without prior notice