

STORAGE CABINET

WITH RINSE TANK AND WASTE CHUTE



MODELS

□ SC18W



Perlick Features

- Conveniently located waste chute
- Deep drawn stainless steel bowl
- NSF listed, commercial grade hot/cold water faucet (must be ordered separately)
- Can be factory assembled to SC12, SC18, SC24 and SC30
- Optional door available (specify left or right hinge)

Form No. SB04
Rev. 09.20.2011



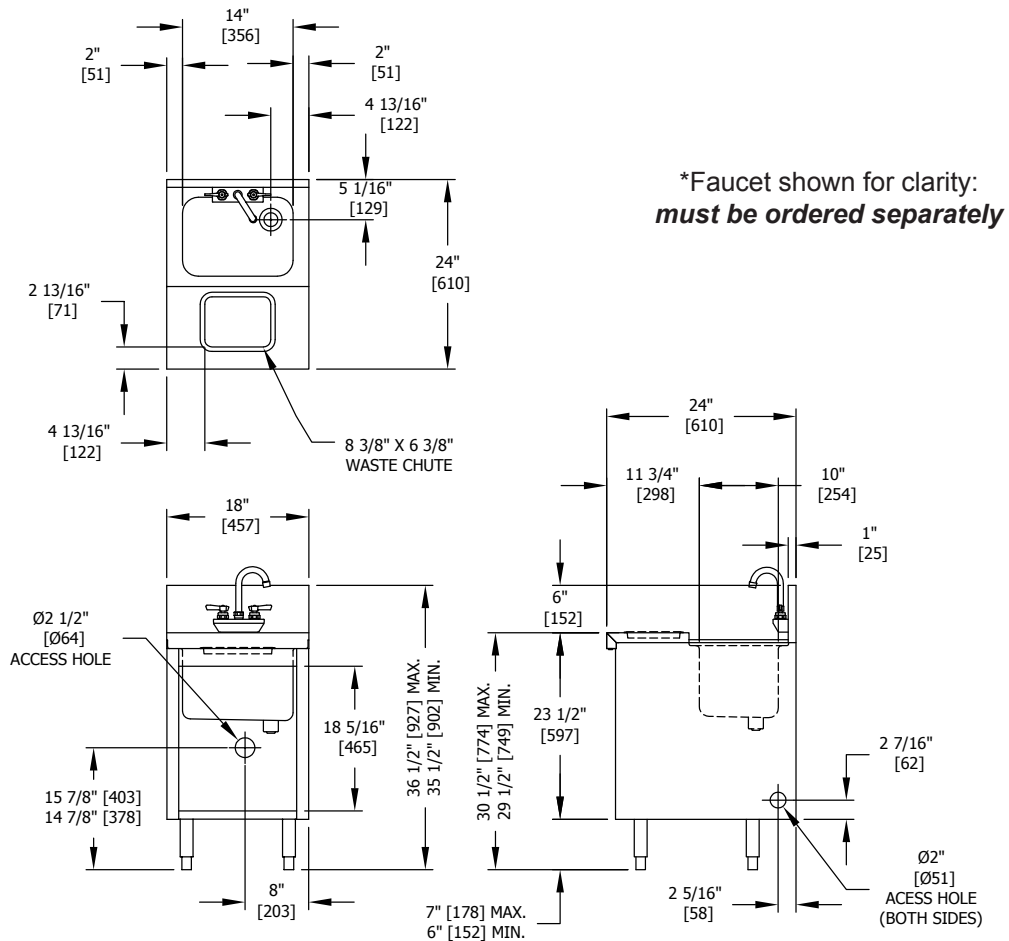
8300 West Good Hope Road • Milwaukee, WI 53223 • Phone 414.353.7060 • Fax 414.353.7069
Toll Free 800.558.5592 • E-Mail perlick@perlick.com • www.perlick.com

Size and Specifications

Storage Cabinet with Rinse Tank and Waste Chute

Job _____
 Area _____
 Item No. _____
 Model No. _____

MODEL NOS.	SC18W
LENGTH IN. (mm)	18" (457)
SHIP WT. lbs. (kg)	50 (23)
GENERAL PARTS	Stainless steel
BACKSPLASH	Stainless steel 6" with 1" return at top, mechanically fastened and sealed with steel support brackets
LEGS	1-5/8" tubular, stainless steel with 1" adjustable stainless steel foot.
BOWL	10" x 14" x 9-1/2" deep. Includes sound deadening. All horizontal and vertical edges 1-1/2" radius with ballbed corners. Furnished with 1-1/2" stainless steel drain socket and 8-1/2" standpipe.
WASTE CHUTE	5" diameter with 5/8" raised rim (optional interior waste container, No. 7055-102).
WATER FAUCET	Chrome plated, hot and cold, goose neck spout, wall mounted faucet. Heavy-duty all brass construction. Must be ordered separately. Lead free faucet also available.
PLUMBING	Drain connection- 1-1/2" NPS Male. Hot and cold water connection: 3/8" copper supply tubes.
DOOR-OPTIONAL	Stainless steel outer and inner door panels (SCDR-18) with left or right hinge and dual magnetic catch. Also available: Wet waste basket (SC-WB), Endsplash (must specify left or right location) (SC-ES)



Form No. SB04
 Rev. 09.20.2011



8300 West Good Hope Road • Milwaukee, WI 53223 • Phone 414.353.7060 • Fax 414.353.7069
 Toll Free 800.558.5592 • E-Mail perlick@perlick.com • www.perlick.com

Perlick is committed to continuous improvement. Therefore, we reserve the right to change specifications without prior notice