

ONE TANK SINKS – STAINLESS STEEL BOWL

MODELS

TS Series

□ TS12HSN



Perlick Features

- Deep drawn stainless steel bowl
- NSF listed, commercial grade hot/cold water faucet (must be ordered separately)
- 16 oz. pump soap dispenser
- Underside is sound-deadened
- Stainless steel legs install without tools and have "Rust Free" thermoplastic feet



GENERATIONS OF
EXCELLENCE

Form No. SK07
Rev. 04.04.2013

Perlick[®]

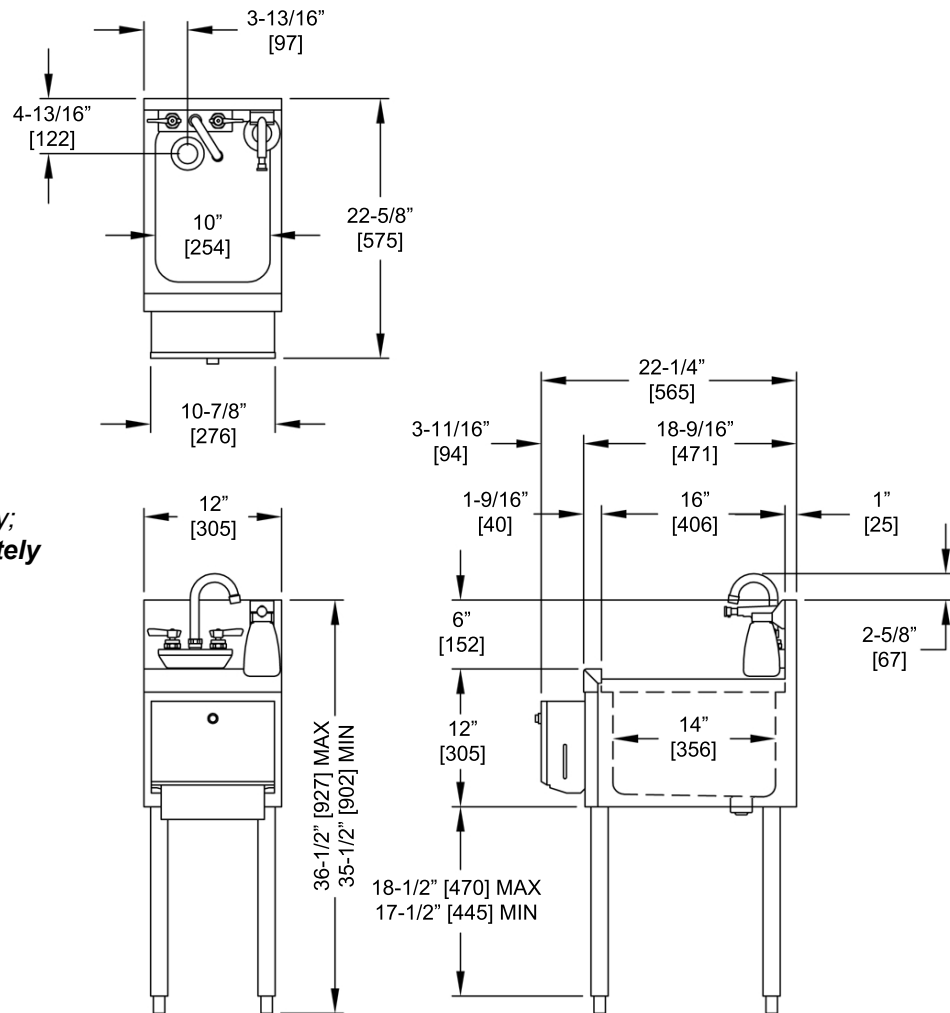
8300 West Good Hope Road • Milwaukee, WI 53223 • Phone 414.353.7060 • Fax 414.353.7069
Toll Free 800.558.5592 • E-Mail perlick@perlick.com • www.perlick.com

Size and Specifications

One Tank Sink – Stainless Steel Bowl

Job _____
 Area _____
 Item No. _____
 Model No. _____

MODEL NO.	TS12HSN
LENGTH IN. (mm)	12" (305)
SHIP WEIGHT LB. (kg)	50 (23)
TOP & SIDES	Stainless steel
BACK & BOTTOM	Stainless steel
BACKSPLASH	Stainless steel 6" high (4" high optional) with 1" return at the top, mechanically fastened and sealed to hand sink top with steel support brackets.
LEGS	1-5/8" tubular, stainless steel with 1" adjustable thermoplastic foot.
BOWL	Stainless steel with sound deadening. 10"x14"x9-1/4" deep. All horizontal and vertical edges 1-1/2" radius with balled corners. Furnished with 1-1/2" stainless steel drain socket. 8-1/2" standpipe.
WATER FAUCET	Chrome plated, hot and cold, goose neck swing spout faucet. Heavy-duty all brass construction. Must be ordered separately. Lead free faucet also available.
PLUMBING	Drain connection: 1-1/2" NPS male. Hot and cold water connection



*Faucet shown for clarity;
 must be ordered separately

Form No. SK07
 Rev. 04.04.2013



8300 West Good Hope Road • Milwaukee, WI 53223 • Phone 414.353.7060 • Fax 414.353.7069
 Toll Free 800.558.5592 • E-Mail perlick@perlick.com • www.perlick.com

Perlick is committed to continuous improvement. Therefore, we reserve the right to change specifications without prior notice