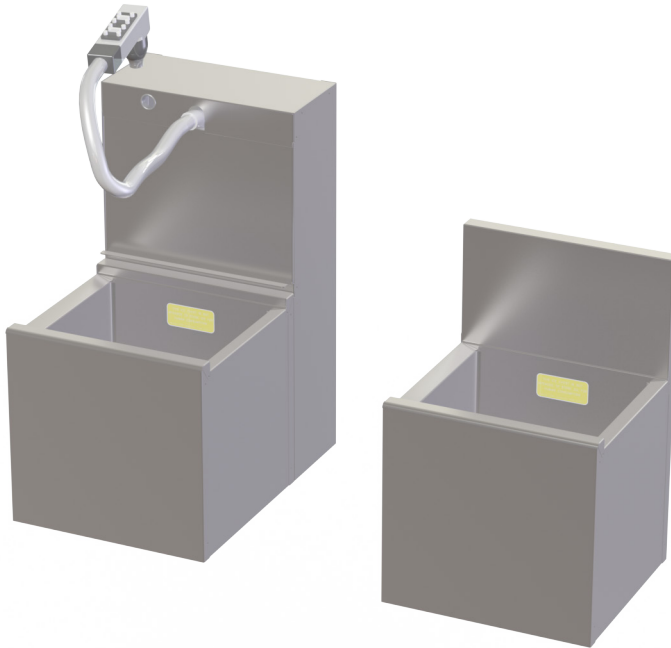




TOBIN ELLIS SIGNATURE COCKTAIL STATION INSULATED BOTTLE WELLS



JOB	
AREA	
ITEM NO.	
MODEL NO.	

MODELS	
TSC Series	TSCE Series
TSC12IBW	TSCE12IBW
TSC12IBW-MH	



Note: Sode gun system not included. Shown for clarity only.

Features

- Available in 17" and 27-1/2" depths
- Quality, all stainless steel construction, smooth inner liner with no exposed joints or seams
- Keeps juice, mix, syrups, wine and beer bottles chilled and at arms reach.
- Model TSC12IBW-MH includes toolless "flip-down" integrated soda manifold housing designed for use with Wunder Bar® and Schroeder America™ 8-14 product soda gun/manifolds.
- Manifold mounts to inside cover for easy access and service. Keeps soda lines out of customers' view.
- Stainless steel legs install without tools and have "Rust-free" thermoplastic feet.



TOBIN ELLIS SIGNATURE COCKTAIL STATION INSULATED BOTTLE WELLS

MODEL NOS.	TSC12IBW	TSC12IBW-MH	TSCE12IBW
LENGTH IN. (mm)	12" (305)	12" (305)	12" (205)
Depth IN. (mm)	17" (432)	17" (432)	27-1/2" (698)
SHIP WT. lbs. (kg)	35 (15.9)	40 (18.1)	55 (25.0)
CONSTRUCTION	All stainless steel construction. Stainless steel interior with 1/4" radius corners, welded and sealed.		
BACKSPLASH	General and TSC and TSCE Series: Stainless steel 6" high (4" high optional) with 1" return at top, mechanically fastened and sealed with steel support brackets. TSD Series: Not applicable		
INSULATION	Foamed-in-place polyurethane		
PLUMBING	Drain Connection: 1/2" NPS		
BOTTLE CAPACITY (3-3/4" dia. bottles)	8	5	14
SODA GUN MANIFOLD	N/A	(Qty. 1) 8-14 button soda gun manifold (not included). Note: gun holder to be mounted to underside of bar top	N/A
LEGS	1-5/8" tubular, stainless steel with 1" adjustable stainless steel foot.		

