

# ICE CREAM CENTER

---

## Perlick Features

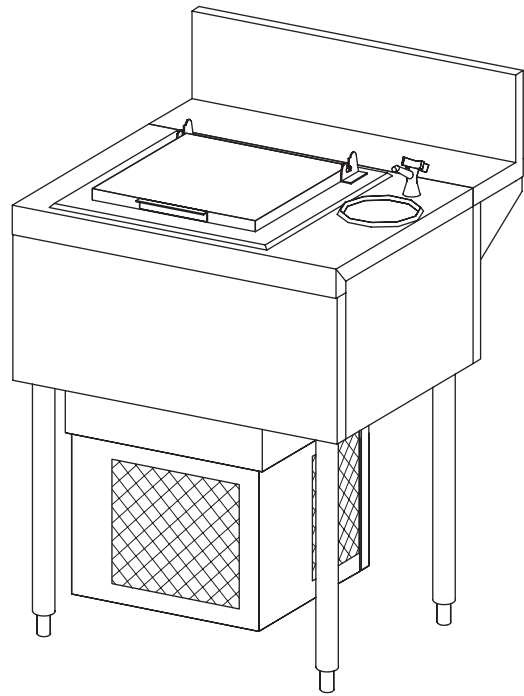
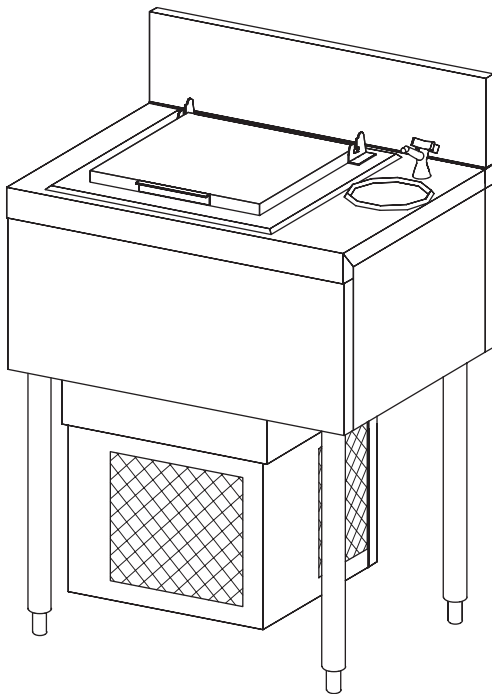
- Refrigerated ice cream unit.
- Convenient disher well and faucet.
- Stainless steel legs install without tools and have “Rust Free” Thermoplastic feet.

## MODEL NOS.

TS Series  
 TS24DC

## MODEL NOS.

TSD Series  
 TSD24DC



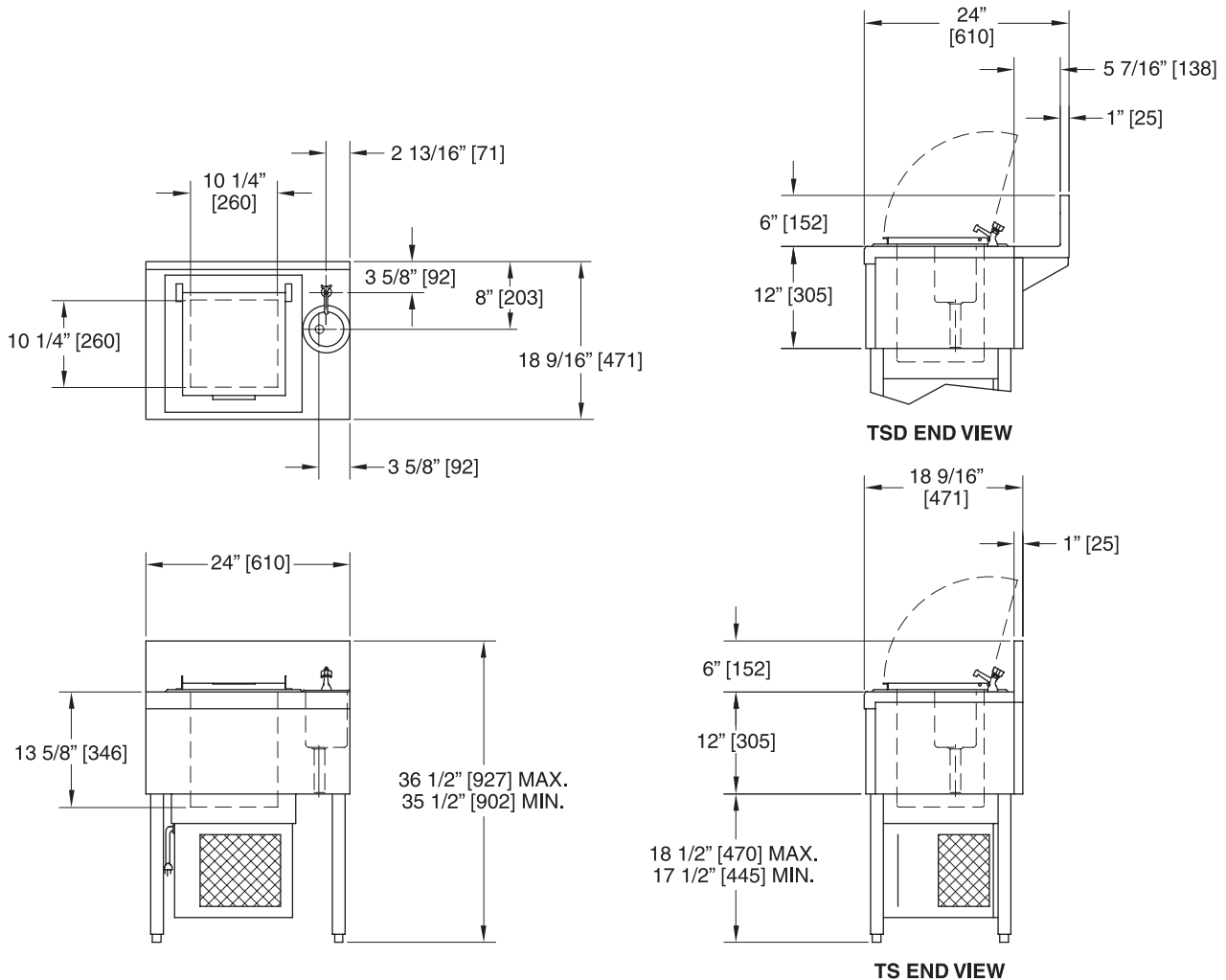
8300 West Good Hope Road • Milwaukee, WI 53223 • Phone 414-353-7060 • Fax 414-353-7069  
Toll Free 800-558-5592 • E-Mail: [Perlick@Perlick.com](mailto:Perlick@Perlick.com) • [www.Perlick.com](http://www.Perlick.com)

Form No. DC01  
Rev. 07.03.07

# Sizes and Specifications Ice Cream Center

Job \_\_\_\_\_  
 Area \_\_\_\_\_  
 Item No. \_\_\_\_\_  
 Model No. \_\_\_\_\_

MODEL NOS.	TS(D)24DC
LENGTH INS. (mm)	24" (610)
SHIP WT lbs. (kg)	199 (90)
TOP, FRONT & SIDES	Stainless steel.
BACK & BOTTOM	Galvanized steel.
BACKSPLASH	<b>TS Series:</b> Stainless steel 6" high (4" high optional) with 1" return at top, mechanically fastened and sealed with steel support brackets. <b>TSD Series:</b> Stainless steel rear deck.
LEGS	1 <sup>5</sup> / <sub>8</sub> " tubular, stainless steel with 1" adjustable thermoplastic foot.
DISH WELL & FAUCET	5" stainless steel disher well with removable perforated basket. Chrome-plated fine-stream faucet.
DROP-IN ICE CREAM UNIT	Stainless steel top and removable hinged door lid. Ice cream well: No. 2B dull stainless steel. NSF listed.
ELECTRICAL	115 volt, 60 hz, 1 phase AC. Furnished with six foot rubber cord. Running load: 4 amps. Also available in 230 volt, 50 hz., 1 phase <b>CE</b> marked.
REFRIGERATION	1/5 h.p.
PLUMBING	Drain-connection - 1" NPS Male. Cold water connection: 1/2" IPS shank (includes 1/4" MPT tailpiece).



8300 West Good Hope Road • Milwaukee, WI 53223 • Phone 414-353-7060 • Fax 414-353-7069  
 Toll Free 800-558-5592 • E-Mail: Perlick@Perlick.com • www.Perlick.com

Perlick is committed to continuous improvement.  
 Therefore, we reserve the right to change specifications without prior notice.

Form No. DC01  
 Rev. 07.03.07