

# THREE TANK SINKS – STAINLESS STEEL BOWLS



## MODELS

TS Series

TS33C

TS43R

TS43L

TS53C

TS63C

TS73C

TS83C

## MODELS

TSD Series

TSD33C

TSD43R

TSD43L

TSD53C

TSD63C

TSD73C

TSD83C



## Perlick Features

- Deep drawn stainless steel bowls
- NSF listed, commercial grade hot/cold water faucet (must be ordered separately)
- Embossed stainless steel drainboard
- Underside is sound-deadened
- Stainless steel legs install without tools and have “Rust Free” thermoplastic feet



GENERATIONS OF  
EXCELLENCE

Form No. SK04  
Rev. 01.16.2012

**Perlick**<sup>®</sup>

8300 West Good Hope Road • Milwaukee, WI 53223 • Phone 414.353.7060 • Fax 414.353.7069  
Toll Free 800.558.5592 • E-Mail [perlick@perlick.com](mailto:perlick@perlick.com) • [www.perlick.com](http://www.perlick.com)

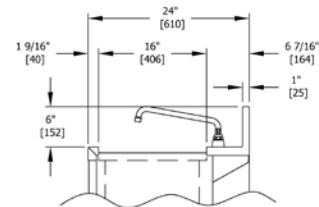
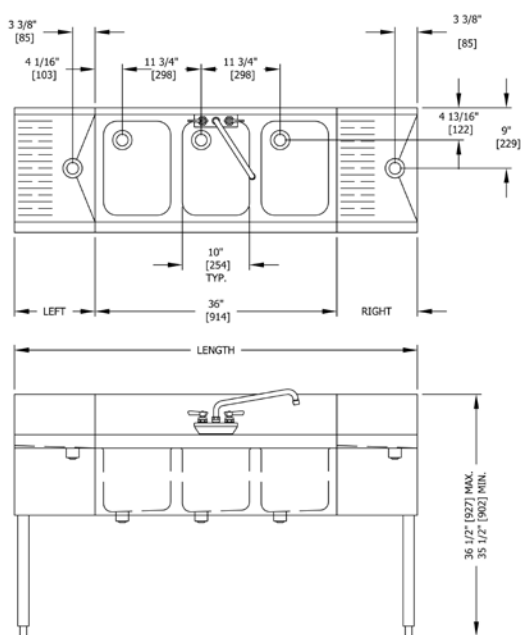
# Size and Specifications

Three Tank Sinks - Stainless Steel Bowls

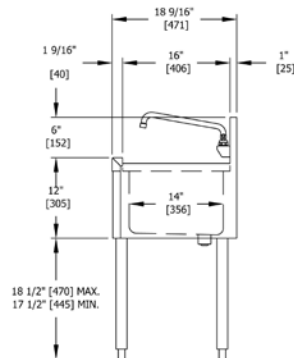
Job \_\_\_\_\_  
 Area \_\_\_\_\_  
 Item No. \_\_\_\_\_  
 Model No. \_\_\_\_\_



MODEL NOS.	TS(D)33C	TS(D)43R	TS(D)43L	TS(D)53C	TS(D)63C	TS(D)73C	TS(D)83L
LENGTH FT. (mm)	36" (914)	48" (1219)	48" (1219)	60" (1524)	72" (1829)	84" (2134)	96" (2438)
SHIP WT. lbs. (kg)	95 (43)	115 (52)	115 (52)	125 (57)	145 (66)	160 (73)	195 (88)
DRAINBOARD LOCATIONS	N/A	Left	Right	Left/Right	Left/Right	Left/Right	Left/Right
DRAINBOARD LENGTHS IN. (mm)	N/A	12" (305)/NA	NA/12" (305)	12" (305) each side	18" (458) each side	24" (610) each side	30" (762) each side
FRONT & SIDES	Stainless steel						
BACK & BOTTOM	Stainless steel						
BACKSPLASH	Stainless steel 6" high (4" high optional) with 1" return at the top, mechanically fastened and sealed to hand sink top with steel support brackets. <b>TS Series:</b> Stainless steel rear deck						
LEGS	1-5/8" tubular, stainless steel with 1" adjustable thermoplastic foot.						
DRAINBOARD	Embossed stainless steel, 16" deep front to back with 1-1/2" stainless steel drain socket. All horizontal and vertical edges 1/4" radius with balled corners. Underside sound deadened and reinforced with welded brackets.						
BOWLS	Stainless steel with sound deadening. 10"x14"x9-1/4" deep. All horizontal and vertical edges 1-1/2" radius with balled corners. Furnished with 1-1/2" stainless steel drain socket. 8-1/2" standpipe.						
WATER FAUCET	Chrome plated, hot and cold, 10" swing spout faucet. Heavy-duty all brass construction. <b>Must be ordered separately.</b>						
PLUMBING	Drain connection: 1-1/2" NPS male. Hot and cold water connection <b>TS Series:</b> 3/8" copper supply tubes <b>TS Series:</b> 1/2" IPS shanks and nuts						
OPTIONAL ACCESSORIES	Wall Faucet with 10" Swing Spout (also available Lead-Free), Deck Faucet with 10" Swing Spout (also available Lead-Free), Drain Connection Kit, Wet Waste Pan (drains into standpipe)						



TSD END VIEW



*\*Faucet shown for clarity; must be ordered separately*

Form No. SK04  
 Rev. 01.16.2012



8300 West Good Hope Road • Milwaukee, WI 53223 • Phone 414.353.7060 • Fax 414.353.7069  
 Toll Free 800.558.5592 • E-Mail perlick@perlick.com • www.perlick.com

Perlick is committed to continuous improvement. Therefore, we reserve the right to change specifications without prior notice