

DRAINBOARDS

TSF SERIES

Perlick Features

- Embossed stainless steel drainboard
- Screw-in legs for fast installation
- Stainless steel legs install without tools and have "Rust Free" Thermoplastic feet
- Allows for increased glass storage capacity

MODELS

TSF Series

- TSF12*
- TSF18*
- TSF24
- TSF30
- TSF36
- TSF42
- TSF48

** Available in 1" increments from 13" to 23"*



GENERATIONS OF
EXCELLENCE

Form No.DB03
Rev. 01.16.2012

Perlick[®]

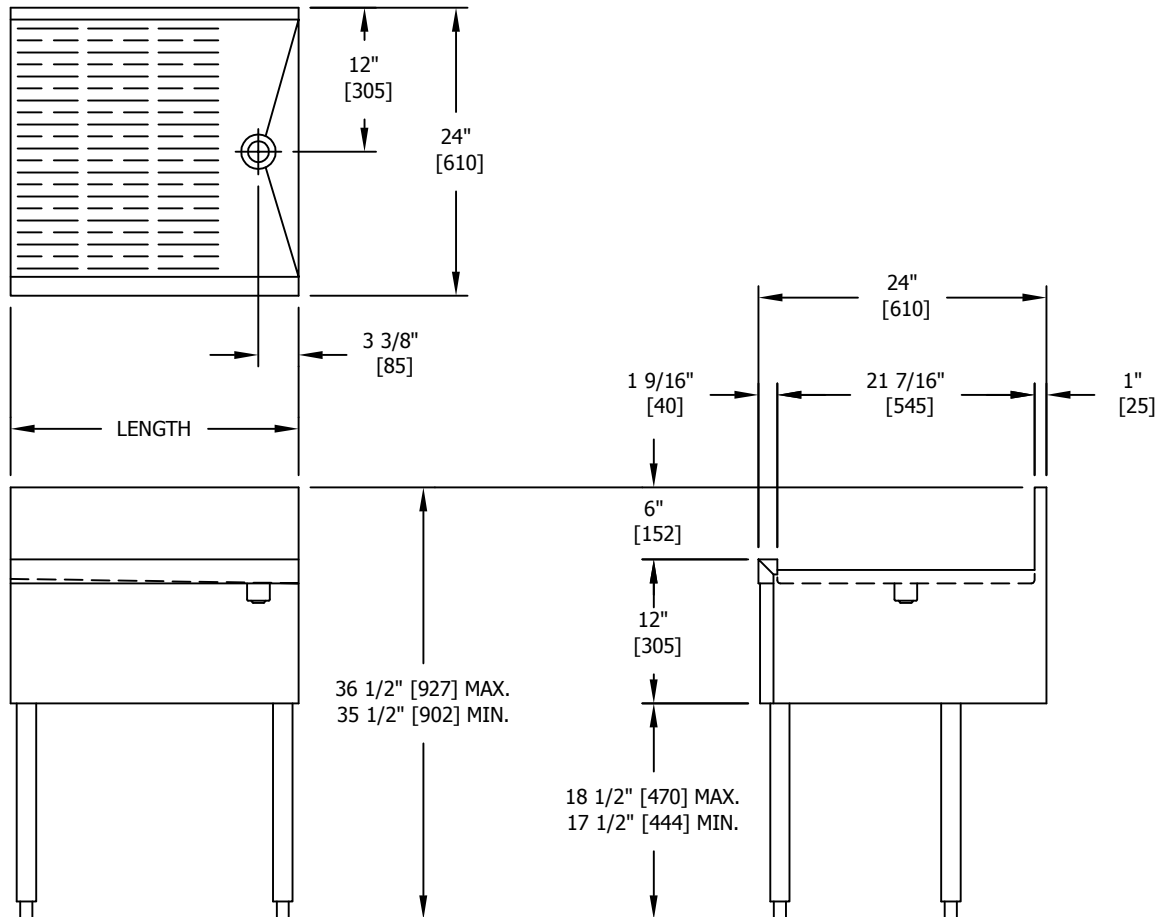
8300 West Good Hope Road • Milwaukee, WI 53223 • Phone 414.353.7060 • Fax 414.353.7069
Toll Free 800.558.5592 • E-Mail perlick@perlick.com • www.perlick.com

Size and Specifications

Drainboards - TSF Series

Job _____
 Area _____
 Item No. _____
 Model No. _____

MODEL NOS.	TSF12	TSF18	TSF24	TSF30	TSF36	TSF42	TSF48
LENGTH IN. (mm)	12" (305)	18" (457)	24" (610)	30" (914)	36" (914)	42" (1067)	48" (1219)
SHIP WT. lbs. (kg)	35 (16)	40 (18)	45 (20)	50 (23)	60 (27)	90 (41)	115 (52)
FRONT & SIDES	Stainless steel						
BACKSPLASH	TSF Series: Stainless steel 6" high (4" optional) with 1" return at top, mechanically fastened and sealed to top with steel support brackets						
BACK	Galvanized steel						
DRAINBOARD	Embossed stainless steel, 21-7/16" deep front to back (<i>TSF only</i>). All horizontal and vertical edges 1/4" radius with balled corners. Underside reinforced with welded brackets. Stainless steel drain socket.						
LEGS	1-5/8" tubular, stainless steel with 1" adjustable thermoplastic foot						
PLUMBING	Drain connection- 1-1/2" NPS male						



Form No. DB03
 Rev. 01.16.2012



8300 West Good Hope Road • Milwaukee, WI 53223 • Phone 414.353.7060 • Fax 414.353.7069
 Toll Free 800.558.5592 • E-Mail perlick@perlick.com • www.perlick.com

Perlick is committed to continuous improvement. Therefore, we reserve the right to change specifications without prior notice