

# RANDELL®

## Display Merchandiser Remote Refrigerated Full View models 43000A

model single service  43250A  43262A  43274A  43350A  43362A  43374A  
pass-thru  43250PA  43262PA  43274PA  43350PA  43362PA  43374PA

### Description:

Remote refrigerated display unit with insulated self-closing glass doors in upper display structure. Display area with stainless steel interior, (2) angled display mirrors, (4) display shelves and side mounted illumination. Refrigerated storage base with service ledge and stainless steel doors on concealed hinges. Evaporator blower coils with expansion valve, and refrigeration lines supplied and installed. Condensing unit and controls not provided. Unit has 6" high adjustable and movable legs. Available as a Pass-Thru unit.

### Specifications:

**CABINET EXTERIOR:** Cabinet body is constructed of all metal. Service ledge to be one piece of die-formed 16 gauge stainless steel with 2 1/2" nosing. Ends at top fitted with recessed heavy gauge steel bars for field bolting units together, producing a hairline seam. **Upper display structure;** to have stainless steel exterior and interior sides. Self-closing, thermalpane glass doors that are easily removable for cleaning, riding in nylon track. **Base;** Door opening frames to be ABS and contain magnetic strip for positive sealing of gaskets. Exterior body to be painted corrosion resistant steel. Unit totally prewired to junction box. Legs to be 6" high with adjustable bullet foot. Legs mounted to full length channel frame assembly which is integrally welded to bottom of assembly. Legs to be movable left to right to avoid floor obstacles.

**CABINET INTERIOR:** **Upper display structure;** (4) powder coated wire shelves provided, with (2) angled display mirrors. Illumination to be provided by (2) fluorescent fixtures, (1) per side, removable without the need for tools. **Base;** interior to be ABS thermoplastic at ends only. Stainless steel interior liner to be covered cornered to form bottom and back. One powder coated finished shelf provided behind each door. Upper structure, and base with high density, CFC free, urethane expanding foam.

**UPPER DOORS:** (2) removable, insulated sliding glass doors are self-closing on ball bearings riding in nylon track for smooth operation. Rubber wiper between doors to minimize air loss, and vinyl frame to reduce condensation. Door locking system is standard. Doors are easily removed for cleaning.

**BASE DOORS:** Stainless steel front with easy to grasp stainless handles, mounted on heavy duty concealed hinges. Hinges are all stainless steel with bronze pivot pin in nylon bushing. Self closing doors with foamed in place insulation, and press-fit magnetic gaskets.

model 43250 shown



**REFRIGERATION:** Base and upper structure supplied with separate refrigeration coils. Expansion valve and refrigeration lines provided and installed for connection at PNL area (specify refrigerant if other than R-134a). Condensing unit not provided.

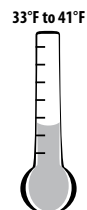
**PASS THRU MODELS:** Same as above except to have (2) sets of self-closing doors, and no angled display mirrors or mirrored back. (4) fluorescent fixtures-(2) per side provided.

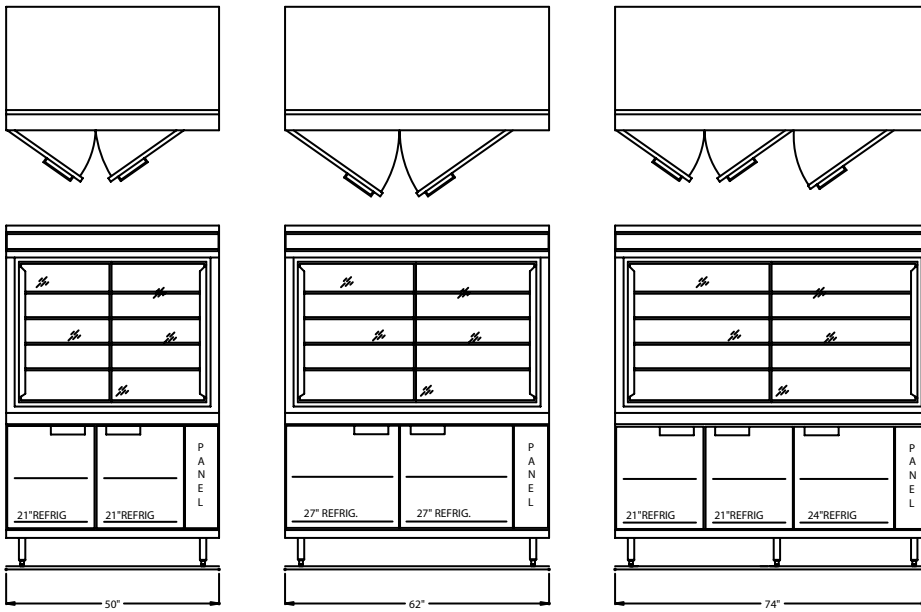
### Standard Features:

- Evaporator blower coils with expansion valve and refrigeration lines provided and installed for use with R-134a refrigerant (specify otherwise)
- Display area illuminated from sides for shadow free display
- Fluorescent illumination
- Adjustable shelving
- Insulated glass doors are self-closing and easily removed for cleaning
- Foamed in place "CFC free" urethane insulation
- Separate coil for upper structure for more effective cooling of display area
- 6" high legs—adjustable and movable

### Options & Accessories:

- 4" casters
- 6" casters
- Stainless steel back
- Stainless steel ends
- Optional power core, 9' - 115V plug





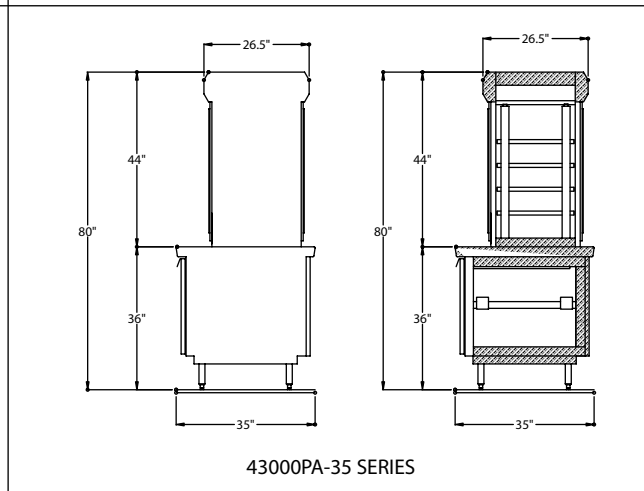
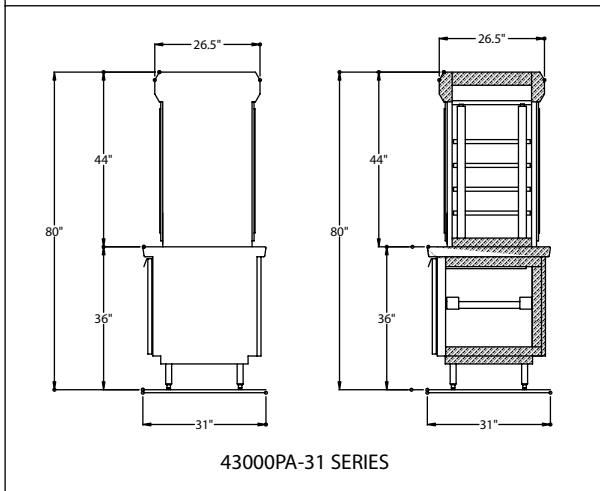
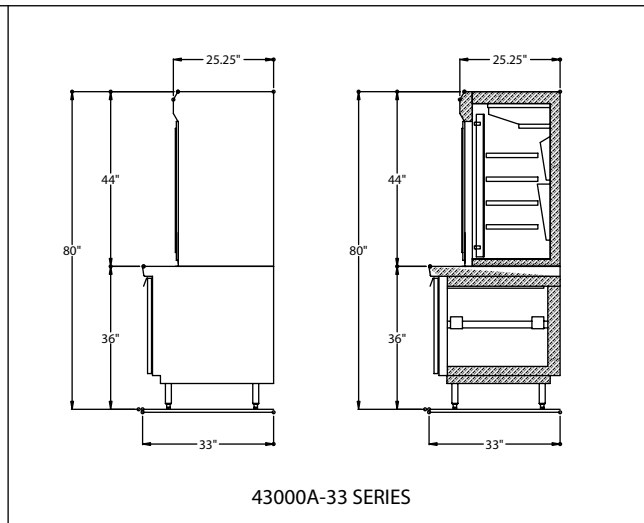
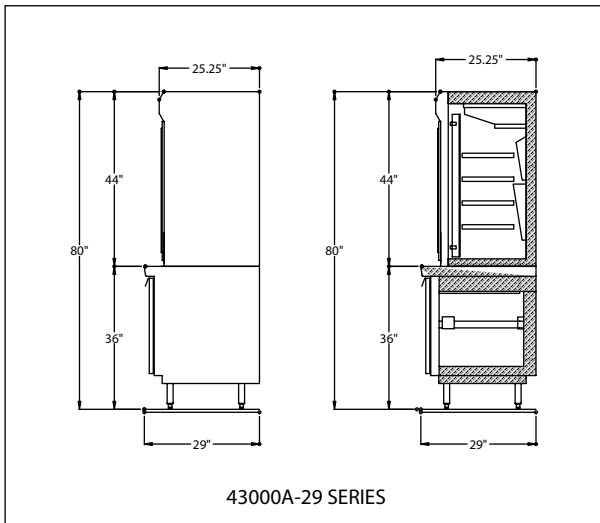
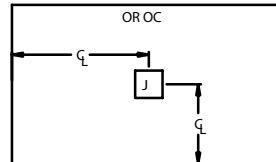
**LEGEND FOR MODEL #43000A/PA**  
 AFF = ABOVE FIXED FLOOR

**J** JUNCTION BOX 6 1/2" AFF. 120V-60-1PH-6.0 Amps HARDWIRE CONNECTION

**OR** 1/4" LIQUID, 3/8" SUCTION LINE 8 1/2" AFF.

**OC** CONDENSATE DRAIN 1/2" AT 8 1/2" AFF

MODEL 50" A/PA = 4500 BTU's  
 MODEL 62" A/PA = 5450 BTU's  
 MODEL 74" A/PA = 5450 BTU's



Full View Display Case Door Opening Sizes - Interior Depths			
Unit Length	Clearances Through Door		Interior Depth Behind Sliding Glass Doors
	Lt. to Rt.	Top to Bottom	
50"	18 3/4"	32"	19 1/4" *
62"	24 3/4"	32"	19 1/4" *
74"	30 3/4"	32"	19 1/4" *

Single Service Models										
29" Deep	L	H	No. Doors	No. of 4" Deep Pans in Base Top	Recommended HP/Refrigerant	Amps	Volt/Cycle/Phase	NEMA (optional)	BTU	Ship Wt (lbs)
43250A	50"	80"	(2) 21"	(4) 1/2	1/2 HP/134a	6	115/60/1	5-15P	2395	593
43262A	62"	80"	(2) 27"	(4) 1/2 & (1) 1/3	1/2 HP/134a	6	115/60/1	5-15P	3099	678
43274A	74"	80"	(2) 21" & (1) 24"	(6) 1/2	3/4 HP/134a	6	115/60/1	5-15P	3495	764
33" Deep										
43350A	50"	80"	(2) 21"	(4) 1/2	1/2 HP/134a	6	115/60/1	5-15P	2395	593
43362A	62"	80"	(2) 27"	(4) 1/2 & (1) 1/3	1/2 HP/134a	6	115/60/1	5-15P	3099	678
43374A	74"	80"	(2) 21" & (1) 24"	(6) 1/2	3/4 HP/134a	6	115/60/1	5-15P	3495	764
Pass Thru Models										
43250PA	50"	80"	(2) 21"	(4) 1/2	1/2 HP/134a	6	115/60/1	5-15P	4019	593
43262PA	62"	80"	(2) 27"	(4) 1/2 & (1) 1/3	1/2 HP/134a	6	115/60/1	5-15P	4725	678
43274PA	74"	80"	(2) 21" & (1) 24"	(6) 1/2	3/4 HP/134a	6	115/60/1	5-15P	5342	764
35" Deep										
43350PA	50"	80"	(2) 21"	(4) 1/2	1/2 HP/134a	6	115/60/1	5-15P	4019	593
43362PA	62"	80"	(2) 27"	(4) 1/2 & (1) 1/3	1/2 HP/134a	6	115/60/1	5-15P	4725	678
43374PA	74"	80"	(2) 21" & (1) 24"	(6) 1/2	3/4 HP/134a	6	115/60/1	5-15P	5342	764



Component