

Drop-In Frost Top models 9800SCA

model 9828SCA 9843SCA 9857SCA 9872SCA 9886SCA

Description:

Drop-in self-contained, mechanically cooled, frost top unit with one piece stainless steel top, perimeter troughs and drain opening. R-404a refrigerant, "CFC free". Wrapped refrigeration construction with condensing unit, expansion valve, and thermostatic control. Cordset for 115V operation.

Specifications:

UNIT EXTERIOR: Top to be 1 piece 18-gauge stainless steel with a 2" overhang on all sides, perimeter trough, and drain opening. Unit top is elevated above counter surface. Condensing unit mounted on corrosion resistant framework, suspended below unit body. Studs fitted to each corner for drawing unit down tight against countertop. Stainless steel louver panel provided for field installation in counter.

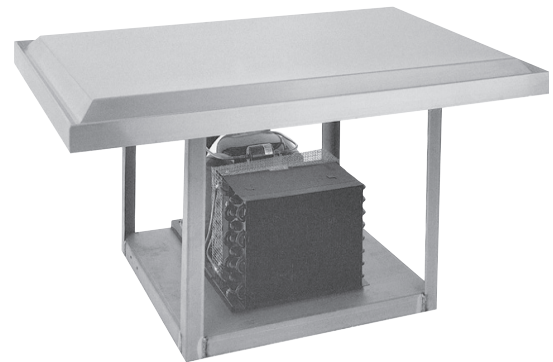
UNIT INTERIOR: Unit interior wrapped with refrigerating lines. Refrigeration lines insulated with CFC free, foamed in place polyurethane.

REFRIGERATION: CFC free, R-404a refrigeration system to be wrapped refrigeration construction. Condensing unit, expansion valve, and thermostatic control for operator adjustability mounted on corrosion resistant framework, suspended below unit body. 8' cordset (NEMA 5-15P) supplied for 115V.

Standard Features:

- Self-contained refrigeration system with thermostatic control, system utilizes "CFC free", R-404a refrigerant
- All stainless steel top—one piece
- Foamed in place, "CFC free" urethane insulation
- Perimeter troughs, drain provided
- Stainless steel louver provided
- 9' cordset for 115V plug-in operation
- .625" diameter drain welded in trough
- Custom sizes available

model 9843SCA shown



LEGEND FOR MODEL # 9828SCA

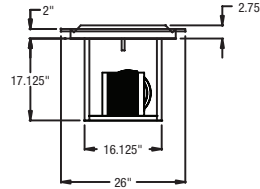
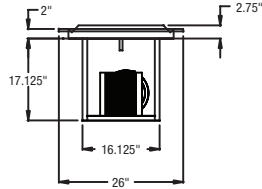
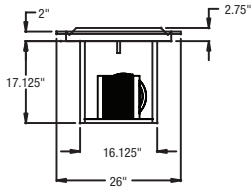
HP 1/4 HP COMPRESSOR
R404A REFRIGERANT
JUNCTION BOX:
115V/60Hz/1Ph/5A
8' LONG CORD SET
(NEMA 5-15P)
DRAIN

LEGEND FOR MODEL # 9843SCA

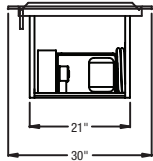
HP 1/4 HP COMPRESSOR
JUNCTION BOX:
115V/60Hz/1Ph/5A
8' LONG CORD SET
(NEMA 5-15P)
DRAIN

LEGEND FOR MODEL # 9857SCA

HP 1/4 HP COMPRESSOR
JUNCTION BOX:
115V/60Hz/1Ph/5A
8' LONG CORD SET
(NEMA 5-15P)
DRAIN

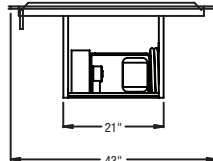


CUTOUT DIMENSION
26.5" X 22.5"



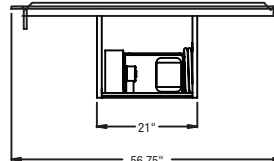
MODEL #9828SC

CUTOUT DIMENSION
39.5" X 22.5"



MODEL #9843SC

CUTOUT DIMENSION
53.25" X 22.5"



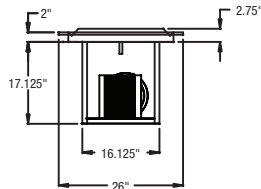
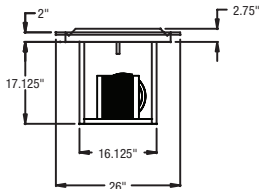
MODEL #9857SC

LEGEND FOR MODEL # 9872SCA

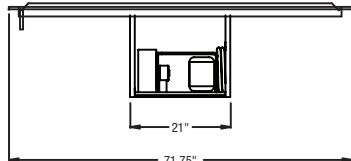
HP 1/4 HP COMPRESSOR
JUNCTION BOX:
115V/60Hz/1Ph/5A
8' LONG CORD SET
(NEMA 5-15P)
DRAIN

LEGEND FOR MODEL # 9886SCA

HP 1/4 HP COMPRESSOR
R404A REFRIGERANT
JUNCTION BOX:
115V/60Hz/1Ph/5A
8' LONG CORD SET
(NEMA 5-15P)
DRAIN

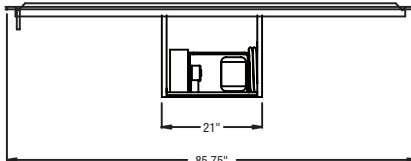


CUTOUT DIMENSION
68.25" X 22.5"



MODEL #9872SC

CUTOUT DIMENSION
82.25" X 22.5"



MODEL #9886SC

Model	O/A Dimension		Cut Out Size		H.P.	Volts	Amps	NEMA	Ship Wt.
	Length	Width	Length	Width					
9828SCA	30"	26"	26 1/2"	22 1/2"	1/4	115/60/1	5	5-15P	140
9843SCA	43"	26"	39 1/2"	22 1/2"	1/4	115/60/1	5	5-15P	175
9857SCA	56 3/4"	26"	53 1/4"	22 1/2"	1/4	115/60/1	5	5-15P	210
9872SCA	71 3/4"	26"	68.25"	22 1/2"	1/4	115/60/1	5	5-15P	245
9886SCA	85 3/4"	26"	82.25"	22 1/2"	1/4	115/60/1	5	5-15P	280

Designed to maintain frosty cold appearance.



Component