

## Modular Remote Low Side Flake & Nugget Ice Machine

### Prodigy® Flake and Prodigy® Nugget Ice Machine



Shown on B948S bin with optional KLP85 legs.

#### Features

**AutoAlert™ indicator lights** constantly communicate about operating status and actually signal your staff when it's time to descale, sanitize and more - making upkeep practically foolproof.

**Preventative maintenance is simpler** than ever with easily-removed panels allowing clear access to internal components and a diagnostic code display insuring the right fix the first time.

Ideal for customers with central refrigeration systems.

**Maximize capacity** by placing 2 units next to each other side by side on a 48" bin, bringing ice production levels up to 3100 lbs. per 24 hours.

An optional **advanced feature Smart-Board™** provides NAFEM data protocol and additional operational data that can be displayed on-screen or transmitted remotely, resulting in early alert and fast diagnosis of operating issues.

An optional **Vari-Smart™ ultrasonic ice level control** sensor allows you the flexibility to program ice levels, for up to 7 days, keeping just the right amount of freshly made ice in the bin.

**Industry leading** 3 year parts and labor warranty

#### 24 Hour Volume Production\*

##### Flake Ice Machine

F0822L			F1222L			F1522L		
70°F/21°C 50°F/10°C lb/kg	Air Water	90°F/32°C 70°F/21°C lb/kg	70°F/21°C 50°F/10°C lb/kg	Air Water	90°F/32°C 70°F/21°C lb/kg	70°F/21°C 50°F/10°C lb/kg	Air Water	90°F/32°C 70°F/21°C lb/kg
865/392		640/290	1180/535		1000/454	1445/655		1205/547

##### Nugget Ice Machine

N0622L			N0922L			N1322L		
70°F/21°C 50°F/10°C lb/kg	Air Water	90°F/32°C 70°F/21°C lb/kg	70°F/21°C 50°F/10°C lb/kg	Air Water	90°F/32°C 70°F/21°C lb/kg	70°F/21°C 50°F/10°C lb/kg	Air Water	90°F/32°C 70°F/21°C lb/kg
800/365		585/265	1090/494		915/415	1330/605		1100/499

\*See user manual for EPR settings when connecting to a rack system.



#### Modular Bin Options

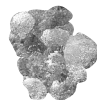
Model Number	Dimensions W" x D" x H"	Application Capacity lb/kg	AHRI Certified Bin Capacity lb/kg	Finish	Ship Weight lb/kg
B948S*	48 x 34 x 44**	893/406	700/319	SS	220/100
BH1100BB-A	48 x 34 x 50**	1100/499	860/390	SS w/GBB***	280/127
BH1100SS-A	48 x 34 x 50**	1100/499	860/390	SS	280/127
BH1300BB-A	60 x 34 x 50**	1400/635	1100/499	SS w/GBB***	310/140
BH1300SS-A	60 x 34 x 50**	1400/635	1100/499	SS	310/140
BH1600BB-A	60 x 34 x 62**	1375/624	1755/796	SS w/GBB***	370/168
BH1600SS-A	60 x 34 x 62**	1375/624	1755/796	SS	370/168

\*Contact Scotsman for bin top requirements. \*\* Add 6" H for bin legs. \*\*\* Stainless Steel with Galvanized Back & Bottom



Bin: 948S

Flake Ice



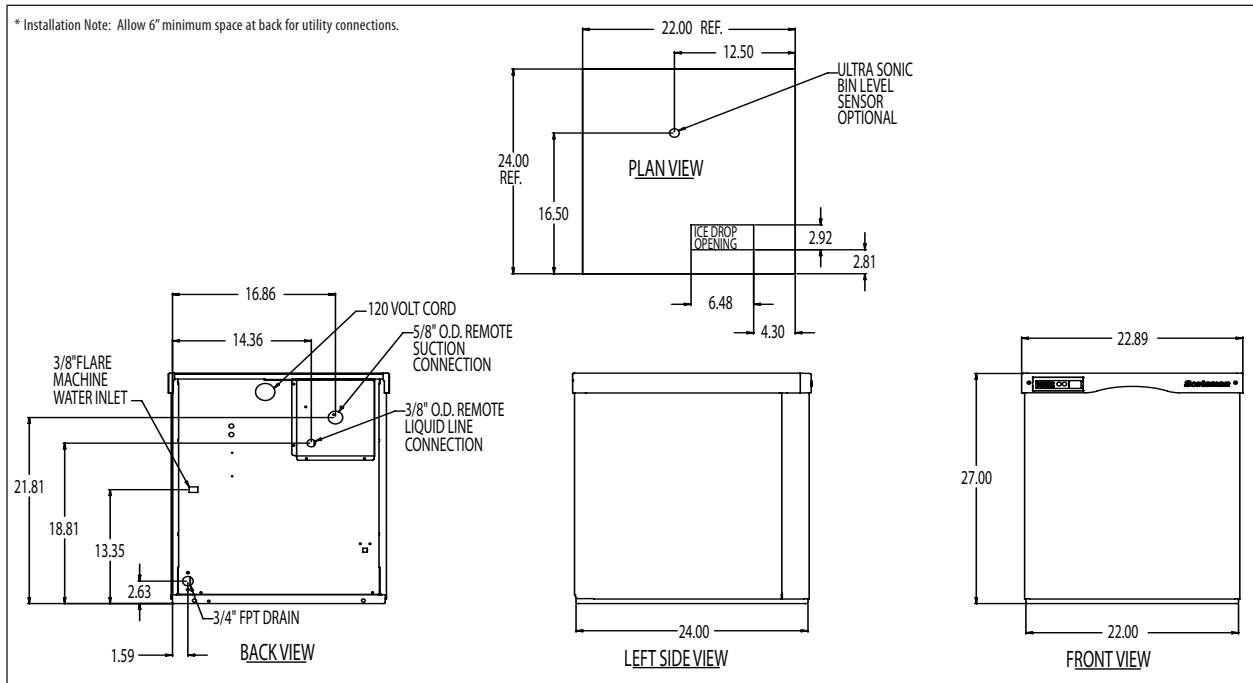
Nugget Ice



#### Warranty

• 3 years parts and labor on all components.

Warranty valid in North, South & Central America. Contact factory for warranty in other regions.



## Specifications

Model Number	Condenser Unit	Basic Electrical Volts/Hz/Phase	Max. Fuse Size (amps)	Circuit Wires	Min. Circuit Ampacity	Energy Consumption kWh/100 lb (45.4 kg) 90°F(32°C)/70°F(21°C)	Water Usage Gallons/100 lb (liters/45.4 kg)	
							Potable 90°F(32°C)/70°F(21°C)	Condenser 90°F(32°C)/70°F(21°C)
F0822L-1A	Remote Low Side	115/60/1	15	2	Cord	1.24	12.0/45.5	-
F1222L-1A	Remote Low Side	115/60/1	15	2	Cord	0.82	12.0/45.5	-
F1522L-1A	Remote Low Side	115/60/1	15	2	Cord	0.72	12.0/45.5	-
N0622L-1A	Remote Low Side	115/60/1	15	2	Cord	1.35	12.0/45.5	-
N0922L-1A	Remote Low Side	115/60/1	15	2	Cord	0.87	12.0/45.5	-
N1322L-1A	Remote Low Side	115/60/1	15	2	Cord	0.73	12.0/45.5	-

## All Models

Dimensions (W x D x H):

Unit:  
22.9" x 24" x 27"  
(58.2 x 61.0 x 68.6 cm)

Shipping Carton:  
25.5" x 27.5" x 32.5"  
(64.8 x 69.9 x 82.6 cm)

Shipping Weight:  
175 lb / 79 kg, F0822L & N0622L  
217 lb / 98 kg, F1222L & N0922L  
224 lb / 102 kg, F1522L & N1322L

BTU per hour:  
4,000 F0822L & N0622L  
6,000 F1222L & N0922L  
7,200 F1522L & N1322L

Refrigerant\*:  
R-404A  
\* Refrigerant must be added at initial start-up.

## Accessories

Model Number	Description
KVS	Vari-Smart™ Ice Level Control - Program ice bin levels to match ice needs.
KSBU	Smart-Board™ Advanced Control - Use additional operational data for fast diagnosis.
KSBU-N	Smart-Board™ Advanced Control with Network - Network capable.
NME654-RHS-A/C	Remote Condenser Package for F0822L & N0622L, 208-230V/60/1
NME954-RHS-A/C	Remote Condenser Package for F1222L & N0922L, 208-230V/60/1
NRTE45	Line set, R-404A, 45 ft. not pre-charged, for NMECondenser Packages
COMPWARNME654RHSA	Extra 4 Year Compressor Warranty for NME654-RHS-A/C
COMPWARNME954RHSA	Extra 4 Year Compressor Warranty for NME954-RHS-A/C

\* Scotsman recommends all ice machines have water filtration. See Scotsman Sanitation Matrix for details.

## Operating Requirements

	Minimum	Maximum
Air Temperatures	50°F (10°C)	100°F (38°C)
Water Temperatures	40°F (4.4°C)	100°F (38°C)
Remote Cond. Temps	-20°F (-29°C)	120°F (49°C)
Water Pressures	20 PSIG (1.4 bar)	80 PSIG (5.5 bar)
Electrical Voltage	-10%	+10%

Specifications and design are subject to change without notice.

Scotsman Ice Systems  
775 Corporate Woods Parkway  
Vernon Hills, IL 60061

1-800-SCOTSMAN  
Fax: 847-913-9844  
E-mail: [customer.service@scotsman-ice.com](mailto:customer.service@scotsman-ice.com)

[www.scotsman-ice.com](http://www.scotsman-ice.com)