

FME2404 – 2400 lb Flake Ice Machine

Modular Flake Ice Machine with AutoSentry™



Shown on B948S bin with optional KLP8S legs..

Key Advantages

AutoSentry™ Monitoring System constantly checks workload on gearbox shutting down system before a problem develops preventing costly repairs.

Electrical conductivity **water sensor** eliminates low or no water failures and cannot be affected by adverse water conditions.

Plastic drain pan with larger outlet provides greater ability to quickly channel water away **preventing particulate build-up and rust.**

Rust and restriction free drain system features one-piece plastic drain tubes with larger ID for **obstruction-free water flow.**

Durable, high grade stainless steel construction with massive, self-aligning spherical roller bearings; patented double-flight auger that evenly distributes the load; and heavy duty direct drive gearbox for **high reliability and long life.**

Industry leading 3 year parts and labor warranty.

24 Hour Volume Production

Air Cooled			Remote Cooled		
70°F/21°C 50°F/10°C lb/kg	Air Water	90°F/32°C 70°F/21°C lb/kg	70°F/21°C 50°F/10°C lb/kg	Air Water	90°F/32°C 70°F/21°C lb/kg
2455/1114		1800/816	1960/889		1780/807



Modular Bin Options

Model Number	Dimensions W" x D" x H"	AHRI Certified Bin Capacity lb/kg	Application Capacity lb/kg	Finish	Ship Weight lb/kg
B842S*	42 x 34 x 44**	778/353	610/277	SS	185/84
B948S*	48 x 34 x 44**	700/319	893/406	SS	220/100
BH1100BB*	48 x 34 x 50**	860/390	1100/499	SS w/GBB***	280/127
BH1100SS*	48 x 34 x 50**	860/390	1100/499	SS	280/127
BH1300BB*	60 x 34 x 50**	1100/499	1400/635	SS w/GBB***	310/140
BH1300SS*	60 x 34 x 50**	1100/499	1400/635	SS	310/140
BH1600BB*	60 x 34 x 62**	1755/796	1375/624	SS w/GBB***	370/168
BH1600SS*	60 x 34 x 62**	1755/796	1375/624	SS	370/168

*See price list for Bin Top. ** Add 6"H for bin legs.



Bin: BH1300SS-A

Flake Ice

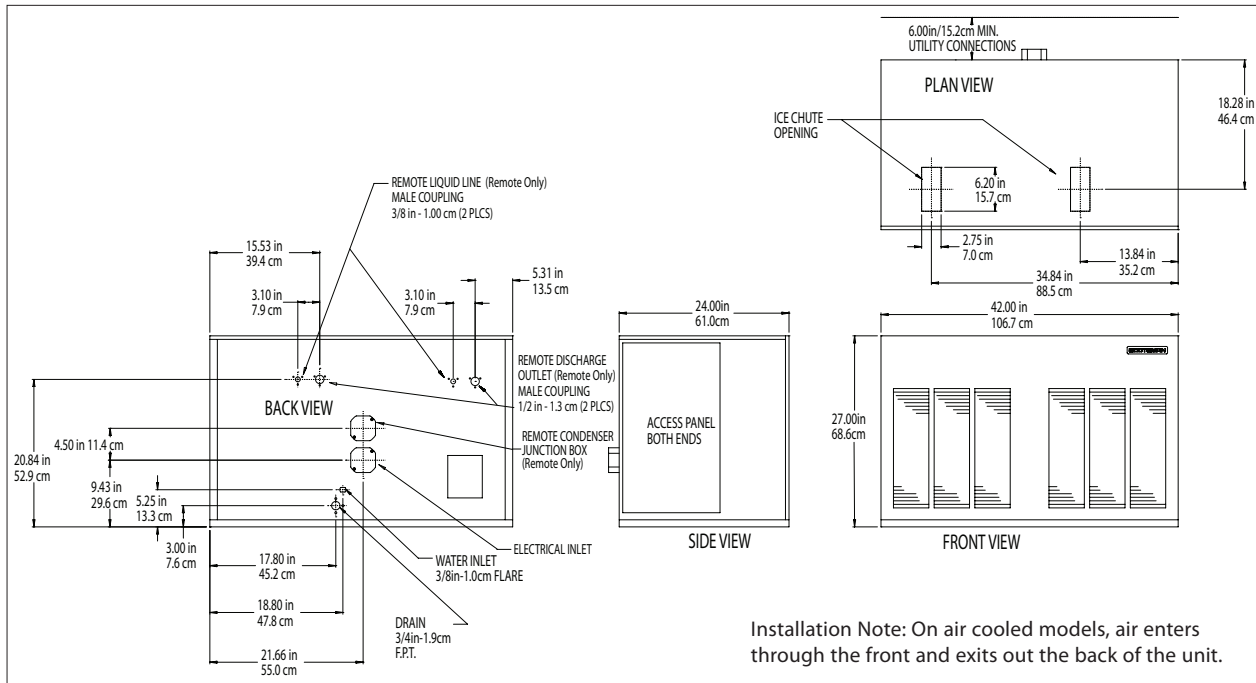


Cools more quickly than other ice forms. Used in produce and fish displays.

Warranty

- 3 years parts and labor on all components.
- 5 years parts on the compressor.

Warranty valid in North, South & Central America. Contact factory for warranty in other regions.



Specifications

Model Number	Condenser Unit	Basic Electrical Volts/Hz/Phase	Max. Fuse Size or HACR Circuit Breaker (amps)	Circuit Wires	Min. Circuit Ampacity	Energy Consumption kWh/100 lb (45.4 kg) 90°F(32°C)/70°F(21°C)	Water Usage Gallons/100 lb (liters/45.4 kg)	
							Potable 90°F(32°C)/70°F(21°C)	Condenser 90°F(32°C)/70°F(21°C)
FME2404AS-32B	Air	208-230/60/1	25	2	20.6	3.26	12.0/45.5	-
FME2404RS-32B	Remote	208-230/60/1	30	2	23.1	2.45	12.0/45.5	-
FME2404AS-3B	Air	208-230/60/3	20	3	14.9	3.00	12.0/45.5	-

All Models

Dimensions (W x D x H):
 Unit: 42" x 24" x 27"
 (106.7 x 61.0 x 68.6 cm)
 Shipping Carton: 45.5" x 27.5" x 32"
 (115.6 x 69.85 x 81.3 cm)
 Shipping Weight: 425 lb/193 kg
 BTUs per hour: 15,800

Accessories

Model Number	Description
ERC302-32A	Remote Condenser for FME2404RS-32B, 208-230/60/1 - Consult Remote Condenser Spec Sheet for details.
RTE10	Line set, Precharged, R-404A, 10ft.
RTE25	Line set, Precharged, R-404A, 25ft.
RTE40	Line set, Precharged, R-404A, 40ft.
RTE75	Line set, Precharged, R-404A, 75ft.

* Scotsman recommends all ice machines have water filtration. See Scotsman Sanitation Matrix for details.

Operating Requirements

	Minimum	Maximum
Air Temperatures	50°F (10°C)	100°F (38°C)
Water Temperatures	40°F (4.4°C)	100°F (38°C)
Remote Cond. Temps	-20°F (-29°C)	120°F (49°C)
Water Pressures	20 PSIG (1.4 bar)	120 PSIG (bar)
Electrical Voltage	-5%	+10%

Specifications and design are subject to change without notice.

Scotsman Ice Systems
 775 Corporate Woods Parkway
 Vernon Hills, IL 60061

1-800-SCOTSMAN
 Fax: 847-913-9844
 E-mail: customer.service@scotsman-ice.com

www.scotsman-ice.com