

MDT4F12 – TouchFree® Ice Machine / Dispenser

Flake Ice Machine / Dispenser



Features

Makes and dispenses flaked ice.

Sleek, european design with attractive rounded corners and informative instruction labels.

Up to 25% less fan noise allows installation of the unit in the quietest hallways.

Improved dispensing with easier access and room for most containers.

TouchFree® actuation provides convenient one-hand operations and eliminates the risk of cross contamination.

Flexible utility location.

24 Hour Volume Production

Air Cooled

70°F/21°C 50°F/10°C lb/kg	Air Water	90°F/32°C 70°F/21°C lb/kg
453/205		351/159

Flake Ice



Cools more quickly than other ice forms. Ideal for healthcare.



CERTIFIED
ISO
9001:2008

Water / Ice Selection Switch



Select ice only or ice and water at the touch of a switch, conveniently located on the front panel.

Warranty

- 2 years parts and labor on all components.
- 5 years parts on compressor.

Warranty valid in North, South & Central America.
Contact factory for warranty in other regions.

Ice Vending Capacity

Peak Vends Per Hour*

Number of Vends Per Hour from Full Bin + Recovery = Total Vends

Model Number	Bin Storage lb./kg.	1 Hour Recovery Cap lb./kg.	2 fl. oz. Bin	2 fl. oz. Recovery	Total 2 fl. oz. Vends	4 fl. oz. Bin	4 fl. oz. Recovery	Total 4 fl. oz. Vends	6 fl. oz. Bin	6 fl. oz. Recovery	Total 6 fl. oz. Vends	8 fl. oz. Bin	8 fl. oz. Recovery	Total 8 fl. oz. Vends
MDT4F12A	12/5	19/9	192	+ 302	= 494	96	+ 151	= 247	64	+ 101	= 165	48	+ 76	= 124

1 lb. apx. = 32 fl. oz.

*Based on 70° Air and 50° Water Temperatures

Scotsman Ice Systems • 775 Corporate Woods Parkway • Vernon Hills, IL 60061

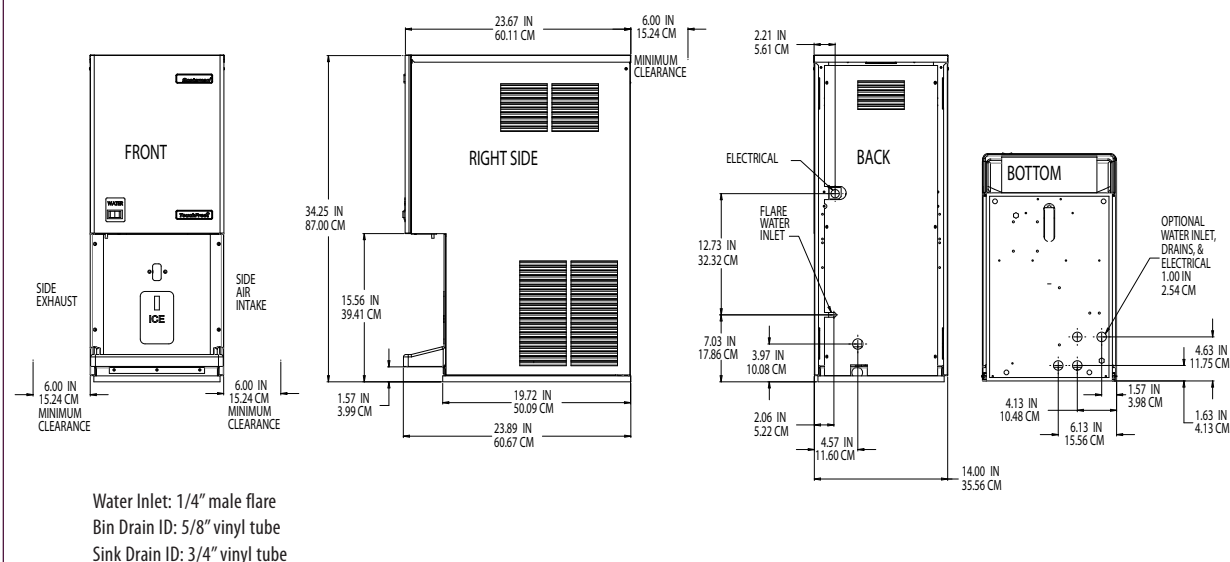
1-800-SCOTSMAN

Fax: 847-913-9844

E-mail: customer.relations@scotsman-ice.com

www.scotsman-ice.com

Installation Note: Allow 6" space at left, back and right side for ventilation and utility connections.



Specifications

Model Number	Condenser Unit	Storage Capacity lb/kg	Basic Electrical Volts/Hz/Phase	Max. Fuse Size or HACR Circuit Breaker (amps)	Circuit Wires	Min. Circuit Ampacity	Energy Consumption kWh/100 lb (45.4 kg) 90°F(32°C)/70°F(21°C)	Water Usage Gallons/100 lb (liters/45.4 kg)	
								Potable 90°F(32°C)/70°F(21°C)	Condenser 90°F(32°C)/70°F(21°C)
MDT4F12A-1	Air	12/5	115/60/1	20	2	15.1	5.6	12/45.5	-

All units are stainless steel. Not designed for outdoor installations.

Refrigerant: R-134a

All Models

Dimensions (W x D x H):

Unit:

14" x 23.75" x 34.31"
(35.6 x 60.3 x 87.1 cm)

Shipping Carton:

17" x 26" x 39.75"
(43.2 x 66 x 101 cm)

Shipping Weight:

155 lb / 70 kg

Accessories

Model Number	Description
KWB4	Wall Mounting Kit for MDT3F12, MDT4F12
KPC-MDT	Portion Control Kit for MDT3, MDT4, MDT5 & MDT6
KTPS-MDT	Tamper Proof Screw Kit (including tool) to convert 1 MDT Dispenser

* Scotsman recommends all ice machines have water filtration. See Scotsman Sanitation Matrix for details.

Operating Requirements

	Minimum	Maximum
Air Temperatures	50°F (10°C)	100°F (38°C)
Water Temperatures	40°F (4.4°C)	100°F (38°C)
Remote Cond. Temps	-20°F (-29°C)	120°F (49°C)
Water Pressures	20 PSIG (1.4 bar)	80 PSIG (5.5 bar)
Electrical Voltage	-5%	+10%

Specifications and design are subject to change without notice.

Scotsman Ice Systems • 775 Corporate Woods Parkway • Vernon Hills, IL 60061

1-800-SCOTSMAN

Fax: 847-913-9844

E-mail: customer.relations@scotsman-ice.com

www.scotsman-ice.com

© 2012 Scotsman Ice Systems.

SIS-SS-DIS-MDT4F12 06-12

MDT4F12 – TouchFree® Ice Machine / Dispenser