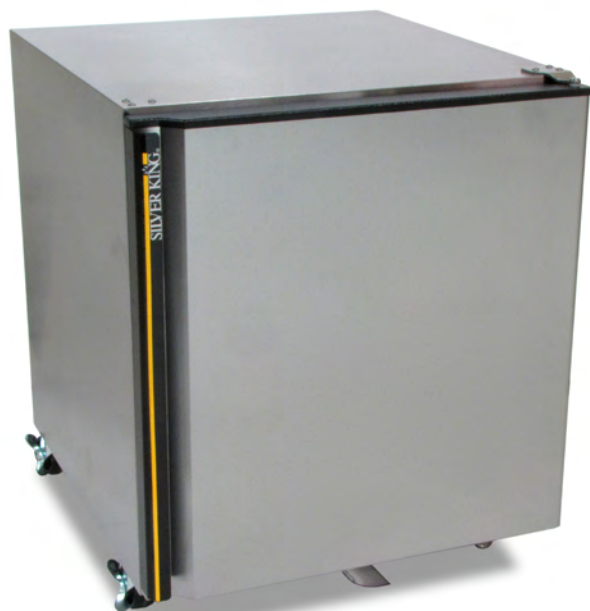




27" Refrigerator

MODEL SKR27A/C2

MODEL SKR27AD/C2



MODEL	LENGTH	DEPTH	HEIGHT	CAPACITY	COMPRESSOR	AMPS	WEIGHT
SKR27A/C2	27"	29-1/2"	32-1/8"	6 1/2 cu. ft.	1/4 hp	2.7	165 lbs.
SKR27AD/C2	27"	29-3/8"	32-1/8"	2 Full size pans-6" deep	1/4 hp	2.7	210 lbs.

EXTERIOR	Stainless steel. Galvanized back and bottom.
INTERIOR	Aluminum, Coved corners and finished edges for ease of cleaning.
INSULATION	Environmentally friendly polyurethane foamed-in-place for maximum insulation, strength and durability.
CASTERS	Supplied with four casters (two with locks).
REFRIGERATION	CFC-free, 134A refrigerant, hermetically sealed, high efficiency, self contained refrigeration system automatic defrost and forced air circulation. Adjustable temperature control mounted in front for easy access. Automatic condensate evaporator means no plumbing or floor drains.
DOOR GASKETS	Santo Prene material lasts four times industry standard.
ELECTRICAL	Standard 115 volt, 60 Hz, single phase. 8 foot 3-wire power cord with NEMA 5-15 plug.
LISTINGS	ETL Safety (U.S. and Canada), ETL Sanitation.
WARRANTY	1 year parts and labor, five year warranty on compressor.



27" Refrigerator

MODEL SKR27A/C2

MODEL SKR27AD/C2

