



SPECIFICATIONS:

Shall be a Model _____, stainless steel steam coil operated stainless steel steam boiler at 15 psi mounted in a cabinet base:

- 24" (610 mm) wide
- 36" (914 mm) wide

Polished stainless steel cabinet base shall be of modular design to match other Crown cooking equipment, and equipped with 6" (152 mm) stainless steel legs and adjustable bullet feet, stainless steel counter top, and hinged doors with magnetic latches.

Unit shall include as standard the following: automatic drain and water level control, cold water condenser, pressure gauge, water gauge glass, pressure control, steam trap, safety relief valve and cathodic descaler.

Steam boiler shall be National Board Registered, and shall be suitable for installation tight against a non-combustible wall. Steam boiler shall be ASME constructed for 15 pound operation.

Steam boiler shall be automatically filled with hot water and brought to pressure when heat and water switches are turned on and automatically drained under pressure when switches are turned off. Cold water condenser shall automatically condense exhausted steam into water before releasing it to drain.

Before connecting water to this unit, have water supply analyzed to make sure hardness is no greater than 2.0 grains and pH no greater than 7.5. Water which fails to meet these standards should be treated by installation of a water conditioner. EQUIPMENT FAILURE CAUSED BY INADEQUATE WATER QUALITY IS NOT COVERED UNDER WARRANTY.

Model	Capacity
CSC-24	24" (610 mm) wide by 33" (838 mm)
CSC-36	36" (914 mm) wide by 33" (838 mm)

OPERATION SHALL BE BY:

Unit equipped for operation with minimum incoming pressure of 20 psi (1.4 kg/cm²) and maximum incoming pressure of 50 psi (3.5 kg/cm²) producing a minimum output of 2.6 BHP and 85 pounds of steam per hour.






OPTIONAL ITEMS AT EXTRA COST:

- Pressure reducing valve
Specify requirements
- Condensate return kit

Job _____
Item# _____

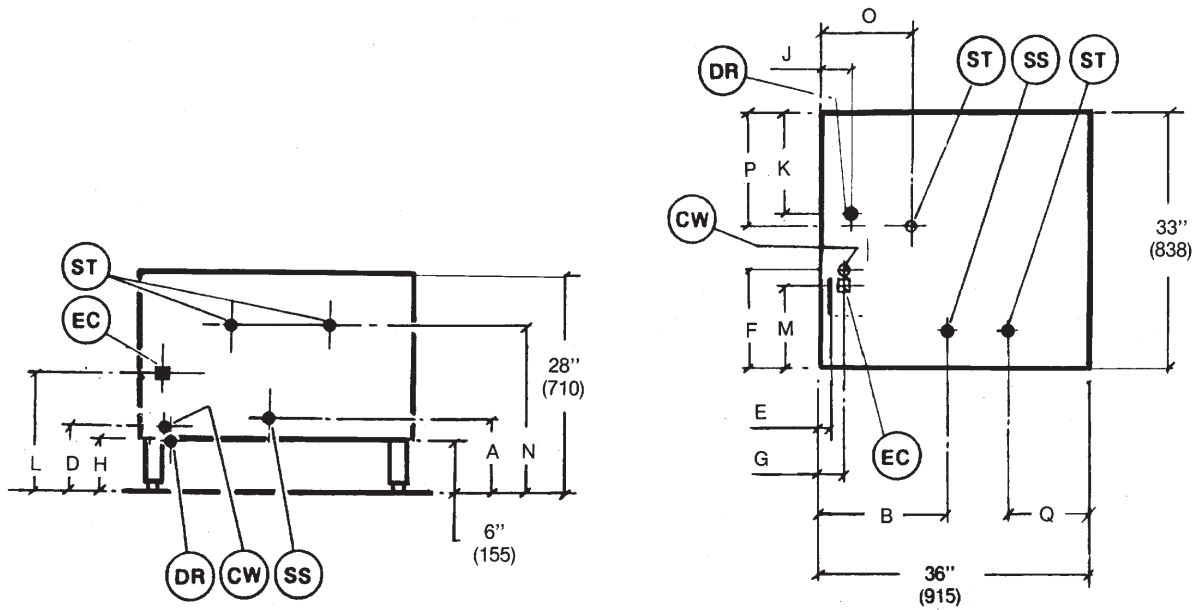


SERVICE CONNECTIONS

-  – COLD WATER: 3/8" (10 mm) copper tube.
-  – Electrical connection 120 Volts, 60 Hertz single phase with grounding wire required unless otherwise specified.
-  – Steam take-off locations to supply steam to adjacent units.
-  – Boiler and compartment drain approximately 2" (51 mm) diameter. Provide open air gap type drain.
-  – 3/4" (19 mm) female pipe connection for steam supply at 30-50 psi.

DIMENSIONS

MODEL	CAPACITY	UNITS	A	B	C	D	E	F	G	H	J	K	L	M	N	O	P	Q
CSC-24 & CSC-36	24" (610 mm) x 33" (838 mm)	inches	9	17	5	7	2	13	3	5.75	4	11	15	11	23	11	12	10
	26" (914 mm) x 33" (838 mm)	mm	229	689	127	179	51	330	76	146	102	279	381	279	584	279	305	254



IN (mm)

01/02

**INTENDED FOR COMMERCIAL USE ONLY.
NOT FOR HOUSEHOLD USE.**