

SPECIFICATIONS:

Shall be a Southbend model GMT-10-10,

consisting of two direct connected steam, tilting kettles, two 10 gallon (38 liters). A double wall kettle interior shall form a steam jacket around the lower 2/3 of the kettle. The bottom of the kettle shall be of hemispherical design for superior heat circulation. The kettle interior shall be of 316 stainless steel for high acid content products. The stainless steel mounting legs shall have the steam supply and condensate within the legs and the right leg fitted with a steam control valve for the kettle. Each kettle shall be fitted with a tilt handle and heat resistant knob, allowing the kettles to be tilted forward past 90° for complete emptying.

The kettles shall be mounted on a cabinet base with full perimeter angle frame, reinforced counter, hot and cold water faucet with controls valves 3" (76 mm) deep sinks with drain, grates and splash guard, hinged doors with magnetic catches, removable side panels and 6" (152 mm) stainless steel legs fitted with adjustable bullet feet on front and flanged adjustable feet on rear for securing to the floor, all #4 stainless steel exterior with aluminized steel back. Boiler controls shall include automatic water level control, automatic blowdown, pressure gauge, water gauge glass, operating pressure control, safety high-limit pressure control, safety relief valve, cathodic protector, On/Off switch with indicator light, and electronic ignition. Steam manifolds concealed within cabinet are fitted with a safety relief valve and steam trap for each kettle.

MODEL	CAPACITY
GMT-10-10	2 X10 gallon kettles (38 liters)

OPERATION SHALL BE BY:

Gas operated 15 psi (103 kPa) steam boiler for operation on 115 VAC, 1 phase, 50/60 Hz rated at 140,000 BTU.

- Natural Gas
- LP Gas

OPTIONAL ITEMS AT EXTRA COST:

- 200,000 BTU boiler
- 250,000 BTU boiler
- 300,000 BTU boiler
- 208-240 VAC operation (specify voltage)
- Stainless steel rear panel
- Stainless steel frame
- Etched Gallon or Liter markings

ACCESSORIES:

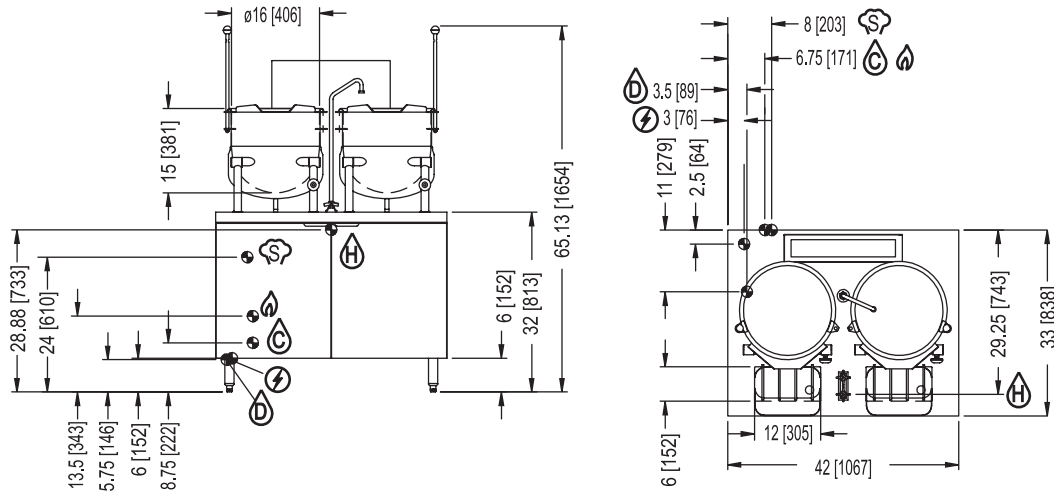
- Correctional package
- Front flanged feet
- Spray and rinse assembly
- Steam take-off kit
- Water in "Y" strainer

Job _____
Item# _____



Models: GMT-10-10

MODEL	SHIPPING WEIGHT	MIN. CLEARANCE
GMT-10-10	820 lbs. [372 kg.]	SIDES 3 [76 mm] BACK 6 [152 mm]



DIMENSIONS ARE IN INCHES [MM]

REAR FLANGED FOOT DETAIL
2 EQUALLY SPACED
Ø7/16" [11mm] HOLES
ON 2.5 [63] B.C.

NOTE: SPLASH GUARD NOT SHOWN ON FRONT VIEW

SERVICE CONNECTIONS

- ⚡ – ELECTRICAL CONNECTION: 1/2" (13 mm) conduit connection to controls. 120 VAC-60Hz-1PH. 2 Amps per compartment or as specified on data plate.
- Ⓒ – CONDENSATE COLD WATER: 1/2" (13 mm) NPT at 25-50 PSI (170-345 kPa) (OPTIONAL)
- Ⓐ – GAS CONNECTION: 3/4" (19 mm) IPS supply line required.
- Ⓐ – STEAM TAKE-OFF CONNECTION: 3/4" (19 mm) IPS optional to operate adjacent equipment.
- Ⓗ – HOT WATER: 3/8" (10 mm) O.D. tubing at 25-50 PSI (170-345 kPa).
- Ⓓ – DRAIN: 2" (51 mm) IPS piped to open floor drain. No solid connection.

GAS SUPPLY

BTU/HOUR	kW/HOUR	MINIMUM INLET PRESSURE:	
		NATURAL	PROPANE
200,000	58.6	4" W.C. Static to unit	11" W.C. Static to unit
250,000	73.3		
300,000	87.9		

WATER QUALITY STATEMENT

Water quality is the major factor affecting the performance of your appliance. If you are unsure of water quality, consult a local water treatment specialist and have the water analyzed. Your water supply must be within these general guidelines:

- Total dissolved solidsLess than 60 PPM
- Total alkalinityLess than 20 PPM
- Silica.....Less than 13 PPM
- ChlorineLess than 1.5 PPM
- pH Factor7.0 - 8.5

Water which fails to meet these standards should be treated by installation of water conditioner.

FAILURE OR MALFUNCTION OF THIS APPLIANCE DUE TO POOR WATER QUALITY IS NOT COVERED UNDER WARRANTY. CONTACT SOUTHBEND FOR WATER QUALITY SOLUTIONS.

**INTENDED FOR COMMERCIAL USE ONLY.
NOT FOR HOUSEHOLD USE.**



1100 Old Honeycutt Road, Fuquay-Varina, NC 27526
(919) 762-1000 www.southbendnc.com