



GAS STEAM KETTLE STATIONARY



SPECIFICATIONS:

Shall be a Southbend Model _____, gas fired, self-contained, fully insulated steam jacketed kettle, ASME Code stamped, National Board Registered, AGA and CGA design certified, NSF approved. The unit comes standard with a spring assisted cover. The kettle shall be constructed with an exterior of type 304 stainless steel, #4 sanitary finish and four 6" stainless steel adjustable legs. The interior kettle liner shall be a one piece welded construction made with type 304 stainless steel with #4 sanitary finish, 2/3 jacketed and shall be furnished with a 2" tangent draw off valve as standard. The recessed control panel is located on the front side of the unit in full view of the operator and is easy to use. Standard controls include electronic ignition, direct immersion thermostat, water sight glass, cooking light, pressure gauge and low water indicator light. Safety features shall include a low water cut off, pressure relief valve, pressure switch and a safety gas shutoff valve.

A double wall kettle interior shall form a steam jacket around the lower 2/3 of the kettle. The bottom of the kettle shall be of hemispherical design for superior heat circulation.

Convenience features shall include 2" (50 mm) sanitary draw-off valve with a heat resistant handle.

MODEL	CAPACITY	
KSLG-80	80 Gallon	303 Liter
KSLG-100	100 Gallon	379 Liter

OPERATION SHALL BE BY:

- ☐ Natural Gas
- ☐ L.P. Gas

For operation on 115 VAC, 1 phase 50/60 Hz, A.S.M.E. code stamped for operation up to 35 psi (241 kPa). The steam kettle temperature ranges shall be between 165°F to 265°F (74°C to 130°C).

OPTIONAL ITEMS AT EXTRA COST:

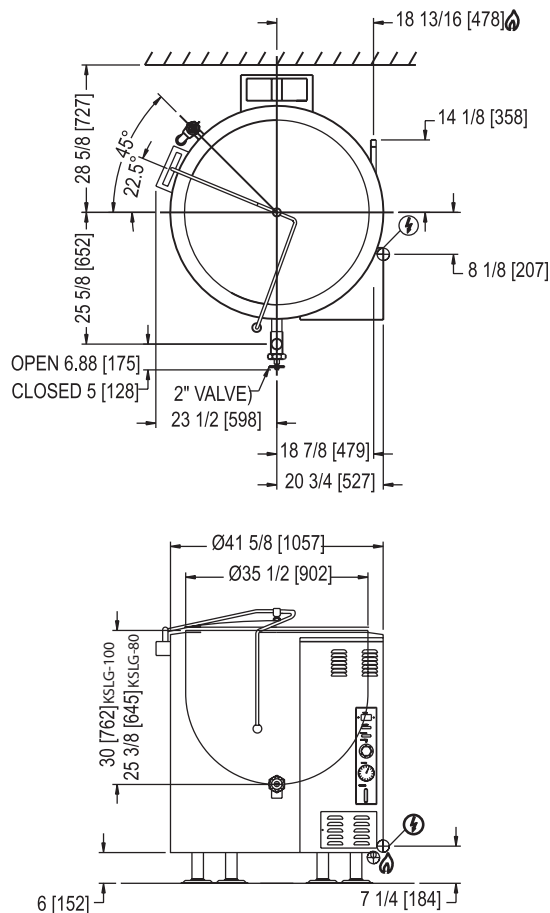
- ☐ 316 stainless steel liner for interior
- ☐ 208-240 VAC operation (specify voltage)
- ☐ 3" (76 mm) draw-off valve (TVT-3)
- ☐ 2" (50 mm) dairy valve (DDO-2T)
- ☐ 3" (76 mm) dairy valve (DDO-3T)
- ☐ Etched gallon markings (GM-)
- ☐ Etched liter markings (LM-)
- ☐ Correctional Package

ACCESSORIES:

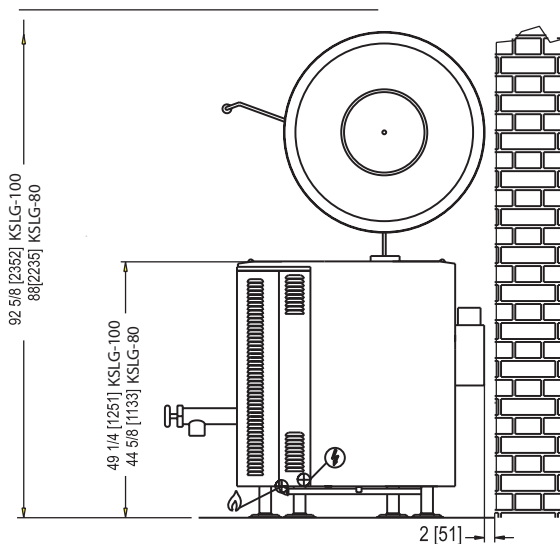
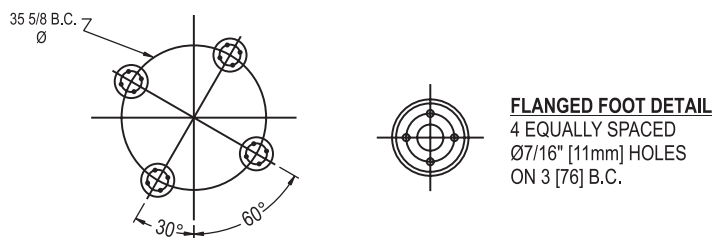
- ☐ Single pantry faucet with swing spout, SF-12
- ☐ Double pantry faucet with swing spout, DF-12
- ☐ Stainless steel tri basket, (TBA-)
- ☐ Perforated strainer for draw-off valve (TPS-)
- ☐ Solid disc for draw-off valve (TSS-)
- ☐ Graduated measuring strip (CMS-)
- ☐ Strainer hook (SH-)
- ☐ Draw-off valve hose kit (DVHK-2)
- ☐ Faucet Bracket
- ☐ Casters



☐ KSLG-80 ☐ KSLG-100



MODEL	SHIPPING WEIGHT
KSLG-80	950 lbs. [430 kg]
KSLG-100	1100 lbs. [498 kg]



DIMENSIONS ARE IN INCHES [MM]

SERVICE CONNECTIONS

- 🔥 – Supply gas through 3/4" pipe. A gas shut-off valve must be installed in supply piping convenient and adjacent to appliance
- ⚡ – Unless other wise specified, Field Wire Electrical Connection to be 120 Volts, 60 Hertz, single phase with grounding wire. Unit furnished with 6' cord and 3 prong plug. Total maximum amps 2.0.

MODEL	GAS SUPPLY				MINIMUM CLEARANCE *	
	BTU/HR.	KW/HR.	SUPPLY PIPE PRESSURE (W.C.)			
KSLG-80	150,000	44.0	Natural 6"-14" (152-355 mm) Propane 11"-14" (279-355 mm)		Sides	6" [152 mm]
KSLG-100	150,000	44.0			Back	2" [51 mm]

* For use on non-combustible floors only.

**INTENDED FOR COMMERCIAL USE ONLY.
NOT FOR HOUSEHOLD USE.**



1100 Old Honeycutt Road, Fuquay-Varina, NC 27526
(919) 762-1000 www.southbendnc.com