



7-PS-62

SPACE SAVER



7-PS-63

See page A-7 for more
Space Saver Units



7-PS-30



7-PS-78

Keyhole Bracket for
easier installation
and greater stability.



7-PS-82

Item #: _____ **Qty #:** _____
Model #: _____
Project #: _____

FEATURES:

One piece **Deep Drawn** sink bowl design.

7-PS-30 Sink bowl is 16" x 14" x 6".

7-PS-78 Sink bowl is 16" x 20" x 6".

7-PS-62 & 7-PS-82 Sink bowl is 10" x 14" x 5".

7-PS-63 Sink bowl is 9" x 9" x 5".

Keyhole wall mount bracket.

Stainless steel basket drain 1-1/2" IPS.

Knee valve operated faucet provides true hands-free operation.

All sink bowls have a large liberal radii with a minimum dimension of 2" and are rectangular in design for increased capacity.

Apron conceals plumbing on all three sides.

"Hands Free" splash mounted gooseneck faucet furnished with aerator.

Specific Features:

7-PS-82 has Towel Dispenser with hinged towel box. Unit uses standard C-fold towels. Liquid soap dispenser also included.

7-PS-63 "Hands Free" splash mounted 6" "D" Spout faucet furnished with aerator.

CONSTRUCTION:

All TIG welded.

Welded areas blended to match adjacent surfaces and to a satin finish.

Die formed Countertop Edge with a 3/8" No-Drip offset.

One sheet of stainless steel - No Seams.

MATERIAL:

Heavy gauge type 304 series stainless steel.

Wall mounting bracket is galvanized steel and of offset design.

All fittings are brass / chrome plated unless otherwise indicated.

MECHANICAL:

Spout supply is 1/2" IPS male thread.

Knee Valve is barrel type and is activated by pedal.

(Contractor on site must connect faucet to knee operated valves.)

**Standard Faucet conforms to NSF 61 Standard 9.
Faucets Are AB1953 Lead Free Compliant.**

For Replacement Faucets & Upgrades, Drains & Accessories
visit our website at www.advancetabco.com

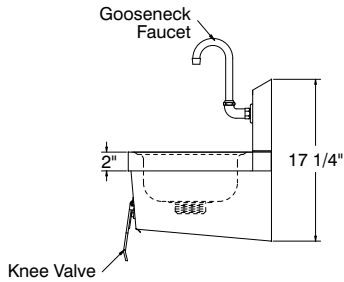
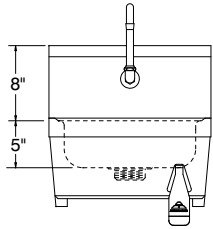
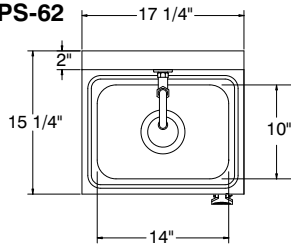
DIMENSIONS and SPECIFICATIONS

TOL Overall: ± .500" Interior: ± .250"

FITTINGS SUPPLIED AS SHOWN

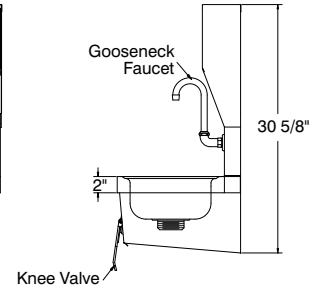
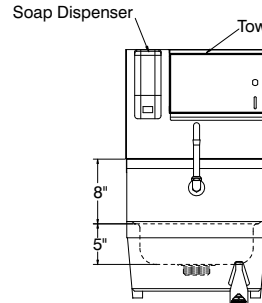
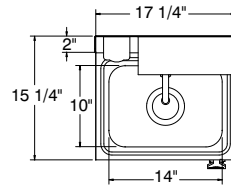
ALL DIMENSIONS ARE TYPICAL

7-PS-62



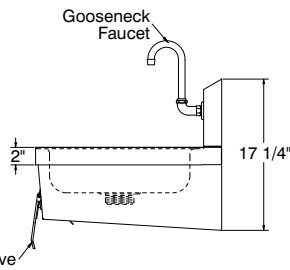
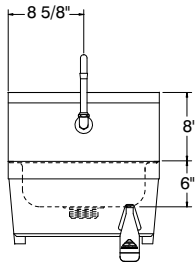
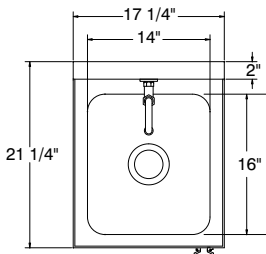
25 lbs.

7-PS-82



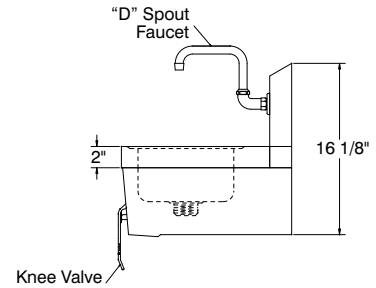
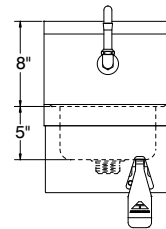
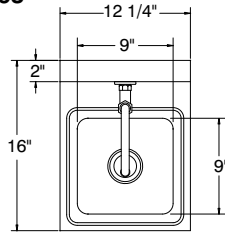
38 lbs.

7-PS-30



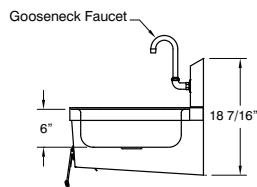
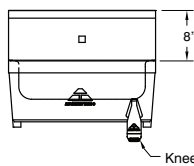
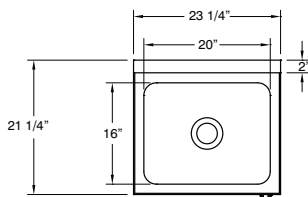
33 lbs.

7-PS-63



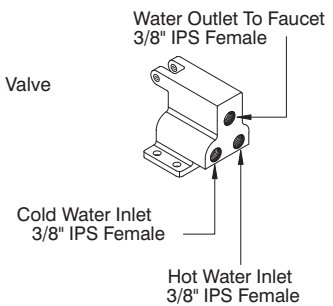
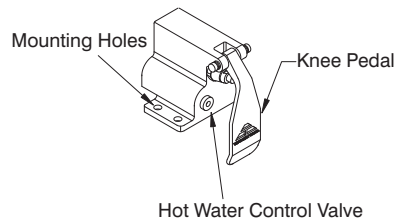
20 lbs.

7-PS-78



40 lbs.

KNEE VALVE DETAIL



3/8" IPS FEMALE

