

**PROJECT NAME:** \_\_\_\_\_

**LOCATION:** \_\_\_\_\_

**SPECIFIER ITEM NO.** \_\_\_\_\_ **QTY:** \_\_\_\_\_

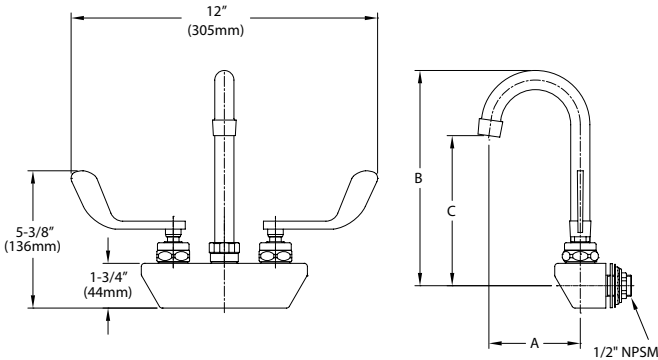
**ENCORE PART NO.** \_\_\_\_\_

Encore® Low Lead 4" (102mm) Wall Mount Faucet with 3-1/2" (89mm) Adjustable Gooseneck Spout, 0.5gpm PCA Spray Aerator and 4" (102mm) Wrist Blade Handles

## KL45-4x00-SC4 Series

KL45-4000-SC4 3" Spout, Compression Valves

KL45-4100-SC4 3" Spout, Ceramic Valves



Dimensions shown in inches (mm) are for reference only and are subject to change.

1/2" NPSM Male Inlets

Operating Temperature: 40-180°F (5-83°C)

Operating Pressure: 15-125psi

Note: 1-1/8" (29mm) holes for backsplash are recommended to accommodate 1/2" supply nipples

Approximate shipping weight - 5 lbs

Warranty - 2 years parts

Solid heavy duty low lead cast body is specification and commercial quality for hand sinks.

### Commercial Quality Features

- 3-1/2" (89mm) Adjustable gooseneck spout design
- ADA-compliant 4" (102mm) wrist blade handles
- Built-in check valves to prevent cross-flow and back-flow
- Leak proof double O-ring spout design

### SANIGUARD® Product Protection

- Permanently incorporated on all touch points of Encore plumbing fixtures
- Inorganic, silver ion technology inhibits growth of common bacteria, yeasts, mold and fungi, minimizes cross-contamination

### SPECIFICATIONS:

Low Lead Wall Mount Faucet to be Encore KL45-4000-SC4 Series in the following configuration:

\_\_\_\_\_ KL45-4000-SC4 3" Spout, Compression Valves

\_\_\_\_\_ KL45-4100-SC4 3" Spout, Ceramic Valves

Faucet body to be constructed of polished chrome plated brass with total lead content less than 0.25% by weighted average. Handles to be 4" wrist blade and incorporated with SANIGUARD treatment. Supply inlets to be 4" on center. Valves to be 1/4-turn with integral check valve to prevent cross-flow and back-flow. Spout to be 3-1/2" adjustable gooseneck style with leak proof double O-ring seal design. Color coded temperature indexes shall meet international standards. 0.5gpm PCA spray aerator @ 60psi standard with full flow stream bubbler screen spout tip.

Model No.	A	B	C
KL45-4000-SC4	3-1/2" (89mm)	8-3/16" (208mm)	5-15/16" (151mm)
KL45-4100-SC4	3-1/2" (89mm)	8-3/16" (208mm)	5-15/16" (151mm)

For a complete list of available options for KL45-4000 Series, see product configurator on reverse.

COMPLIES WITH:  
THE FEDERAL "REDUCTION OF LEAD  
IN DRINKING WATER ACT" -  
2011 - US SENATE BILL NO. S.3874  
NSF/ANSI 61/9, ANNEX G



## Faucet Configuration for KL45-4x00-SC4 Series

