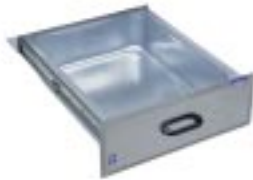


Duke Specifications

F.O.B. Sedalia, Missouri 65301



"Your Solutions Partner"



176 - Deluxe Drawer



185 - Standard Drawer



201 - Spice Bins
1056 - Overhead Shelf



1156-18 - Wall Shelf



5027 - Ingredient Bin



731 - Tier of Drawers

AGENCY LISTING:



DUKE MANUFACTURING CO.
P. O. Box 5426
St. Louis, MO 63147-0230

800.735.3853 Toll Free
314.231.1130 In Missouri
314.231.5074 Fax
www.dukemfg.com

PROJECT INFORMATION:

PROJECT: _____
ITEM: _____
QUANTITY: _____

MODEL:

**Aerohot Worktables
Accessories**

- 176/177 Deluxe drawer
- 185/186 Standard drawer
- 201 Spice bin
- 731/732 Tiers of drawers
- 5027 Portable ingredient bin
- 1056 Single deck overhead shelves
- 1156 Wall shelves

DRAWERS - 176, 177, 185, 186:

- **Deluxe:** Removable 15" x 20" x 5" deep removable liner - galv. or S/S
- **Deluxe:** Ball-bearing wheels. Heavy gauge stainless front w/handle
- **Standard:** Die-drawn, fully-coved heavy gauge galvanized or stainless
- **Standard:** 15" x 20" x 5" deep; roller slides; heavy gauge S/S front

SPICE BIN - 201:

- Stainless steel, die-drawn, fully coved
- Mounted on ball-bearing wheels, easily removable
- Equipped with name holders
- Requires 7-1/2" space along underside of shelf

TIERS OF DRAWERS - 731, 732:

- 15" x 20" x 5" deep die-drawn, coved liner of heavy gauge galv. or S/S
- Set of three drawers for each tier, set in S/S frame mounted on ball-bearing wheels
- Each drawer removable
- Tier without top, suspended from table top
- Enclosure or housing of heavy gauge 300 Series stainless steel
- Dimensions of housing: 23" x 20" x 22-1/2" deep

WALL SHELF - 1156:

- 18, 16 or 14 gauge stainless steel (specify)
- Mounted on 14 gauge stainless steel brackets
- 10" wide, back and ends flanged up 1" with front flanged down 1"
- Special widths available

OVERHEAD SHELF - 1056:

- 18, 16 or 14 gauge stainless steel (specify)
- Special heights available (specify)
- Special widths available - standard width of 10" (specify)
- Mounted on 1" diameter stainless steel tubular supports
- Standard height of 18" (double deck: top shelf 8" above lower shelf)

INGREDIENT BIN - 5027:

- Rubbermaid® brand
- 22" x 22" x 23" high
- 28 gallon capacity
- White seamless Trimeld® - rounded corners
- (4) extra -wide 3" diameter casters - 2 fixed, 2 swivel
- Clear Carb-X® lid - slides and flips up



AEROHOT WORKTABLES

ACCESSORIES

- 176/177** Deluxe drawer
- 185/186** Standard drawer
- 201** Spice bin
- 731/732** Tiers of drawers
- 5027** Portable ingredient bin
- 1056** Single deck overhead shelves
- 1156** Wall shelves

DIMENSIONS:

Spice Bin (1/6 size pan 4" deep) 7-1/2" space needed for each bin.

No. 201 Spice Bin - Weight approximately 2 lbs (.9 kg) per bin.

Standard Drawer - On Roller Slides

Freight Class - 55

Model	Description
185	Stainless Steel Drawer with Stainless Steel Face Plate
186	Galvanized Drawer with Stainless Steel Face Plate

Weight - Stainless Steel Drawer - 12 lbs. (5.5 kg) Galvanized Drawer - 12 lbs. (5.5 kg).

3 drawers can be added to tables 72" or longer. When drawers are ordered separately specify width of table (24", 30", 36").

Deluxe Drawer - On Ball-Bearing Roller Slides

Freight Class - 55

Model	Description
176	Stainless Steel Front Galvanized Liner
177	Stainless Steel Front Stainless Steel Liner

Weight: Approximately 21 lbs. (9.6 kg)

When drawers are ordered separately specify width of table (24", 30", 36"). For lock and keys add "LK" to drawer model number.

Tiers of Drawers - Without Top - Advise position under top. Available on 30" wide tables only. Freight Class - 55

Model	Description
731	S/S Housing and S/S Drawers
732	S/S Housing and Galv. Drawers

When ordering specify Center, Left or Right position. Weight approximately 100 lbs. (45.5 kg).

Portable Ingredient Bin

Freight Class - 100

Model	Description	Length		Width		Height		Weight	
		in.	cm	in.	cm	in.	cm	lbs.	kg
5027	Trimeld Body, 3" Casters (3.8 cu. ft./28 gal.)	22	55.9	22	55.9	23	58.4	27	12.3

Replacement cover with hinge **5027-LID**.

Single Deck Overhead Shelves

Freight Class - 70

Model	Description	Width		Length (inches to cm)									
		in.	cm	36"	48"	60"	72"	84"	96"	108"	120"	132"	144"
1056	18 gauge	10	25.4	91.4	121.9	152.4	182.9	213.4	243.8	274.3	304.8	335.3	365.8
1056	16 gauge	10	25.4	91.4	121.9	152.4	182.9	213.4	243.8	274.3	304.8	335.3	365.8
1056	14 gauge	10	25.4	91.4	121.9	152.4	182.9	213.4	243.8	274.3	304.8	335.3	365.8

For wider shelves, odd length shelves or double deck shelves see Price Book.

NOTE: Overshelves will be placed across back of table unless otherwise specified.

Not recommended for use on Wet Bath Units. Weight approximately 5 lbs. (2.3 kg per square foot).

Wall Shelves

Freight Class - 70

Model	Description	Width		Length (inches to cm)									
		in.	cm	36"	48"	60"	72"	84"	96"	108"	120"	132"	144"
1156	18 gauge	10	25.4	91.4	121.9	152.4	182.9	213.4	243.8	274.3	304.8	335.3	365.8
1156	16 gauge	10	25.4	91.4	121.9	152.4	182.9	213.4	243.8	274.3	304.8	335.3	365.8
1156	14 gauge	10	25.4	91.4	121.9	152.4	182.9	213.4	243.8	274.3	304.8	335.3	365.8

For wider or odd length shelves see Price Book. Weight approximately 5 lbs. (2.3 kg) per square foot.



DUKE MANUFACTURING CO.
P. O. Box 5426
St. Louis, MO 63147-0230

800.735.3853 Toll Free
314.231.1130 In Missouri
314.231.5074 Fax
www.dukemfg.com