



"Your Solutions Partner"

Specifications

F.O.B Sedalia, Missouri 65301



TUS-46

OPTIONS:

- 14 gauge tops
- Internal Locking device
- Double-service drain trough
- Recessed top in lieu of flat top
- Partial length drip trough
- Glass water filler - self closing - **TUS-OP1**
- Sliding doors - **TS329**
- Hinged doors
- Rubber corner bumpers - **TMOD-8**
- Solid or tubular tray slides - **TS3BTS-HD/FX, TSSOLID-HD/FX**
- Pusher Bar - **TMOD-7**
- 6" adjustable stainless steel legs - **TMOD-15**
- Veneered plastic laminate panels on body - **TSS-xP**
- Powder coat paint colors
- Cutouts in top of shelves
- Electric outlet - **TE-OP1, TE-OP2, TE-OP3, TE-OP4**
- J-hook to hold cord and plug
- 6" or 8" cord and plug
- Stainless steel kickplates - **TMOD-2**
- Wood, stainless steel or poly cutting boards

AGENCY LISTING:



DUKE MANUFACTURING CO.
2305 N. Broadway
St. Louis, MO 63102

800.735.3853 Toll Free
314.231.1130 In Missouri
314.231.5074 Fax
www.dukemfg.com

Approval Stamp(s):

PRODUCT INFORMATION:

PROJECT: _____
ITEM: _____
QUANTITY: _____

MODEL:

Thurmaduke Serving Systems Urn Stand Units

- **TUS-32** 32" length unit/.26" length drip trough
- **TUS-46** 46" length unit/40" length drip trough
- **TUS-60** 60" length unit/54" length drip trough
- **TUS-74** 74" length unit/68" length drip trough

TOP:

- 16 gauge, 300 Series stainless steel
- Vinyl foam tape for sound-deadening
- 4" wide drain trough, 6" shorter than top
- 1" drain
- Stainless steel anti-splash grid, removable

BODY:

- Choice of (12) powder coat paint colors (must choose one):
 - #217105 - Designer White
 - #217150 - Orange Red
 - #217107 - Hollyberry Red
 - #217127 - Fence Green
 - #217102 - Duke Silver
 - #217101 - Semi-Gloss Black
 - #217103 - Natural Almond
 - #217154 - Racing Red
 - #217120 - Sky Blue
 - #217152 - Stone Gray
 - #217113 - Brown Kickplate
 - #217125 - Textured Black
- Stainless steel body
 - Operator's side open to bottom shelf
 - Side opposite operator and ends fully enclosed
 - Intermediate and bottom shelves to match body
 - NSF approved polyurethane casters, two with locks
 - 7" high stainless steel rail on operator's side

SHORT FORM SPECIFICATIONS:

Thurmaduke Serving Systems - Urn Stand Units. Top shall be constructed of 16 gauge, 300 Series stainless steel with edges flanged down 2" at 90° on all four sides and flush with body on ends. Vinyl foam tape to be used between top and body for sound-deadening. A 4" wide drain trough with 1" drain and stainless steel anti-splash grid in top shall be 6" shorter than length of unit. Body to be free standing and formed of heavy gauge steel with specified powder coat paint color or 300 Series stainless steel. Operator's side of unit to be open to bottom shelf with corners of end panels die-formed into channels. Side opposite operator and ends fully enclosed. Bottom and intermediate shelf edges shall be flanged down on all four sides, with intermediate shelf edges flanged down on front sides and up at ends. 9-1/2" clearance between shelves. Unit shall be mounted on NSF approved 5" diameter polyurethane casters, all swivel, two with locks. Must be "PG" to model number for Paint Grip Bodies. "SS" for Stainless steel bodies.

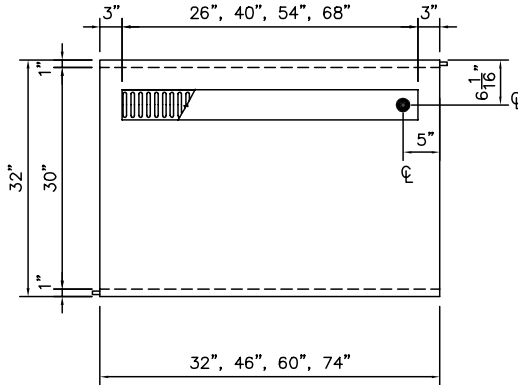
SPECIFY LOCATION OF DRIP TROUGH.



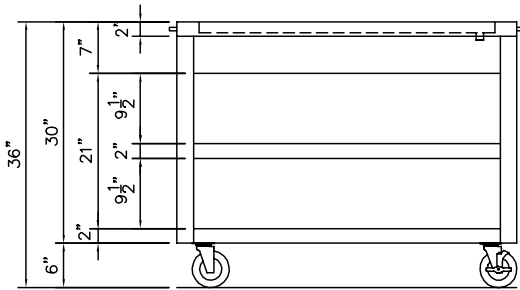
**Thurmaduke Serving Systems
Urn Stand Unit**

- TUS-32 32" length unit/26" length drip trough
- TUS-46 46" length unit/40" length drip trough
- TUS-60 60" length unit/54" length drip trough
- TUS-74 74" length unit/68" length drip trough

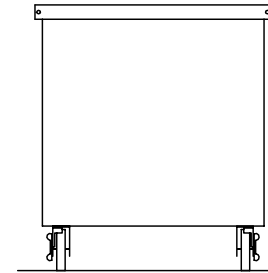
LEGEND	
■	- Drain Location - Specify location of drain.



TOP VIEW



FRONT VIEW



RIGHT SIDE VIEW

DIMENSIONS:

FREIGHT CLASS: 150

Model	Length		Width		Height		Cube ft. crated	Weight		Drip Trough			
	in.	cm	in.	cm	in.	cm		lbs.	kg	Length		Width	
										in.	cm	in.	cm
TUS-32	32	81.3	32	81.3	36	91.4	34.8	275	125.0	26	66.0	4	10.2
TUS-46	46	116.8	32	81.3	36	91.4	47.7	325	147.7	40	101.6	4	10.2
TUS-60	60	152.4	32	81.3	36	91.4	60.5	375	170.5	54	137.2	4	10.2
TUS-74	74	188.0	32	81.3	36	91.4	73.3	425	193.2	68	172.7	4	10.2

DUKE MANUFACTURING CO.
2305 N. Broadway
St. Louis, MO 63102



"Your Solutions Partner"

800.735.3853 Toll Free
314.231.1130 In Missouri
314.231.5074 Fax
www.dukemfg.com

Specifications subject to change

06/08
Printed in U.S.A
© 2008, Duke Manufacturing Co.