

**Product Specifications**

**Refrigerated Self-Service Case - 32"D - Top Mount Compressor**



MODEL SHOWN: B3632TM

Conforms to NSF STD 7  
**TYPE II**

	Lengths include end panels
<input type="checkbox"/> B3632TM	36-5/8"L x 32-1/4"D x 82-1/4"H
<input type="checkbox"/> B4732TM	47-5/8"L x 32-1/4"D x 82-1/4"H
<input type="checkbox"/> B5932TM	59-5/8"L x 32-1/4"D x 82-1/4"H
<input type="checkbox"/> B7132TM	71-5/8"L x 32-1/4"D x 82-1/4"H
<input type="checkbox"/> B8832TM	88-3/8"L x 32-1/4"D x 82-1/4"H

**STANDARD FEATURES**

- Breeze~E (Type-II) w/ EnergyWise s/c refrigeration
- Compressor air intake and discharge at top. Top of unit must remain completely open. (minimum 18" clearance above needed for compressor air discharge)
- Condensate pan (self-contained refrig. only)
- Flat upper front panel & header
- Full end panel w/mirror interior (metal edge matches interior color)
- Integrated average product temperature of 40°F or less
- One year parts & labor; 5 year compressor warranty
- Removable deck pans provide complete access to evaporator coil & refrigeration connections
- Shelving removable and adjustable on 1" centers
- T-8 top light

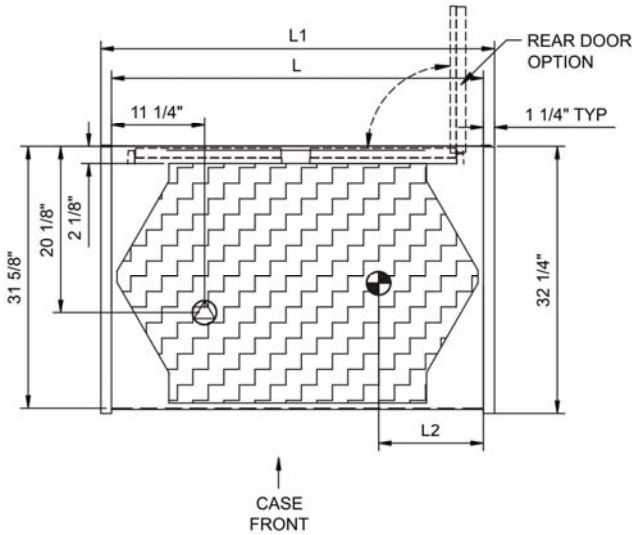
Features	Standard	Options
<b>EXTERIOR COLOR</b>	<input type="checkbox"/> Laminated (non-premium) Confirm pattern/grain direction	<input type="checkbox"/> Laminated (premium) Confirm pattern/grain direction <input type="checkbox"/> Stainless steel (includes lower front panel)
<b>INTERIOR COLOR</b>	<input type="checkbox"/> Black	<input type="checkbox"/> Stainless steel
<b>LOWER FRONT PANEL COLOR</b>	<input type="checkbox"/> Painted - Black	<input type="checkbox"/> Stainless steel (w/stainless ext. only)
<b>TRIM COLOR</b>	<input type="checkbox"/> Black	<input type="checkbox"/> Stainless steel (w/stainless int. only)
<b>BASE</b>	<input type="checkbox"/> Casters (n/a with remote)	<input type="checkbox"/> Levelers <input type="checkbox"/> Seismic levelers (Q4695)
<b>EXTERIOR BACK PANEL</b>	<input type="checkbox"/> Solid back panel, black	<input type="checkbox"/> Rear loading hinged doors, locking
<b>HEADER SIGN</b>	<input type="checkbox"/> None	<input type="checkbox"/> Backlit sign (custom printing) <input type="checkbox"/> Backlit sign (no printing)
<b>SHELVING</b>	<input type="checkbox"/> Metal shelves, non-lighted	<input type="checkbox"/> Metal shelves, lighted (LED 4200K) <input type="checkbox"/> Metal shelves, lighted (T-8)
<b>ELECTRICAL CONNECT</b>	<input type="checkbox"/> 6' straight blade power cord (top exit)	<input type="checkbox"/> 6' locking blade power cord (top exit) <input type="checkbox"/> Electrical leads (remote)
<b>REFRIGERATION</b>	<input type="checkbox"/> Breeze~E (Type-II) w/ EnergyWise s/c refrigeration (front access)	<input type="checkbox"/> Breeze~E (Type-II) w/ EnergyWise s/c refrigeration (rear access) <input type="checkbox"/> Note: Remote doesn't incl Conds unit. Floor drain reqd. <input type="checkbox"/> <sup>1</sup> Remote w/thermostat, solenoid & TXV
<b>MISCELLANEOUS</b>		<input type="checkbox"/> Roll-down security cover, locking (Requires two full end panels) (n/a w/ night curtain) <input type="checkbox"/> Second year parts & labor warranty (excludes compressor)
<b>ACCESSORIES</b>		<input type="checkbox"/> <sup>2</sup> Night curtain, retractable, non-locking <input type="checkbox"/> Price tag moulding (matches interior color) <input type="checkbox"/> <sup>3</sup> Solid security cover, removable, locking

**Option Notes:** 1 - See tech spec for remote load reqmts  
 2 - Cannot be used w/optional header sign  
 3 - Cannot be used w/optional header sign

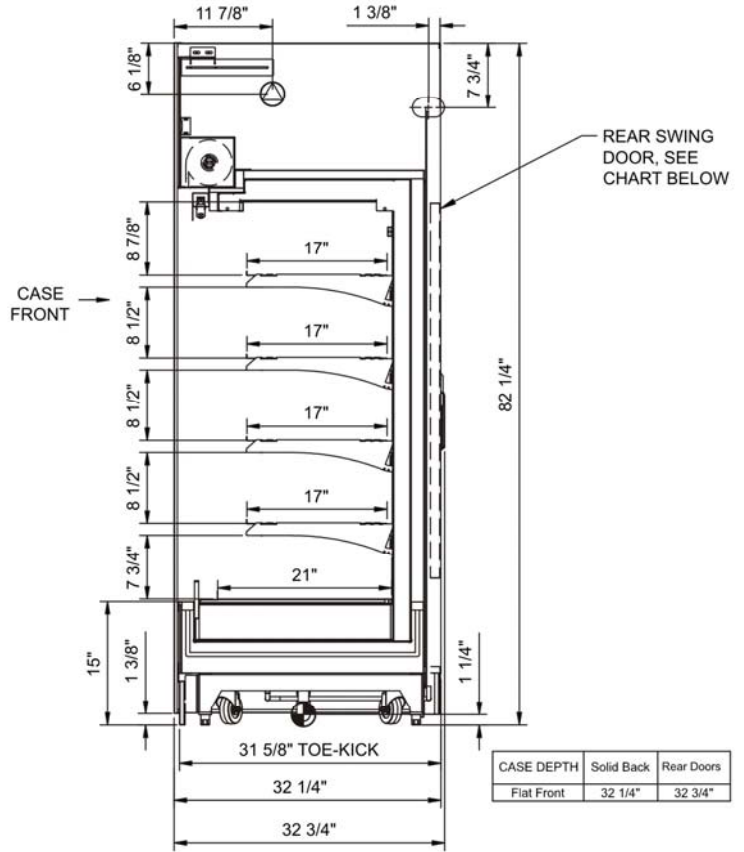
## Product Specifications

<b>Intended Environment:</b> Type II - Designed to operate in ambient conditions of 80°F and 60% relative humidity unless noted otherwise in system information below.		
<b>Zone</b>	<b>Intended Product To Be Displayed</b>	<b>Integrated Prod Temp ° F</b>
All	Packaged refrigerated products	40

**PLAN VIEW**



**SIDE VIEW**



**NOTE: ALL DIMENSIONS APPROXIMATE**

- ELECTRICAL JUNCTION BOX (SUPPLIED WITH 6" LEADS OR POWER CORD).
- DRY CASE SERVICE ACCESS AREA.
- REMOTE FLOOR SINK & UTILITIES ACCESS AREA.
- SELF-CONTAINED CASE SERVICE ACCESS AREA.
- REFRIGERATION LINE CONNECTION.
- LOCATION OF DRAIN TUBE FOR REMOTE REF. ONLY (SUPPLIED WITH 3/4" OR 1 1/2" PVC TUBE).

CASE DEPTH	Solid Back	Rear Doors
Flat Front	32 1/4"	32 3/4"

**Model Technical Specifications**

Model	L"	L1"	L2"	System Circuit Volts		Phs	Freq	Amps ***	Watts	Wires	NEMA Plug	SST	BTUH	Ship Wt	
B3632TM	N/A	36.63	12.63	Remote(Type I)	Circuit #1	110-120	1	60	1.13	99	2+G	Leads Multiple	20.00	4100	950
				Remote(Type II)	Circuit #1	110-120	1	60	1.13	99	2+G	Leads Multiple	20.00	5000	
				Self-Contained	Circuit #1	110-120	1	60	15.29	1,451	2+G	5-20P or L5-20P	N/A	N/A	
B4732TM	N/A	47.63	12.63	Remote(Type I)	Circuit #1	110-120	1	60	1.55	149	2+G	Leads Multiple	20.00	5650	1,150
				Remote(Type II)	Circuit #1	110-120	1	60	1.55	149	2+G	Leads Multiple	20.00	6850	
				Self-Contained	Circuit #1	208-240	1	60	10.36	1,966	2+G	6-20P or L6-20P	N/A	N/A	
B5932TM	N/A	59.63	12.63	Remote(Type I)	Circuit #1	110-120	1	60	2.20	198	2+G	Leads Multiple	20.00	6650	1,250
				Remote(Type II)	Circuit #1	110-120	1	60	2.20	198	2+G	Leads Multiple	20.00	8150	
				Self-Contained	Circuit #1	208-240	1	60	12.00	2,356	2+G	6-20P or L6-20P	N/A	N/A	
B7132TM	N/A	71.63	12.63	Remote(Type I)	Circuit #1	110-120	1	60	2.36	238	2+G	Leads Multiple	20.00	8150	1,350
				Remote(Type II)	Circuit #1	110-120	1	60	2.36	238	2+G	Leads Multiple	20.00	9975	
				Self-Contained	Circuit #1	208-240	1	60	15.42	1,046	2+G	6-20P or L6-20P	N/A	N/A	
B8832TM	N/A	88.38	12.63	Remote(Type I)	Circuit #1	110-120	1	60	3.21	316	2+G	Leads Multiple	20.00	12275	1,550
				Remote(Type II)	Circuit #1	110-120	1	60	3.21	316	2+G	Leads Multiple	20.00	15100	
				Self-Contained	Circuit #1	208-240	1	60	18.08	3,465	2+G	6-30P or L6-30P	N/A	N/A	

\*\*\* Does not include electric defrost on freezer models.

**Important Notes:**

- 1) ELECTRICAL NOTE: If GFCI is required, a GFCI breaker MUST be used in lieu of a GFCI receptacle
- 2) Top of unit must remain completely open.
- 3) Performance issues (product temperatures, water on floor, etc.) caused by adverse conditions are not covered by warranty.
- 4) Keep unit at least 15' from exterior doors, overhead HVAC vents, or any air curtain disruption.
- 5) End panels must be tightly joined or kept at least 6" away from any structure to prevent condensation.
- 6) Do not expose unit to direct sunlight or any heat source (ovens, fryers, etc.).
- 7) Tile floors, low ceilings, or small rooms will increase noise level.

**Regulatory Approvals:**

All Models	Accordance with AHRI Std 1200 ETL Listed to UL 471 ETL Listed to CAN/CSA 22.2 No. 120 ETL Sanitation to NSF 7
------------	--

