

Project	Quantity	Item #
Model Specified:		CSI Section 11400

### Compact Undercounter Freezer Models/Self-Contained



**Model ULT27-R**  
(shown with optional casters)

### 27", 32", 48", 60" & 72" Wide Models



Stainless Exterior

27" One Door Freezer Hinged Left	ULT27-L
27" One Door Freezer Hinged Right	ULT27-R
32" One Door Freezer Hinged Left	ULT32-L
32" One Door Freezer Hinged Right	ULT32-R
48" Two Door Freezer Hinged Left/Right	ULT48-LR
60" Two Door Freezer Hinged Left/Right	ULT60-LR
72" Two Door Freezer Hinged Left/Right	ULT72-LR

Traulsen's durable, high performance, compact undercounter freezer models provide a high quality/high value alternative to the all too common commodity types in today's market.

Durable, built with stainless steel exteriors and anodized aluminum interiors, their heavy duty cabinet construction promises years of useful service. Truly front breathing, their design allows for "zero-clearance" installation. As a result they can be placed right up against the back wall and alongside other kitchen equipment, saving valuable floor space.

Additionally, they offer a wide range of optional accessories to choose from, and are ideal for use with many different type applications.

### Standard Product Features

- Stainless Steel Exterior Top, Sides & Doors
- Anodized Aluminum Interior
- Front Breathing Self-Contained Refrigeration System
- Environmentally Friendly R-404A Refrigerant
- Self-Closing Stainless Steel Doors With Stay Open Feature At 105 Degrees
- Anodized Aluminum Interior Door Liner
- Interior Mounted Thermometer
- Two (2) Powder Coated Shelves Per Door, Mounted On Pilasters
- Automatic Non-Electric Condensate Evaporator
- Magnetic Snap-In Door Gaskets
- 8' Cord & Plug Attached
- Set of Four (4) 6" High Adjustable Legs (6 For 60" & 72" models)
- Three Year Parts And Labor Warranty
- Five Year Compressor Warranty

### Optional Accessory Kits\*

- **CASTER 5SET4** (four 6" high casters for 27", 32" & 48" models)
- **CASTER 5SET6** (six 6" high casters for 60" & 72" model)
- **CASTER SET4IN** (four 4" high casters for 27", 32" & 48" models)
- **CASTER 60SET3** (six 4" high casters for 60" & 72" model)
- **CASTER SET3IN** (four 3-1/2" high casters for 27", 32" & 48" models)
- **CASTER SET4** (six 3-1/2" high casters for 60" & 72" model)
- **CASTER SET2IN** (four 2-1/2" high casters for 27" models)
- **SHELF CPW1** (additional shelf for all 27" models)
- **SHELF CPW2** (additional shelf for all 32" models)
- **SHELF48 UPPER** (upper shelf for all 48" models)
- **SHELF48 LOWER** (lower shelf for all 48" models)
- **SHELF60 UPPER** (upper shelf for all 60" models)
- **SHELF60 LOWER** (lower shelf for all 60" models)
- **SHELF72 UPPER** (upper shelf for all 72" models)
- **SHELF72 LOWER** (lower shelf for all 72" models)

\*Optional accessory kits shipped separately for field installation.

### Factory Installed Options

- Stainless Steel Finished Back
- **CU27TOP BSWO** (22 ga. stainless steel top with 4" backsplash for models ULT27)
- **CU32TOP BSWO** (22 ga. stainless steel top with 4" backsplash for models ULT32)
- **CU48TOP BSWO** (22 ga. stainless steel top with 4" backsplash for models ULT48)
- **CU60TOP BSWO** (22 ga. stainless steel top with 4" backsplash for models ULT60)
- **CU72TOP BSWO** (22 ga. stainless steel top with 4" backsplash for models ULT72)
- Other Door Hingings



Listed by Underwriters Laboratories Inc., to U.S. and Canadian safety standards and NSF International in accordance with ANSI/NSF7.

Approval: \_\_\_\_\_



**TRAUlsen**  
4401 BLUE MOUND RD.  
PHONE 1 (800) 825-8220  
Website: www.traulsen.com

FT. WORTH, TX 76106  
FAX-MKTG. 1 (817) 624-4302

Project	Quantity	Item #
Model Specified:		CSI Section 11400

## Specifications

### Construction, Hardware and Insulation

Cabinet exterior front, one piece sides, and doors are constructed of 22 gauge stainless steel. Cabinet interior and door liners are constructed of anodized aluminum. The exterior cabinet back and bottom are constructed of galvanized steel.

Door self close at less than 90 degrees and also include a stay open feature at 105 degrees. Easily removable for cleaning, vinyl magnetic door gasket assures tight door seal. Both the cabinet and door(s) are insulated with an average of 2" thick high density, non-CFC, foamed in place polyurethane.

### Refrigeration System

A balanced, rear mounted, front breathing, self-contained refrigeration system using R-404A refrigerant is provided. It features a TXV valve, air-cooled hermetic compressor, a forced air evaporator coil and a non-electric condensate evaporator. An 8' cord and plug is provided. Standard operating temperature for freezer models is 0 to -5°F.

### Interior

Standard interior arrangements include two (2) powder coated wire shelves per door, mounted on pilasters. These are adjustable in 1/2" increments, allowing for a minimum of 1-1/2" spacing between shelves.

### Warranties

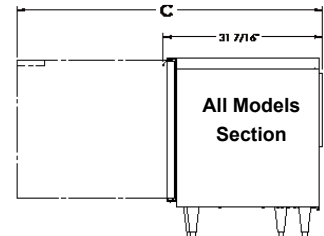
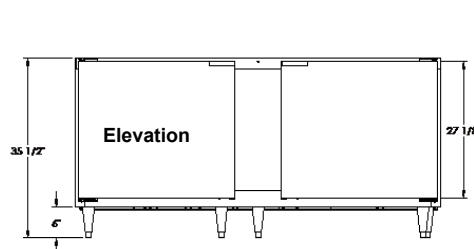
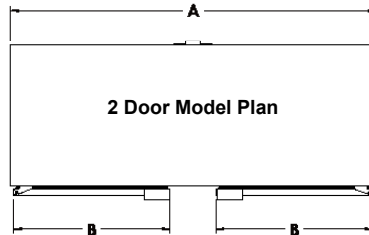
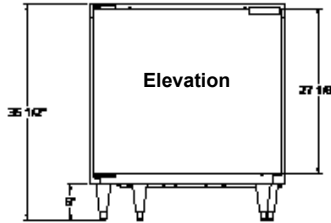
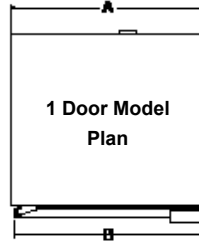
Both a three year parts and labor warranty and a five year compressor warranty (self-contained models only) are provided standard.

Cabinet Dimensional Data								
Model	Storage cu. ft.	Width - cabinet	Width - door	Depth - door open 90°	Clear door opening	# of doors	# of shelves	Total shelf area sq. ft.
ULT27	7.1	27"	25 7/8"	55 3/8"	22 3/4"	1	2	4.88
ULT32	8.8	32"	30 13/16"	60 3/8"	27 3/4"	1	2	6.1
ULT48	13.1	48"	21 1/8"	50 5/8"	18"	2	4	10.3
ULT60	16.7	60"	25 7/8"	55 3/8"	22 3/4"	2	4	13.2
ULT72	20	72"	30 13/16"	60 3/8"	27 3/4"	2	4	15.5

Electrical & Refrigeration Data 115/60/1 R-404A NEMA 5-15P			Shipping Data (42" D x 41" H)		
Model	Full Load Amps	BTU/HR - HP	Width	Volume crated	Weight - lbs. crated cu. ft.
ULT27	8.0	1930 (1/2)	45"	45"	240 net/275 gross
ULT32	7.1	1930 (1/2)	45"	45"	255 net/300 gross
ULT48	7.3	1930 (1/2)	69"	69"	355 net/400 gross
ULT60	7.3	1930 (1/2)	69"	69"	457 net/500 gross
ULT72	8.0	1930 (1/2)	84"	84"	548 net/757 gross

### NOTES:

- Based on a 90 degree F ambient and 20 degree F evaporator.
- When ordering please specify: voltage, Hinging, Optional Accessories and any additional warranties.
- Continued product development may necessitate specification changes without notice.



Part No. TR35925 (revised 1/13)

TRAUlsen  
4401 BLUE MOUND RD.  
PHONE 1 (800) 825-8220  
Website: www.traulsen.com

FT. WORTH, TX 76106  
FAX-MKTG. 1 (817) 624-4302

**Traulsen**