



T&S BRASS AND BRONZE WORKS, INC.
 2 Saddleback Cove / P.O. Box 1088
 Travelers Rest, SC 29690

Model No.
B-11K

Item No.

Travelers Rest, SC: 800-476-4103 • Simi Valley, CA: 800-423-0150 • Fax: 864-834-3518 • www.tsbrass.com

This Space for Architect/Engineer Approval

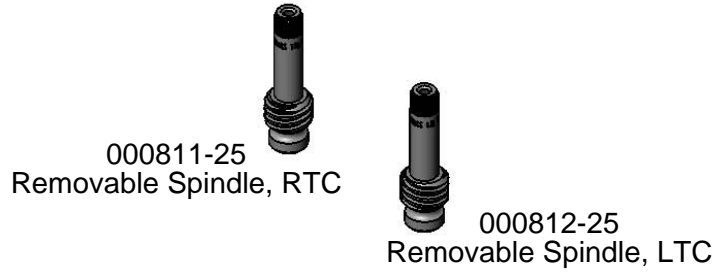
Job Name _____ Date _____

Model Specified _____ Quantity _____

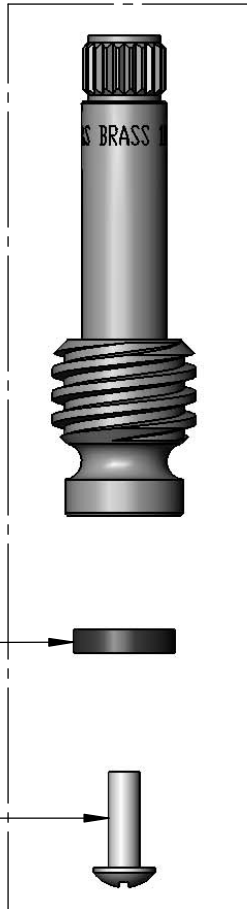
Customer/Wholesaler _____

Contractor _____

Architect/Engineer _____



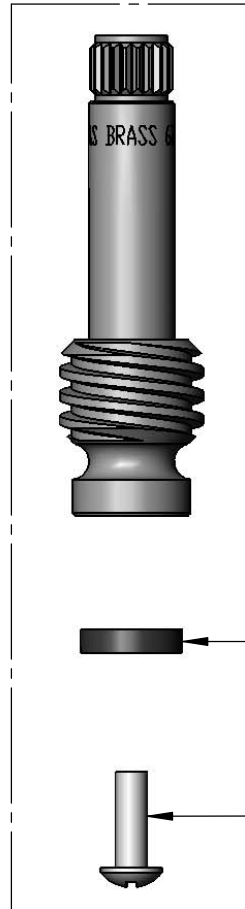
000811-25
Removable Spindle, RTC
Qty = 1 ea.



009841-45
Seat Washer

000933-45
Screw

000812-25
Removable Spindle, LTC
Qty = 1 ea.



009841-45
Seat Washer

000933-45
Screw

Product Specifications:
 Replacement Parts Kit For Eterna Spindles (RTC & LTC)

Drawn
DHL

Checked
DMH

Approved
JHB

Scale:
1:1

Date:
12/20/12