

6795

FROZEN BEVERAGE FREEZER

Two flavor, Floor model

Product Offering

Vary your menu by offering shakes & smoothies or frozen cocktails, fruit juices, coffees, cappuccino and tea slush beverages, all served at the desired thickness.

Freezing Cylinder

Two, 6.9 Liter (7.3 quarts)

Mix Hopper

Two, 15 Liters (15.85 quarts)

Refrigerated to maintain mix below 4°C (40°F)
Approved for dairy and non-dairy products.

Indicator Lights

Add Mix light alerts the operator to add mix. When Mix Out light turns ON, the unit automatically shuts down to prevent damage.

Automatic Consistency Control

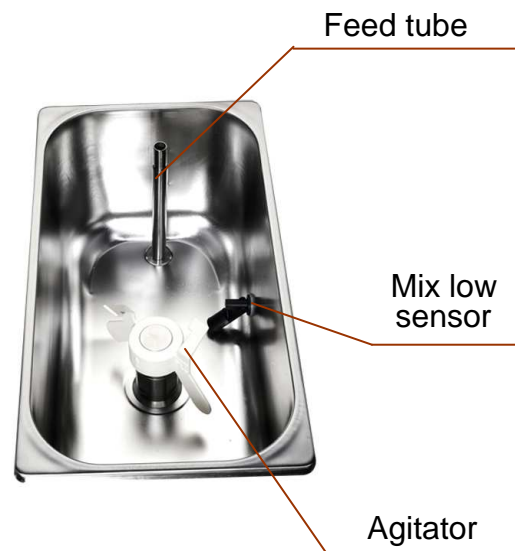
Specially designed viscosity control automatically maintains superior product quality. Adjustable control allows the operator to serve a wide variety of frozen beverages at the desired thickness.

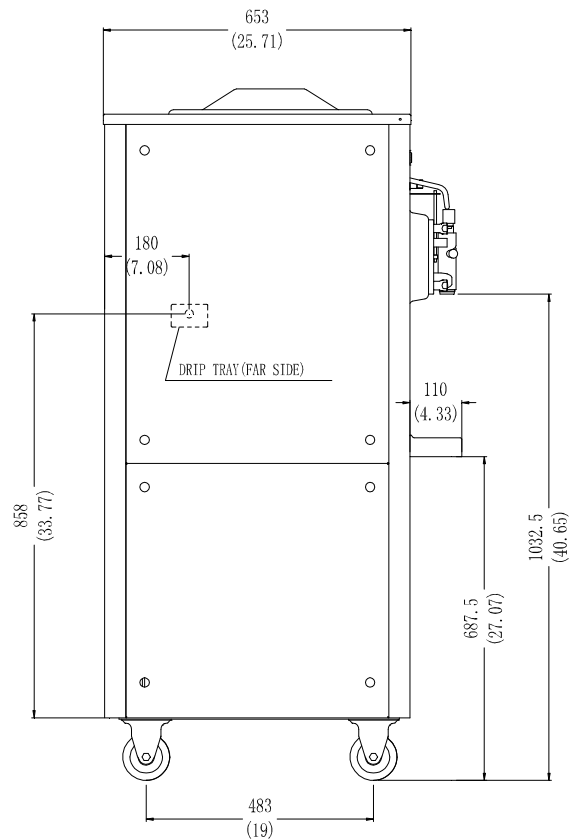
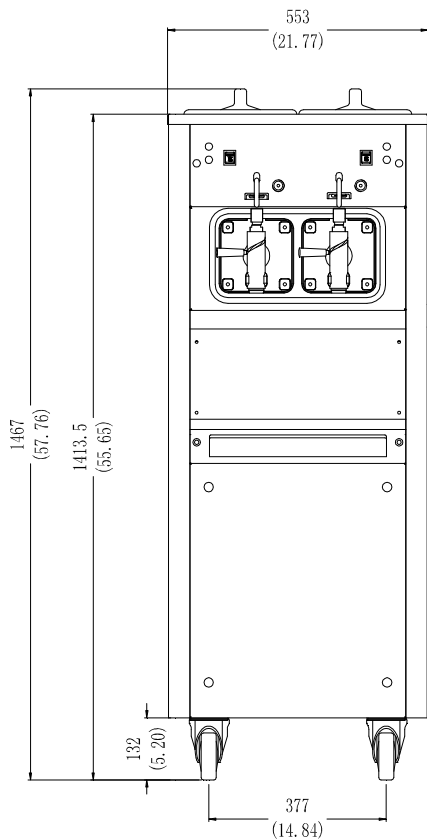
Output

480 Cups/Hour
(250 ml/cup at 40°F Liquid & 75°F Ambient)

Safety Protections

- High pressure switch prevents compressor overheat.
- Thermal overload protects from motor overheat.





Specifications

Weight	Kg / lb
Net	244 / 542
Shipping	268 / 595

Packaging Volume 0.90 CBM / 31.37 CBF

Dimensions	Net (mm/in)	Shipping (mm/in)
Width	553 / 21.8	660 / 26.0
Depth	653 / 25.7	830 / 32.7
Height	1467 / 57.8	1650 / 65.0

Electrical	Maximum Fuse Size	Min. Circuit Ampacity	Poles (P) Wires(W)
208-230/60/1	30	24	3P/3W

Electrical

One dedicated electrical connection is required. Unit shall be cord connected or permanently connected. Consult your local Spaceman distributor for available cord & receptacle specifications as per local codes.

Motor

Two, 4/5HP

Refrigeration System

Main compressors: Two, 8000 BTUH, R404A (BTUs may vary depending on compressor used.)

Separate Hopper Cooling Compressor:
One, 480 BTUH

Air Cooled

Minimum clearance of 152mm (6") on both sides is required to achieve optimum performance.

This unit may be manufactured in other electrical characteristics. Refer to the local distributor for availability. (For exact electrical information, always refer to the data label of the unit.)

Note

Continuing research results in steady improvements, therefore, these specifications are subject to change without notice.