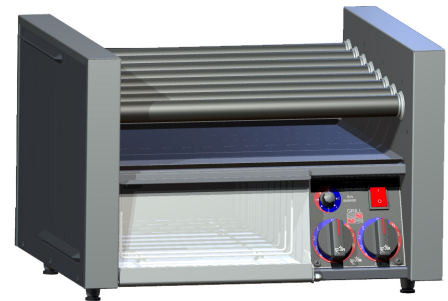


GRILL-MAX® ROLLER GRILL WITH CLEAR DOOR Model 14SCBBC

Features/Benefits:

- ★ The Star Grill-Max® line of roller grills take presentation and performance to its fullest potential morning, noon, and night.
- ★ Built-in bun box saves space, reduces cost and provides sanitary storage of buns and clear door improves visibility of buns.
- ★ Unique “stadium seating” rollers slanted at 5° for the best presentation of your products increasing sales and impulse purchases.
- ★ Slim-line design provides more grill surface in the same space. Increased capacity means additional sales and greater profits.
- ★ Infinite temperature control provide more linear heat control for better performance.
- ★ Easy access control knobs provide heating for rollers and for bun box temperature control.
- ★ Exclusive Duratec coated non-stick rollers, the best non-stick high performance coating for today’s high volume operations. Duratec rollers meet the demands for improved durability, cleanability and feature superior grip for improved rollability of today’s new Roller Grill snack foods.
- ★ Chrome rollers provide a durable cooking surface designed for traditional cooking operations.
- ★ Clear heated bun compartment has self closing tempered glass door allowing buns to stay fresh longer and allows better merchandising.
- ★ Heated bun box provides 50W of heat.
- ★ Seal-Max superior heavy-duty roller bearing and seal combination provides smoother operation, longer life, low maintenance and grease-free internal compartments.



Model 14SCBBC

Applications:

Star Roller Grills, Bun Boxes and Sneeze Guards combine to make the leading “Hot Dog Center” in the industry. Perfect for use in snack bars, convenience stores, recreational facilities, stadiums and virtually any venue where fast food is sold.

Quality Construction:

Constructed of heavy gauge stainless steel with options of Duratec or Chrome rollers with incoloy sheath elements. Infinite temperature control for accurate cooking and holding from low to high. Heavy-duty motor provides 360 rotation of rollers with stadium seating. Units ship standard with a 6’ cord and plug.

Accessories:

Sneeze guards are formed polycarbonate and meet health department requirements.

Warranty:

Grill-Max Roller Grills are covered by Star’s one-year parts and labor warranty.

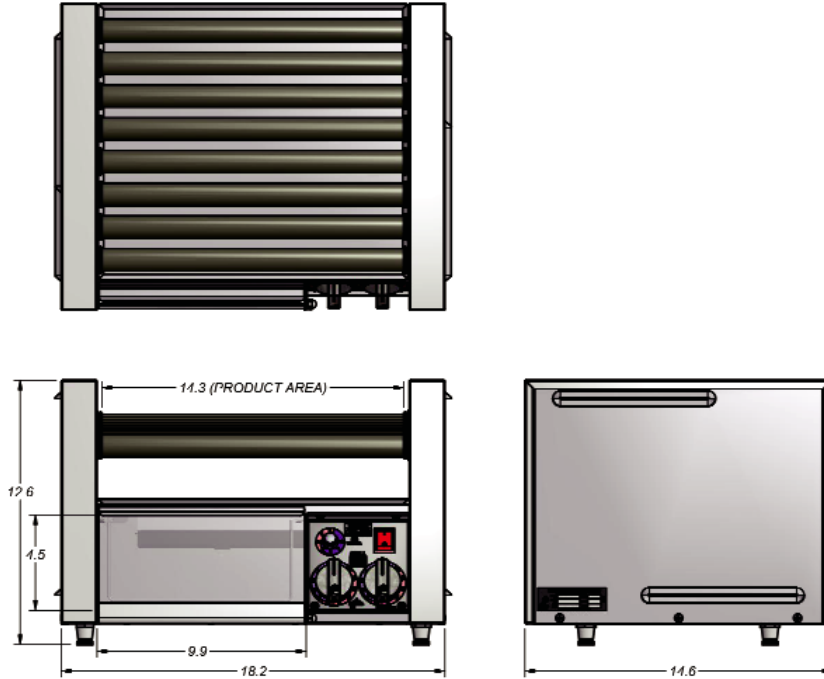




Star Manufacturing

Grill-Max Roller Grill with Clear Door

GRILL-MAX ROLLER GRILL WITH CLEAR DOOR Model 14SCBBC



Model Specifications

Model No.	Capacity	Dimensions			Voltage Plug	Wattage	Plug	Amps	Approximate Weight Installed lbs. (kg)
		Width Inches (cm)	Depth Inches (cm)	Height Inches (cm)					
14SCBBC	14 Hot Dogs	18.2	14.6	12.6	120V	750	5-15P	6.25	40
	12 Buns	(46.2)	(37.1)	(32.0)	230V	750	CEE7-7	3.25	40

Bun Box dimensions 9.9"W x 12"D x 4.5"H

Typical Specifications

Roller Grill is constructed of all stainless steel and utilizes Duratec non-stick coated rollers or chrome rollers and tubular incoloy sheath elements. Elements are mounted in a fixed and floating system allowing for lateral expansion to minimize warping. Infinite temperature control provide accurate cooking and holding from low to high. Unit has a heavy-duty motor and provides 360° rotation of rollers. The rollers are arranged in stadium seating with a slope of 5°, and a clear door provides better merchandising. The Roller Grill incorporates Seal-Max®, Star's exclusive seal and bearing combination. Units have a pilot light and 6' lead in cord with NEMA plug. UL-Sanitation to NSF Std. #4 approved and UL listed. Printed in the U.S.A. Star Grill-Max grills patent #6,393,971 & #6,782,802. Printed in U.S.A.

Due to periodic changes in designs, methods, procedures, policies and regulations, the specifications contained in this sheet are subject to change without notice. While Star Manufacturing exercises good faith efforts to provide information that is accurate, we are not responsible for errors or omissions in information provided or conclusions reached as a result of using the specifications. By using the information provided, the user assumes all risks in connection with such use.

Star Manufacturing - 10 Sunnen Drive - P.O. Box 430129 - St. Louis, MO 63143-3800
Phone: (314) 678-6303 - FAX: (314) 781-3636 - www.star-mfg.com