

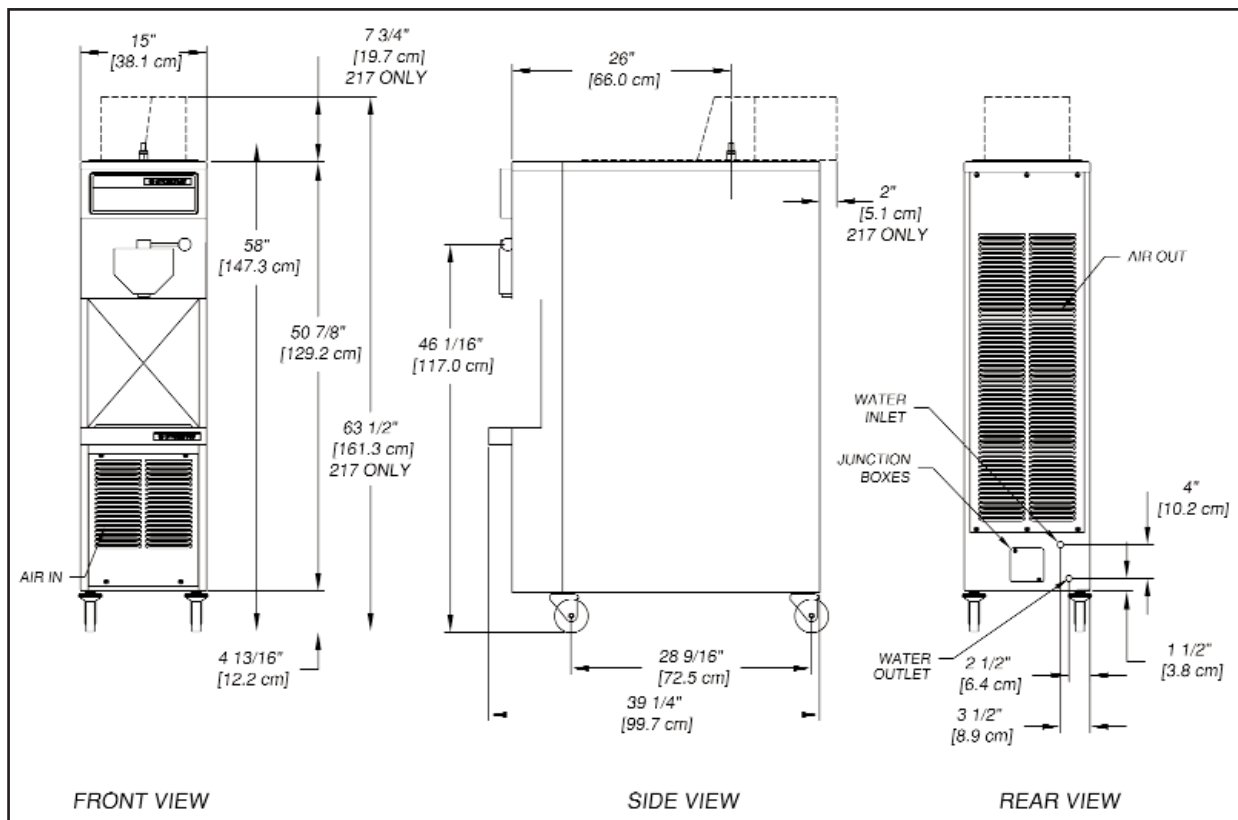
# SINGLE FLAVOR SOFT SERVE PRESSURIZED FREEZER

217 / 217R



- High production capacity with a 14,000 Btu/hr compressor and 2 hp drive motor; dispenses up to 425 five-ounce cones per hour.
- Superior product quality.
- Long wearing, self-sharpening auger flights gently fold product.
- Ideally suited for high volume operations, such as fast food locations, drive-ins, theme parks, institutions, and recreational facilities.
- Model 217 built-in mix pump or 217R remote pump ensures firm, delicious, and profitable soft serve product with consistent overrun even under the most demanding conditions.
- Excellent warranty: Five years on major components; One year on labor & non-wear parts.





	Model 217		Model 217R	
Dimensions	Machine	with crate	Machine	with crate
width	15" (38,1 cm)	25" (63,5 cm)	15" (38,1 cm)	25" (63,5 cm)
height	63-1/2" (161,3 cm)	67" (170,2 cm)	55-3/4" (141,6 cm)	67" (170,2 cm)
depth	39-1/4" (99,7 cm)	51" (129,5 cm)	39-1/4" (99,7 cm)	51" (129,5 cm)
Weight	415 lbs (188,2 kg)	525 lbs (238,1 kg)	385 lbs (174,6 kg)	495 lbs (224,5 kg)
Electrical circuit ampacity overcurrent protection device	<b>A/C, 1 Phase</b>	<b>A/C, 3 Phase</b>	<b>W/C, 1 Phase</b>	<b>W/C, 3 Phase</b>
	27A minimum	20A minimum	26A minimum	19A minimum
	35A maximum	25A maximum	35A maximum	25A maximum
<b>Compressor</b>	14,000 Btu/hr			
<b>Drive Motor</b>	2 hp			
<b>Air Flow</b>	Air cooled units require 6" (15,24 cm) air space at back and front			
<b>Plumbing Fittings</b>	Water cooled units require 3/8" N.P.T. water and drain fittings.			
<b>Hopper Volume</b>	6.5 gallon (24,61 liters)		N/A	
<b>Freezing Cylinder Volume</b>	1.33 gallon (5.32 quart), 5,4 liters			

Continuous research leads to ongoing product improvements; therefore, these specifications are subject to change without notice, and should not be used as installation specifications.

Distributed by:



FOODSERVICE EQUIPMENT

502 Highway 67 • Kiel, WI 53042-1600

920-894-2293 • 800-558-5807

Fax: 920-894-7029

E-mail: [foodservice@stoelting.com](mailto:foodservice@stoelting.com)

[www.stoeltingfoodservice.com](http://www.stoeltingfoodservice.com)

ISO 9001:2008 Registered

Certified, Listed and/or Recognized by:



STMF-109 1/11