

Refrigerated Self-Service Case Top Mount Compressor

Lengths include end panels

- B424TM
- B824TM

47-1/8"L x 25"D x 81-1/8"H  
 92-1/8"L x 25"D x 81-1/8"H



MODEL SHOWN: B424TM

**STANDARD FEATURES**

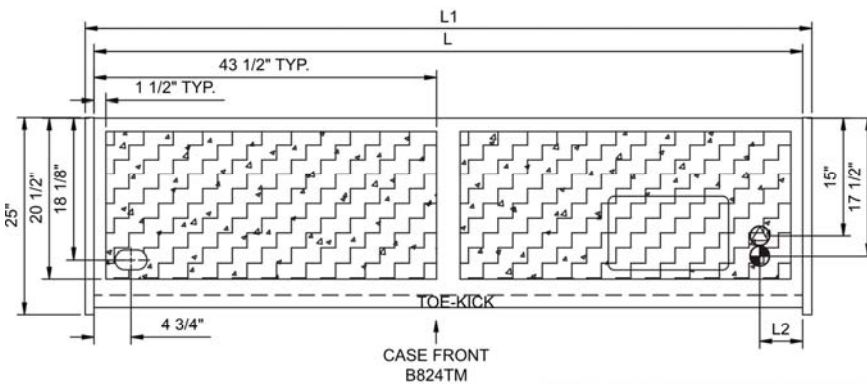
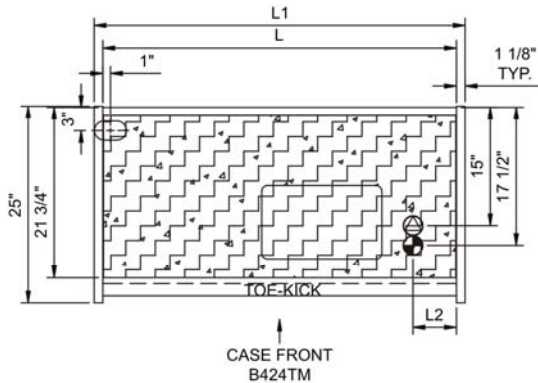
- Breeze™ w/EnergyWise s/c refrigeration
- Compressor air intake and discharge at top. Top of unit must remain completely open. (minimum 18" clearance above needed for compressor air discharge)
- Condensate pan (self-contained refrig. only)
- Full end panels w/mirror interior
- Integrated average product temperature of 40°F or less
- Levelers
- Removable deck pans provide complete access to evaporator coil & refrigeration connections
- Shelving removable and adjustable on 1" centers
- Solid back panel, black
- T-8 top light(s)

Features	Standard	Options
<b>EXTERIOR COLOR</b>	<input type="checkbox"/> Laminated (non-premium) Confirm pattern/grain direction	<input type="checkbox"/> Laminated (premium) Confirm pattern/grain direction <input type="checkbox"/> Stainless steel
<b>INTERIOR COLOR</b>	<input type="checkbox"/> Black	<input type="checkbox"/> Stainless steel
<b>LOWER FRONT PANEL COLOR</b>	<input type="checkbox"/> Painted - Black	<input type="checkbox"/> Stainless steel (w/stainless ext. only)
<b>HEADER SIGN</b>	<input type="checkbox"/> None	<input type="checkbox"/> Backlit sign (custom printing) <input type="checkbox"/> Backlit sign (no printing)
<b>SHELVING</b>	<input type="checkbox"/> Metal shelves, non-lighted	<input type="checkbox"/> Metal shelves, lighted (LED) <input type="checkbox"/> Metal shelves, lighted (T-8)
<b>ELECTRICAL CONNECT</b>	<input type="checkbox"/> 6' straight blade power cord (base exit)	<input type="checkbox"/> 6' locking blade power cord (base exit) <input type="checkbox"/> Electrical leads (remote)
<b>REFRIGERATION</b>	<input type="checkbox"/> Breeze™ w/EnergyWise s/c refrigeration	<input type="checkbox"/> Note: Remote doesn't incl Conds unit. Floor drain reqd. <input type="checkbox"/> Remote w/thermostat, solenoid & TXV
<b>MISCELLANEOUS</b>		<input type="checkbox"/> Second year parts & labor warranty (excludes compressor)
<b>ACCESSORIES</b>		<input type="checkbox"/> Night curtain, retractable, non-locking <input type="checkbox"/> Solid security cover, removable, locking

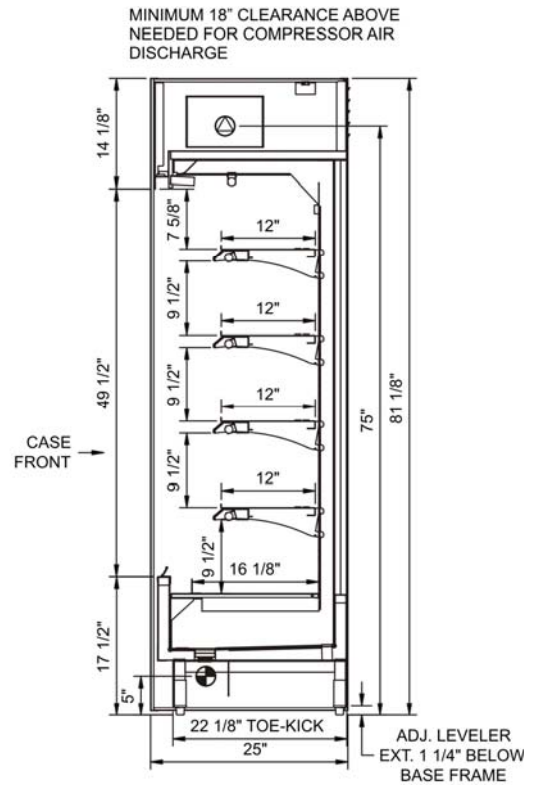
## Product Specifications

<b>Intended Environment:</b> Type I - Designed to operate in ambient conditions of 75°F with 55% relative humidity unless noted otherwise in system information below.	
<b>Zone</b>	<b>Integrated Prod Temp ° F</b>
All	40

**PLAN VIEW**



**SIDE VIEW**



NOTE: ALL DIMENSIONS APPROXIMATE

- ELECTRICAL JUNCTION BOX (SUPPLIED WITH 6" LEADS OR POWER CORD).
- LOCATION OF DRAIN TUBE FOR REMOTE REF. ONLY (SUPPLIED WITH 3/4" OR 1 1/2" PVC TUBE).

- REFRIGERATION LINE CONNECTION.
- REMOTE FLOOR SINK & UTILITIES ACCESS AREA.

- SELF-CONTAINED CASE SERVICE ACCESS AREA.
- DRY CASE SERVICE ACCESS AREA.

**Model Technical Specifications**

Model	L"	L1"	L2"	System Circuit Volts		Phs	Freq	Amps ***	Watts	Wires	NEMA Plug	SST	BTUH	Ship Wt	Frt Cls	
B424TM	N/A	47.13	5.50	Remote (Type I)	Circuit #1	110-120	1	60	2.00	213	2+G	Leads Multiple	20.0	6,950	700	110
				Self-Contained	Circuit #1	110-120	1	60	22.60	2,099	2+G	5-30P or L5-30P	N/A	N/A		
B824TM	N/A	92.13	5.50	Self-Contained	Circuit #1	110/230V	1	60	13.50	3,503	3+G	14-20P or L14-20P	N/A	N/A	1,400	110

\*\*\* Does not include electric defrost on freezer models.

**Regulatory Approvals:**

All Models	Accordance with AHRI Std 1200 ETL Listed to UL 471 ETL Listed to CAN/CSA 22.2 No. 120 ETL Sanitation to NSF 7
------------	--



**Important Notes:**

- 1) ELECTRICAL NOTE: If GFCI is required, a GFCI breaker MUST be used in lieu of a GFCI receptacle
- 2) Top of unit must remain completely open.
- 3) Performance issues (product temperatures, water on floor, etc.) caused by adverse conditions are not covered by warranty.
- 4) Keep unit at least 15" from exterior doors, overhead HVAC vents, or any air curtain disruption.
- 5) End panels must be tightly joined or kept at least 6" away from any structure to prevent condensation.
- 6) Do not expose unit to direct sunlight or any heat source (ovens, fryers, etc.).
- 7) Tile floors, low ceilings, or small rooms will increase noise level.