



Product Specifications

ITEM NO: _____
PROJECT: _____
DATE: _____

Refrigerated Self-Service Case

☐ CO2739R

Lengths include end panels
28"L x 34-3/4"D x 39-5/8"H



MODEL SHOWN: CO2739R

STANDARD FEATURES

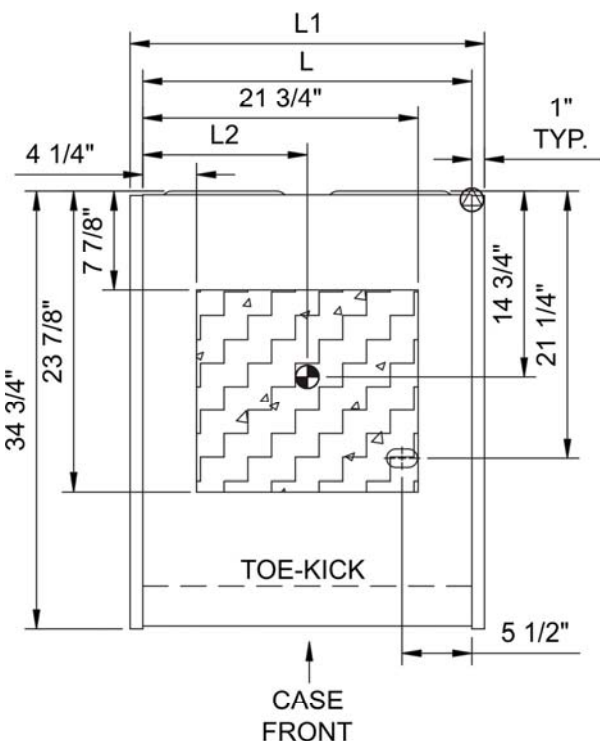
- Breeze™ w/EnergyWise s/c refrigeration
- Angled deck (n/a w/display steps)
- Compressor air intake from rear and out front panel at toe kick. Front panel cannot be blocked.
- Condensate pan (self-contained refrig. only)
- Full end panels w/mirror interior
- Integrated average product temperature of 40°F or less
- One year parts & labor; 5 year compressor warranty
- T-8 top light

Features	Standard	Options
EXTERIOR COLOR	<input type="checkbox"/> Laminated (non-premium) Confirm pattern/grain direction	<input type="checkbox"/> Laminated (premium) Confirm pattern/grain direction <input type="checkbox"/> Stainless steel
INTERIOR COLOR	<input type="checkbox"/> Black	<input type="checkbox"/> Stainless steel
BASE	<input type="checkbox"/> Casters (n/a with remote)	<input type="checkbox"/> Levelers
TOE KICK	<input type="checkbox"/> Black	<input type="checkbox"/> Stainless steel
ELECTRICAL CONNECT	<input type="checkbox"/> 6' straight blade power cord (self cont.)	<input type="checkbox"/> 6' locking power cord (self cont.) <input type="checkbox"/> Electrical leads (remote)
REFRIGERATION	<input type="checkbox"/> Breeze™ w/EnergyWise s/c refrigeration	<input type="checkbox"/> Note: Remote doesn't incl Conds unit. Floor drain reqd. <input type="checkbox"/> Remote w/thermostat, solenoid & TXV
MISCELLANEOUS		<input type="checkbox"/> Second year parts & labor warranty (excludes compressor)
ACCESSORIES		<input type="checkbox"/> 2"H Display steps <input type="checkbox"/> Night curtain, retractable, non-locking <input type="checkbox"/> Removable wire security cover, locking

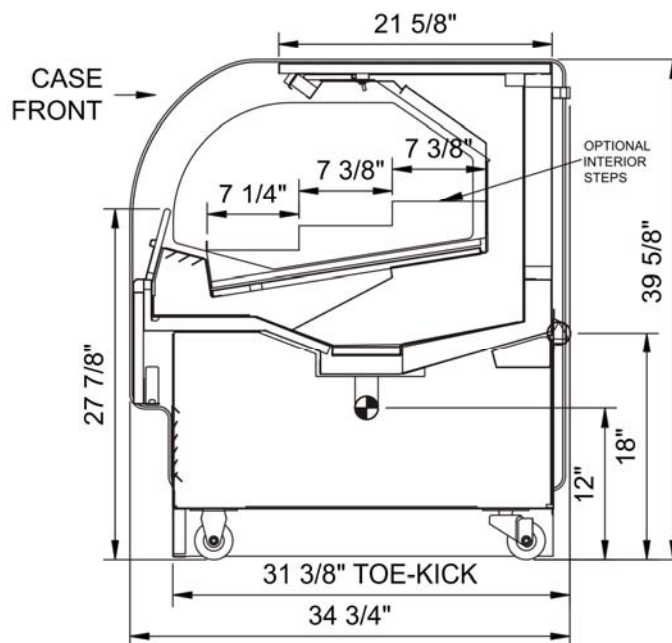
Product Specifications

Intended Environment: Type I - Designed to operate in ambient conditions of 75°F with 55% relative humidity unless noted otherwise in system information below.		
Zone	Intended Product To Be Displayed	Integrated Prod Temp ° F
All	Bottled or packaged perishable products	40

PLAN VIEW



SIDE VIEW



NOTE: ALL DIMENSIONS APPROXIMATE

⊗ ELECTRICAL JUNCTION BOX (SUPPLIED WITH 6" LEADS OR POWER CORD).
⊙ LOCATION OF DRAIN TUBE FOR REMOTE REF. ONLY (SUPPLIED WITH 3/4" OR 1 1/2" PVC TUBE).

⊕ REFRIGERATION LINE CONNECTION.
⊞ REMOTE FLOOR SINK & UTILITIES ACCESS AREA.

⊞ SELF-CONTAINED CASE SERVICE ACCESS AREA.
⊞ DRY CASE SERVICE ACCESS AREA.

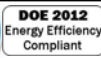
Model Technical Specifications

Model	L"	L1"	L2"	System Circuit Volts			Phs	Freq	Amps ***	Watts	Wires	NEMA Plug	SST	BTUH	Ship Wt	Frt Cls
CO2739R	N/A	28.00	13.00	Remote (Type I)	Circuit #1	110-120	1	60	1.09	74	2+G	Leads Single	20	1,300	475	110
				Self-Contained	Circuit #1	110-120	1	60	6.44	735	2+G	5-15P or L5-15P	N/A	N/A		

*** Does not include electric defrost on freezer models.

Regulatory Approvals:

All Models	<p>Accordance with AHRI Std 1200</p> <p>ETL Listed to UL 471</p> <p>ETL Listed to CAN/CSA 22.2 No. 120</p> <p>ETL Sanitation to NSF 7</p>
------------	---



Important Notes:

- 1) ELECTRICAL NOTE: If GFCI is required, a GFCI breaker MUST be used in lieu of a GFCI receptacle
- 2) Performance issues (product temperatures, water on floor, etc.) caused by adverse conditions are not covered by warranty.
- 3) Keep unit at least 15" from exterior doors, overhead HVAC vents, or any air curtain disruption.
- 4) End panels must be tightly joined or kept at least 6" away from any structure to prevent condensation.
- 5) Do not expose unit to direct sunlight or any heat source (ovens, fryers, etc.).
- 6) Keep at least 8" of clearance above unit for air discharge (self-contained only).
- 7) Tile floors, low ceilings, or small rooms will increase noise level.