

**Product Specifications**

**Refrigerated Self-Service Case**

Lengths include 1" end panels

- CO35R-QS      36-1/4"L x 32-5/8"D x 61-5/8"H
- CO45R-QS      47-1/4"L x 32-5/8"D x 61-5/8"H
- CO55R-QS      59-1/4"L x 32-5/8"D x 61-5/8"H
- CO65R-QS      71-1/4"L x 32-5/8"D x 61-5/8"H

MODELS SHOWN: CO45R-QS

W/ CUTAWAY END PANEL



W/ FULL END PANEL



Conforms to NSF STD 7  
**TYPE II**

**STANDARD FEATURES**

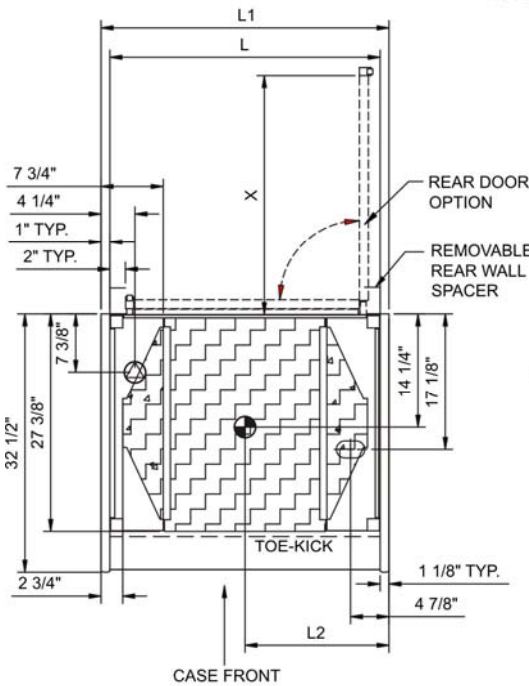
- Breeze~E (Type-II) w/ EnergyWise s/c refrigeration
- 4"D removable rear wall spacer (not included in depth dimensions)
- 6' power cord (base exit)
- Compressor air front intake, rear discharge. Front panel cannot be blocked. Must remain 4" from wall
- Condensate pan (self-contained refrig. only)
- Integrated average product temperature of 40°F or less
- One year parts & labor; 5 year compressor warranty
- Removable deck pans provide complete access to evaporator coil & refrigeration connections
- Shelving removable and adjustable on 1" centers
- T-8 top light(s)

| Features                      | Standard   | Options                                    |
|-------------------------------|--|--|
| EXTERIOR COLOR                | <input type="checkbox"/> Laminated (non-premium) Confirm pattern/grain direction |  |
| INTERIOR COLOR                | <input type="checkbox"/> Black   |  |
| LWR LOUVERED FRNT PANEL COLOR | <input type="checkbox"/> Painted - Black   |  |
| BASE                          | <input type="checkbox"/> Casters (n/a with remote)                               |  |
| END PANEL LEFT                | <input type="checkbox"/> Full end panel w/mirror interior                        | <input type="checkbox"/> Cutaway end panel |
| END PANEL RIGHT               | <input type="checkbox"/> Full end panel w/mirror interior                        | <input type="checkbox"/> Cutaway end panel |
| EXTERIOR BACK PANEL           | <input type="checkbox"/> Solid back panel, black                                 |  |
| SHELVING                      | <input type="checkbox"/> Metal shelves, lighted (T-8)                            |  |
| REFRIGERATION                 | <input type="checkbox"/> Breeze~E (Type-II) w/ EnergyWise s/c refrigeration      |  |

## Product Specifications

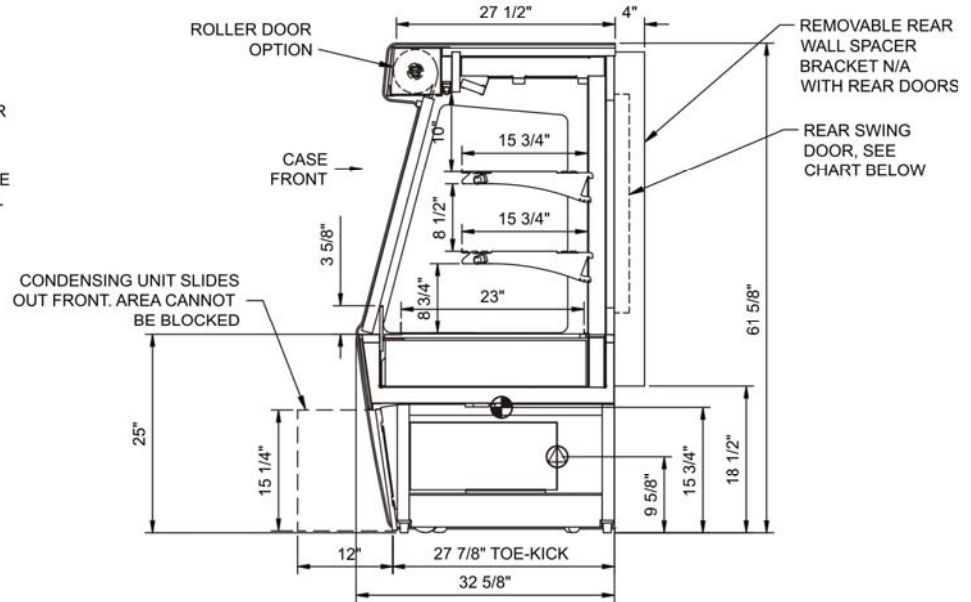
|  |                                 |
|--|---------------------------------|
| <b>Intended Environment:</b> Type II - Designed to operate in ambient conditions of 80°F and 60% relative humidity unless noted otherwise in system information below. |                                 |
| <b>Zone</b>  | <b>Integrated Prod Temp ° F</b> |
| All  | Packaged refrigerated products  |
|  | 40                              |

**PLAN VIEW**



**SIDE VIEW**

NOTE: CO35R - (X) = 30 1/8" - (1) DOOR LH HINGED  
 CO45R - (X) = 19 3/4" - (2) DOORS RH & LH HINGED  
 CO55R - (X) = 19 3/4" - (2) DOORS RH & LH HINGED  
 CO65R - (X) = 30 1/8" - (2) DOORS RH & LH HINGED



\*SELF-CONTAINED  
 SERVICE ACCESS AREAS ONLY ACCESSIBLE  
 BY PULLING OUT COMPRESSOR UNIT

|            |            |            |
|------------|------------|------------|
| CASE DEPTH | Solid Back | Rear Doors |
| Flat Front | 32 5/8"    | 34 1/2"    |

NOTE: ALL DIMENSIONS APPROXIMATE

- ELECTRICAL JUNCTION BOX (SUPPLIED WITH 6" LEADS OR POWER CORD).
- LOCATION OF DRAIN TUBE FOR REMOTE REF. ONLY (SUPPLIED WITH 3/4" OR 1 1/2" PVC TUBE).

- REFRIGERATION LINE CONNECTION.
- REMOTE FLOOR SINK & UTILITIES ACCESS AREA.

- SELF-CONTAINED CASE SERVICE ACCESS AREA.
- DRY CASE SERVICE ACCESS AREA.

**Model Technical Specifications**

| Model    | L"    | L1"   | L2"   | System         | Circuit Volts | Phs     | Freq | Amps *** | Watts | Wires | NEMA Plug | SST             | BTUH | Ship Wt | Frt Cls |     |
|----------|-------|-------|-------|----------------|---------------|---------|------|----------|-------|-------|-----------|-----------------|------|---------|---------|-----|
| CO35R-QS | 34.25 | 36.25 | 18.13 | Self-Contained | Circuit #1    | 110-120 | 1    | 60       | 13.30 | 1,252 | 2+G       | 5-20P or L5-20P | N/A  | N/A     | 800     | 110 |
| CO45R-QS | 45.25 | 47.25 | 23.63 | Self-Contained | Circuit #1    | 110-120 | 1    | 60       | 15.40 | 1,432 | 2+G       | 5-20P or L5-20P | N/A  | N/A     | 1,100   | 110 |
| CO55R-QS | 57.25 | 59.25 | 49.13 | Self-Contained | Circuit #1    | 110-120 | 1    | 60       | 16.00 | 1,596 | 2+G       | 5-20P or L5-20P | N/A  | N/A     | 1,150   | 110 |
| CO65R-QS | 69.25 | 71.25 | 49.13 | Self-Contained | Circuit #1    | 208-240 | 1    | 60       | 10.20 | 1,917 | 2+G       | 6-20P           | N/A  | N/A     | 1,200   | 110 |

\*\*\* Does not include electric defrost on freezer models.

**Regulatory Approvals:**

|            |  |
|------------|--|
| All Models | Accordance with AHRI Std 1200<br>ETL Listed to UL 471<br>ETL Listed to CAN/CSA 22.2 No. 120<br>ETL Sanitation to NSF 7 |
|------------|--|



**Important Notes:**

- 1) ELECTRICAL NOTE: If GFCI is required, a GFCI breaker MUST be used in lieu of a GFCI receptacle
- 2) Performance issues (product temperatures, water on floor, etc.) caused by adverse conditions are not covered by warranty.
- 3) Keep unit at least 15' from exterior doors, overhead HVAC vents, or any air curtain disruption.
- 4) End panels must be tightly joined or kept at least 6" away from any structure to prevent condensation.
- 5) Do not expose unit to direct sunlight or any heat source (ovens, fryers, etc.).
- 6) Keep at least 8" of clearance above unit for air discharge (self-contained only).
- 7) Tile floors, low ceilings, or small rooms will increase noise level. Remote refrigeration recommended.