

**Refrigerated Self-Service Case**
☐ CO44R

Lengths include end panels  
47-1/4"L x 32-5/8"D x 46-7/8"H


MODELS SHOWN: CO44R

**STANDARD FEATURES**

- Breeze™ w/EnergyWise s/c refrigeration
- 4"D removable rear wall spacer (not included in depth dimension)
- 6' straight blade power cord (base exit)
- Compressor air front intake, rear discharge. Front panel cannot be blocked. Must remain 4" from wall
- Condensate pan (self-contained refig. only)
- Exterior solid back panel, galvanized
- Integrated average product temperature of 40°F or less
- One year parts & labor; 5 year compressor warranty
- Removable deck pans provide complete access to evaporator coil & refrigeration connections
- T-8 top light

Features	Standard	Options
<b>EXTERIOR COLOR</b>	<input type="checkbox"/> Laminated (non-premium) Confirm pattern/grain direction	<input type="checkbox"/> Laminated (premium) Confirm pattern/grain direction <input type="checkbox"/> Stainless steel (includes lower front panel)
<b>INTERIOR COLOR</b>	<input type="checkbox"/> Black	<input type="checkbox"/> Stainless steel
<b>LWR LOUVERED FRNT PANEL COLOR</b>	<input type="checkbox"/> Painted - Black	<input type="checkbox"/> Stainless steel (w/stainless ext. only)
<b>BASE</b>	<input type="checkbox"/> Casters (n/a with remote)	<input type="checkbox"/> Levelers <input type="checkbox"/> Seismic levelers (Q4695)
<b>END PANEL LEFT</b>	<input type="checkbox"/> Full end panel w/mirror interior	<input type="checkbox"/> No end panel (for same case to case connections)
<b>END PANEL RIGHT</b>	<input type="checkbox"/> Full end panel w/mirror interior	<input type="checkbox"/> Case to case glass end
<b>SHELVING</b>	<input type="checkbox"/> None	<input type="checkbox"/> Metal shelf, non-lighted
<b>REFRIGERATION</b>	<input type="checkbox"/> Breeze™ w/EnergyWise s/c refrigeration	<input type="checkbox"/> Note: Remote doesn't incl Conds unit. Floor drain reqd. <input type="checkbox"/> Remote w/thermostat, solenoid & TXV
<b>MISCELLANEOUS</b>		<input type="checkbox"/> Second year parts & labor warranty (excludes compressor)
<b>ACCESSORIES</b>		<input type="checkbox"/> 2"H Display risers for lower area (n/a w/shelf) <input type="checkbox"/> Clean Sweep® coil cleaner (n/a w/remote) <input type="checkbox"/> Night curtain, retractable, non-locking <input type="checkbox"/> Solid security cover, removable, locking

## Product Specifications

**Intended Environment:** Type I - Designed to operate in ambient conditions of 75°F with 55% relative humidity unless noted otherwise in system information below.

**Zone** **Intended Product To Be Displayed**

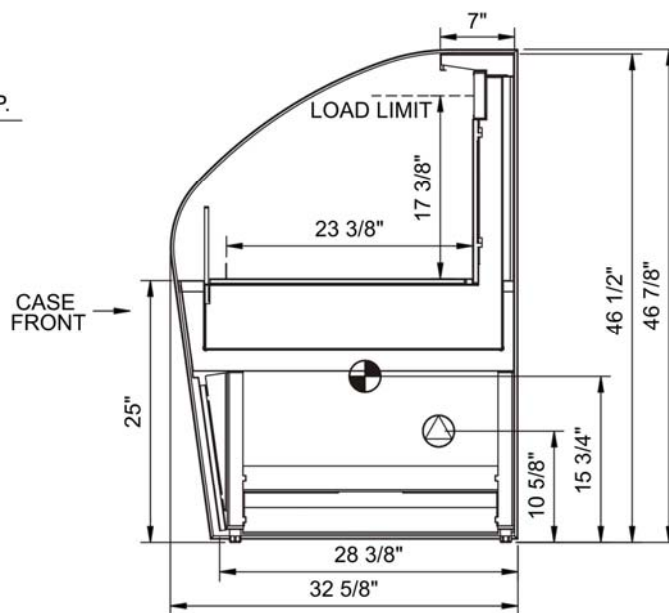
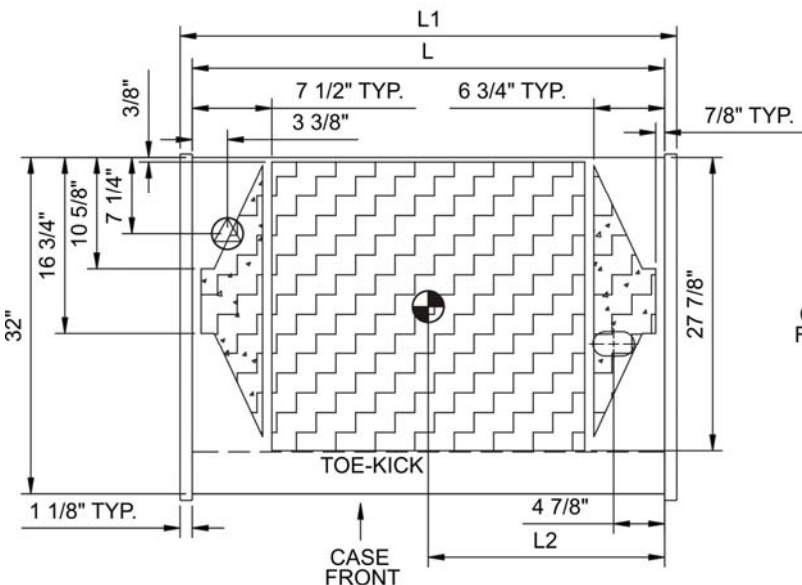
**Integrated Prod Temp ° F**

All Packaged refrigerated products

40

PLAN VIEW

SIDE VIEW



**NOTE: ALL DIMENSIONS APPROXIMATE**

**ELECTRICAL JUNCTION BOX**  
(SUPPLIED WITH 6" LEADS OR POWER CORD).  
 **LOCATION OF DRAIN TUBE FOR REMOTE REF.**  
ONLY (SUPPLIED WITH 3/4" OR 1 1/2" PVC TUBE).

**REFRIGERATION LINE CONNECTION.**  
 **REMOTE FLOOR SINK & UTILITIES**  
**ACCESS AREA.**

**SELF-CONTAINED CASE SERVICE ACCESS AREA.**  
 **DRY CASE SERVICE ACCESS AREA.**

### Model Technical Specifications

Model	L"	L1"	L2"	System	Circuit Volts	Phs	Freq	Amps ***	Watts	Wires	NEMA Plug	SST	BTUH	Ship Wt	Frt Cls
CO44R	N/A	47.25	22.50	Self-Contained	Circuit #1	110-120	1	60	12.00	1,186	2+G	5-20P or L5-20P	N/A	N/A	950 110

\*\*\* Does not include electric defrost on freezer models.

### Important Notes:

1) ELECTRICAL NOTE: If GFCI is required, a GFCI breaker MUST be used in lieu of a GFCI receptacle

### Regulatory Approvals:

All Models  
 Accordance with AHRI Std 1200  
 ETL Listed to UL 471  
 ETL Listed to CAN/CSA 22.2 No. 120  
 ETL Sanitation to NSF 7

