

Refrigerated Self-Service Case 50 Hz Electrical

Lengths include 1" end panels

- CO37RZ 36-1/4"L x 32-5/8"D x 79-5/8"H
- CO47RZ 47-1/4"L x 32-5/8"D x 79-5/8"H
- CO57RZ 59-1/4"L x 32-5/8"D x 79-5/8"H
- CO67RZ 71-1/4"L x 32-5/8"D x 79-5/8"H



MODEL SHOWN: CO47RZ

STANDARD FEATURES

- Breeze™ s/c refrigeration
- 4"D removable rear wall spacer (not included in depth dimensions)
- Compressor air front intake, rear discharge. Front panel cannot be blocked. Must remain 4" from wall
- Condensate pan (self-contained refrig. only)
- Integrated average product temperature of 40°F or less
- Leads
- One year parts & labor; 5 year compressor warranty
- Removable deck pans provide complete access to evaporator coil & refrigeration connections
- Shelving removable and adjustable on 1" centers
- T-8 top light(s)

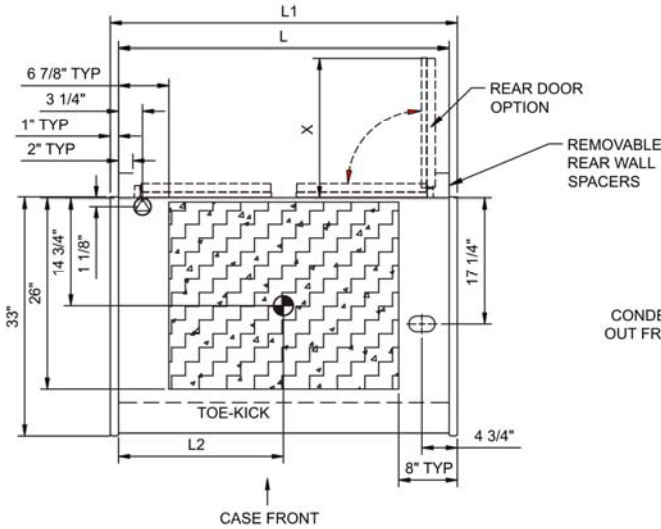
Features	Standard	Options
EXTERIOR COLOR	<input type="checkbox"/> Laminated (non-premium) Confirm pattern/grain direction	<input type="checkbox"/> Laminated (premium) Confirm pattern/grain direction <input type="checkbox"/> Stainless steel (includes lower front panel)
INTERIOR COLOR	<input type="checkbox"/> Black	<input type="checkbox"/> Stainless steel
LWR LOUVERED FRNT PANEL COLOR	<input type="checkbox"/> Black	<input type="checkbox"/> Stainless steel (w/stainless ext. only)
BASE	<input type="checkbox"/> Casters (n/a with remote)	<input type="checkbox"/> Levelers
END PANEL LEFT	<input type="checkbox"/> Full end panel w/mirror interior	<input type="checkbox"/> Cutaway end panel <input type="checkbox"/> No end panel (for same case to case connections)
END PANEL RIGHT	<input type="checkbox"/> Full end panel w/mirror interior	<input type="checkbox"/> Case to case acrylic end <input type="checkbox"/> Cutaway end panel
EXTERIOR BACK PANEL	<input type="checkbox"/> Solid back panel, black	<input type="checkbox"/> Rear loading hinged doors, locking <input type="checkbox"/> Solid back panel, stainless steel
SHELVING	<input type="checkbox"/> Solid shelves, non-lighted	<input type="checkbox"/> Solid shelves, lighted (T-8)
REFRIGERATION	<input type="checkbox"/> Breeze™ s/c refrigeration	<input type="checkbox"/> Note: Remote doesn't incl Conds unit. Floor drain reqd. <input type="checkbox"/> Remote w/thermostat, solenoid & TXV
MISCELLANEOUS		<input type="checkbox"/> Case height wall spacer bracket (specify BL or SS) <input type="checkbox"/> International heat treated crating <input type="checkbox"/> Roll-down security cover, locking (Requires two end panels (full or cutaway) per case) <input type="checkbox"/> Second year parts & labor warranty (excludes compressor)
ACCESSORIES		<input type="checkbox"/> Night curtain, retractable, non-locking <input type="checkbox"/> Solid security cover, removable, locking

Product Specifications

Intended Environment: Type II - Designed to operate in ambient conditions of 80°F and 60% relative humidity unless noted otherwise in system information below.	
Zone	Integrated Prod Temp ° F
All	40

PLAN VIEW

NOTE: CO37RZ - (X) = 30" - (1) DOOR LH HINGED
 CO47RZ - (X) = 19" - (2) DOORS RH & LH HINGED
 CO57RZ - (X) = 20 5/8" - (2) DOORS RH & LH HINGED
 CO67RZ - (X) = 30" - (2) DOORS RH & LH HINGED

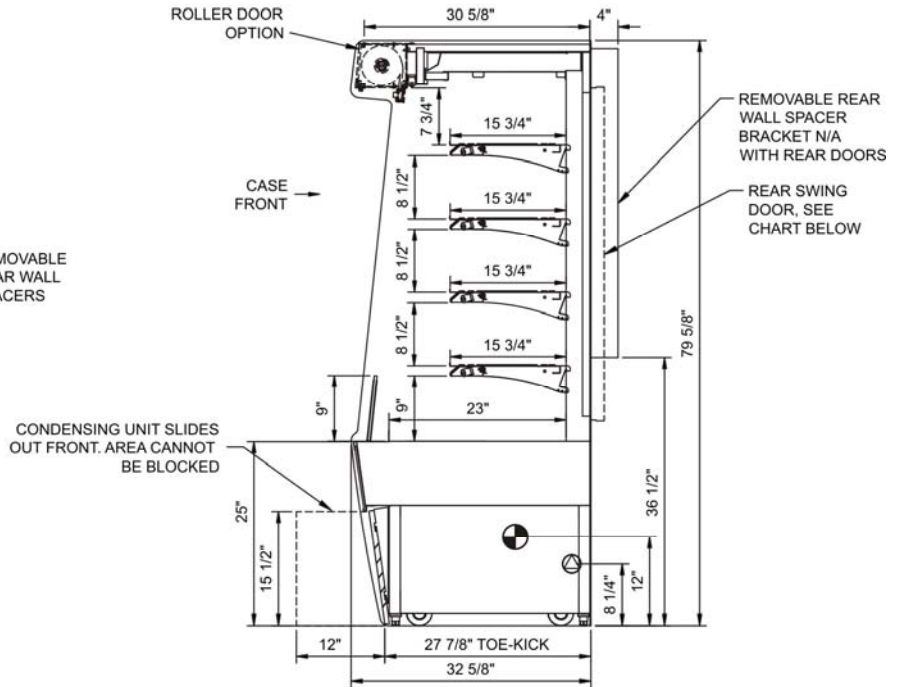


*SELF-CONTAINED
 SERVICE ACCESS AREAS ONLY ACCESSIBLE
 BY PULLING OUT COMPRESSOR UNIT

NOTE: ALL DIMENSIONS APPROXIMATE

- ELECTRICAL JUNCTION BOX (SUPPLIED WITH 6" LEADS OR POWER CORD).
- REMOTE FLOOR SINK & UTILITIES ACCESS AREA.
- LOCATION OF DRAIN TUBE FOR REMOTE REF. ONLY (SUPPLIED WITH 3/4" OR 1 1/2" PVC TUBE).
- SELF-CONTAINED CASE SERVICE ACCESS AREA.
- REFRIGERATION LINE CONNECTION.
- DRY CASE SERVICE ACCESS AREA.

SIDE VIEW



CASE DEPTH	Solid Back	Rear Doors
Flat Front	32 5/8"	34 1/2"

Model Technical Specifications

Model	L"	L1"	L2"	System Circuit Volts	Phs	Freq	Amps ***	Watts	Wires	NEMA Plug	SST	BTUH	Ship Wt	Frt Cls		
CO37RZ	34.25	36.25	18.00	Self-Contained	Circuit #1	208-240	1	50	9.26	1,737	2+G	Leads Single	N/A	N/A	960	110
CO47RZ	45.25	47.25	18.38	Self-Contained	Circuit #1	208-240	1	50	12.00	2,108	2+G	Leads Single	N/A	N/A	1,150	110
CO57RZ	57.25	59.25	10.00	Self-Contained	Circuit #1	208-240	1	50	12.00	1,875	2+G	Leads Single	N/A	N/A	1,350	110
CO67RZ	69.25	71.25	31.25	Self-Contained	Circuit #1	208-240	1	50	14.70	2,108	2+G	Leads Single	N/A	N/A	1,550	110

*** Does not include electric defrost on freezer models.

Regulatory Approvals:

All Models	Accordance with AHRI Std 1200 ETL Listed to UL 471 ETL Listed to CAN/CSA 22.2 No. 120 ETL Sanitation to NSF 7
------------	--



Important Notes:

- 1) Performance issues (product temperatures, water on floor, etc.) caused by adverse conditions are not covered by warranty.
- 2) Keep unit at least 15' from exterior doors, overhead HVAC vents, or any air curtain disruption.
- 3) End panels must be tightly joined or kept at least 6" away from any structure to prevent condensation.
- 4) Do not expose unit to direct sunlight or any heat source (ovens, fryers, etc.).
- 5) Keep at least 8" of clearance above unit for air discharge (self-contained only).
- 6) Tile floors, low ceilings, or small rooms will increase noise level. Remote refrigeration recommended.