



Product Specifications

ITEM NO: _____
PROJECT: _____
DATE: _____

Combination Non-Refrigerated Service Above Refrigerated Self-Service Case

☐ COU2757R

Lengths include end panels
28"L x 34-1/2"D x 56-7/8"H



MODEL SHOWN: COU2757R

STANDARD FEATURES

- Breeze™ w/EnergyWise s/c refrigeration
- Angled deck (n/a w/display steps)
- Casters
- Clear glass shelf, lighted
- Compressor air intake from rear and out front panel at toe kick. Front panel cannot be blocked.
- Condensate pan (self-contained refig. only)
- Curved single pane, fixed front glass
- Full end panel w/mirror interior
- Integrated average product temperature of 40°F or less
- One year parts & labor; 5 year compressor warranty
- T-8 top & shelf lights

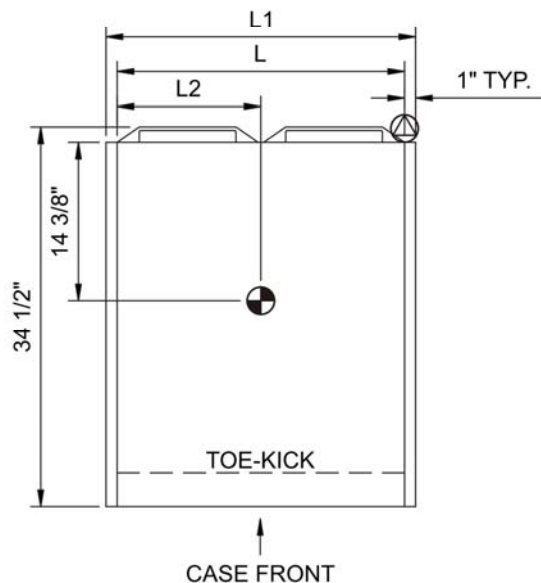
Features	Standard	Options
EXTERIOR COLOR	<input type="checkbox"/> Laminated (non-premium) Confirm pattern/grain direction	<input type="checkbox"/> Laminated (premium) Confirm pattern/grain direction <input type="checkbox"/> Stainless steel
INTERIOR COLOR	<input type="checkbox"/> Black	<input type="checkbox"/> Stainless steel
UPPER REAR	<input type="checkbox"/> Clear glass rear sliding doors w/o lock	<input type="checkbox"/> Reflective glass rear sliding doors w/o lock
ELECTRICAL CONNECT	<input type="checkbox"/> 6' straight blade power cord (self cont.)	<input type="checkbox"/> 6' locking power cord (self cont.)
MISCELLANEOUS		<input type="checkbox"/> LED lights <input type="checkbox"/> Rear door lock <input type="checkbox"/> Second year parts & labor warranty (excludes compressor)
ACCESSORIES		<input type="checkbox"/> 2"H Display steps <input type="checkbox"/> Night curtain, retractable, non-locking <input type="checkbox"/> Removable wire security cover, locking

Product Specifications

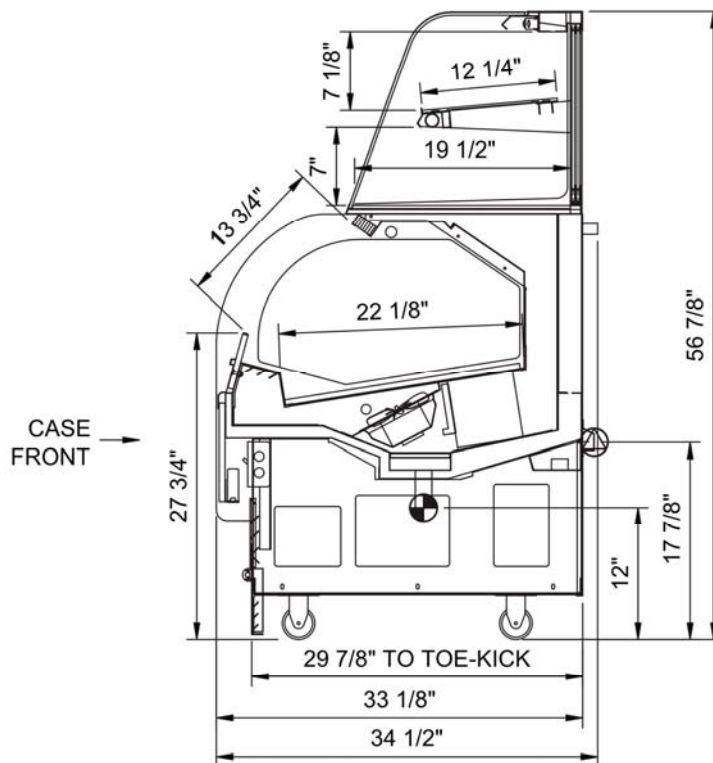
Intended Environment: Type I - Designed to operate in ambient conditions of 75°F with 55% relative humidity unless noted otherwise in system information below.

Zone	Intended Product To Be Displayed	Integrated Prod Temp ° F
1	Packaged refrigerated products	40
2	Packaged non-refrigerated products	Ambient

PLAN VIEW



SIDE VIEW



NOTE: ALL DIMENSIONS APPROXIMATE

- ELECTRICAL JUNCTION BOX (SUPPLIED WITH 6" LEADS OR POWER CORD).
- REMOTE FLOOR SINK & UTILITIES ACCESS AREA.
- LOCATION OF DRAIN TUBE FOR REMOTE REF. ONLY (SUPPLIED WITH 3/4" OR 1 1/2" PVC TUBE).
- SELF-CONTAINED CASE SERVICE ACCESS AREA.
- REFRIGERATION LINE CONNECTION.
- DRY CASE SERVICE ACCESS AREA.

Model Technical Specifications

Model	L"	L1"	L2"	System Circuit Volts			Phs	Freq	Amps ***	Watts	Wires	NEMA Plug	SST	BTUH	Ship Wt	Frt Cls
COU2757R	N/A	28.00	4.75	Self-Contained	Circuit #1	110-120	1	60	6.26	752	2+G	5-15P	N/A	N/A	530	110

*** Does not include electric defrost on freezer models.

Regulatory Approvals:

All Models	<p>Accordance with AHRI Std 1200</p> <p>ETL Listed to UL 471</p> <p>ETL Listed to CAN/CSA 22.2 No. 120</p> <p>ETL Sanitation to NSF 7</p>
------------	---

Important Notes:

- 1) ELECTRICAL NOTE: If GFCI is required, a GFCI breaker MUST be used in lieu of a GFCI receptacle
- 2) 35 1/2" Minimum door entry clearance required (Without shipping skid).
- 3) Compressor air ventilation is out the front panel. Front panel cannot be blocked. Product must be cooled before being displayed within the case.

