

Product Specifications

Refrigerated Self-Service Drop-In Counter Case - Four Display Levels

Lengths include end panels

- DOS3637R 38-1/8"L x 28-5/8"D x 60-3/4"H
- DOS4837R 50-1/8"L x 28-5/8"D x 60-3/4"H



MODEL SHOWN: DOS3637R

STANDARD FEATURES

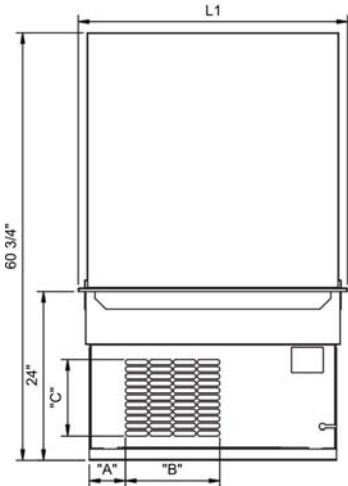
- Breeze™ w/ EnergyWise s/c refrigeration (rear access/ventilation)
- Compressor air rear intake, rear discharge
- Glass ends
- Integrated average product temperature of 40°F or less
- NOTE: A vent in the front of the counter is recommended to help dissipate compressor heat.
- NOTE: Height of display case above counter is 36 3/4"
- One year parts & labor; 5 year compressor warranty
- Shelving removable and adjustable on 1" centers
- T-8 top light

Features	Standard	Options
EXTERIOR COLOR	<input type="checkbox"/> Black	<input type="checkbox"/> Stainless steel
INTERIOR COLOR	<input type="checkbox"/> Black	<input type="checkbox"/> Stainless steel
UPPER REAR	<input type="checkbox"/> Solid back panel	<input type="checkbox"/> Clear glass rear sliding doors with inner acrylic plenum <input type="checkbox"/> Clear glass rear swinging doors with inner acrylic plenum
SHELVING	<input type="checkbox"/> Clear glass shelves, non-lighted	<input type="checkbox"/> Clear glass shelves, lighted (LED) <input type="checkbox"/> Clear glass shelves, lighted (T-8)
ELECTRICAL CONNECT	<input type="checkbox"/> 6' straight blade power cord (self cont.)	<input type="checkbox"/> 6' locking power cord (self cont.) <input type="checkbox"/> Electrical leads (remote)
REFRIGERATION	<input type="checkbox"/> Breeze™ w/ EnergyWise s/c refrigeration (rear access/ventilation)	<input type="checkbox"/> Breeze™ w/ EnergyWise s/c refrigeration (front access/ventilation) <input type="checkbox"/> Note: Remote doesn't incl Conds unit. Floor drain reqd. <input type="checkbox"/> Remote w/thermostat, solenoid & TXV
MISCELLANEOUS		<input type="checkbox"/> Rear door lock <input type="checkbox"/> Second year parts & labor warranty (excludes compressor)
ACCESSORIES		<input type="checkbox"/> Night curtain, retractable, non-locking <input type="checkbox"/> Solid security cover, removable, locking

Product Specifications

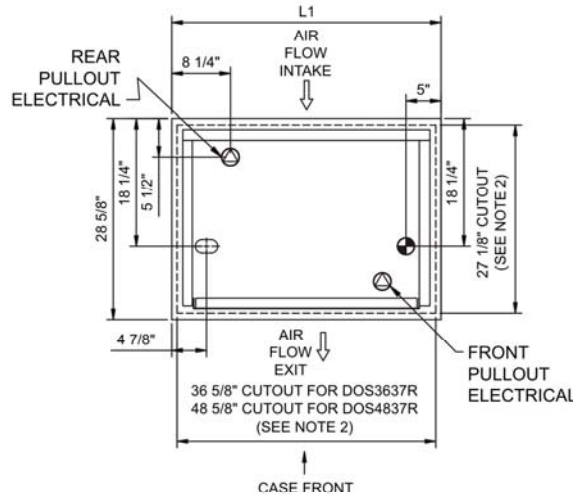
Intended Environment: Type I - Designed to operate in ambient conditions of 75°F with 55% relative humidity unless noted otherwise in system information below.	
Zone	Integrated Prod Temp ° F
All	40

REAR VIEW

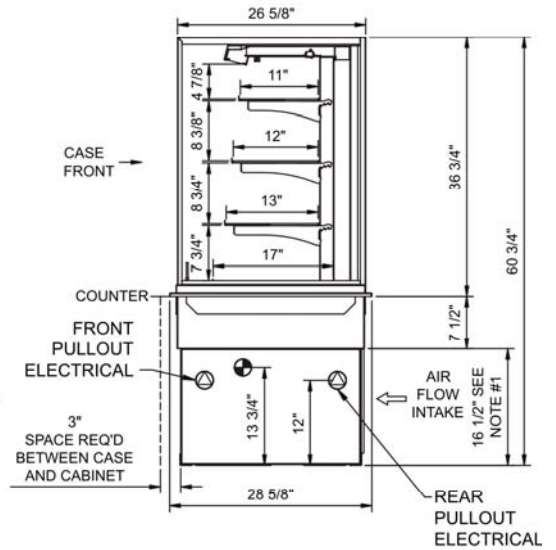


	"A"	"B"	"C"
DOS3637R	4 1/8"	14"	10 3/4"
DOS4837R	6"	14"	10 3/4"

PLAN VIEW



SIDE VIEW



- 16 1/2" TALL. FULL WIDTH OF CASE. OPENING IN BACK OF CABINET OR COUNTER IS REQUIRED TO PULL OUT REFRIGERATION SYSTEM.
- REPRESENTS CUTOUT SIZE IN CABINET FOR CASE TO DROP IN TO. SQUARE CORNERS ON CUTOUTS.
- BACK OF COUNTER / CABINET MUST BE VENTED PROPERLY FOR ADEQUATE AIRFLOW TO CONDENSOR.
- EXIT VENT IN FRONT OF CABINET IS PREFERRED. IF NOT PROVIDED, AIR VENT MUST BE SURE NOT TO MIX WITH INTAKE AIR.
- AIR FLOW INTAKE AND EXIT DETAILS ARE REVERSED WITH FRONT PULLOUT REFRIGERATION OPTION.

NOTE: ALL DIMENSIONS APPROXIMATE

- ELECTRICAL JUNCTION BOX (SUPPLIED WITH 6" LEADS OR POWER CORD).
- LOCATION OF DRAIN TUBE FOR REMOTE REF. ONLY (SUPPLIED WITH 3/4" OR 1 1/2" PVC TUBE).

- REFRIGERATION LINE CONNECTION.
- REMOTE FLOOR SINK & UTILITIES ACCESS AREA.

- SELF-CONTAINED CASE SERVICE ACCESS AREA.
- DRY CASE SERVICE ACCESS AREA.

Model Technical Specifications

Model	L"	L1"	L2"	System Circuit Volts			Phs	Freq	Amps ***	Watts	Wires	NEMA Plug	SST	BTUH	Ship Wt	Frt Cls
DOS3637R	N/A	38.13	5.00	Remote (Type I)	Circuit #1	110-120	1	60	2.02	211	2+G	Leads Multiple	20	3,150	720	110
				Self-Contained	Circuit #1	110-120	1	60	15.80	1,405	2+G	5-20P or L5-20P	N/A	N/A		
DOS4837R	N/A	50.13	5.00	Remote (Type I)	Circuit #1	110-120	1	60	2.50	193	2+G	Leads Multiple	20	4,000	780	110
				Self-Contained	Circuit #1	110-120	1	60	16.00	1,478	2+G	5-20P or L5-20P	N/A	N/A		

*** Does not include electric defrost on freezer models.

Regulatory Approvals:	
All Models	Accordance with AHRI Std 1200 ETL Listed to UL 471 ETL Listed to CAN/CSA 22.2 No. 120 ETL Sanitation to NSF 7

Important Notes:

- 1) ELECTRICAL NOTE: If GFCI is required, a GFCI breaker MUST be used in lieu of a GFCI receptacle
- 2) Back side of counter must be open or vented the full length of the unit to allow proper ventilation for the refrigeration system.
- 3) A vent in the front of the counter recommended to help dissipate compressor heat.
- 4) Height of display case above counter is 36 3/4"

