



Product Specifications

ITEM NO: _____
PROJECT: _____
DATE: _____

Refrigerated Self-Service Dual Sided Case

Lengths include end panels

- ☐ FSC463R
- ☐ FSC663R

47"L x 48"D x 63"H
75-3/8"L x 48"D x 63"H



NOTE: SHOWN W/ OPTIONAL CUTAWAY END PANELS



STANDARD FEATURES

- Breeze~E (Type-II) w/ EnergyWise s/c refrigeration
- 6' power cord
- Casters
- LED 3500K top light
- NOTE: Electrical specs reflect highest Amp draw using lighted shelves option
- One year parts & labor; 5 year compressor warranty
- Price tag moulding (matches interior color)
- Removable deck pans provide complete access to evaporator coil & refrigeration connections

Features	Standard	Options
EXTERIOR COLOR	<input type="checkbox"/> Laminated (non-premium) Confirm pattern/grain direction	<input type="checkbox"/> Laminated (premium) Confirm pattern/grain direction <input type="checkbox"/> Stainless steel (includes lower front panel)
INTERIOR COLOR	<input type="checkbox"/> Black	<input type="checkbox"/> Stainless steel
LOWER FRONT PANEL COLOR	<input type="checkbox"/> Black	<input type="checkbox"/> Stainless steel (w/stainless ext. only)
END PANEL LEFT	<input type="checkbox"/> Full end panel w/mirror interior (No mirror w/ss ext) vinyl edging	<input type="checkbox"/> Cutaway end panel with vinyl edging (N/A w/roll-down security cover)
END PANEL RIGHT	<input type="checkbox"/> Full end panel w/mirror interior (No mirror w/ss ext) vinyl edging	<input type="checkbox"/> Cutaway end panel with vinyl edging (N/A w/roll-down security cover)
SHELVING	<input type="checkbox"/> Non-adjustable metal shelves, non-lighted	<input type="checkbox"/> Non-adjustable metal shelves, lighted (LED 3500K)
REFRIGERATION	<input type="checkbox"/> Breeze~E (Type-II) w/ EnergyWise s/c refrigeration	<input type="checkbox"/> Remote DX refrigeration
MISCELLANEOUS		<input type="checkbox"/> Roll-down security cover, locking (Requires two full end panels) <input type="checkbox"/> Second year parts & labor warranty
ACCESSORIES		<input type="checkbox"/> Night curtain, retractable, non-locking, each side <input type="checkbox"/> Solid security cover, removable, locking, each side (Requires two end panels)

Product Specifications

Intended Environment: Type II - Designed to operate in ambient conditions of 80°F and 60% relative humidity unless noted otherwise in system information below.

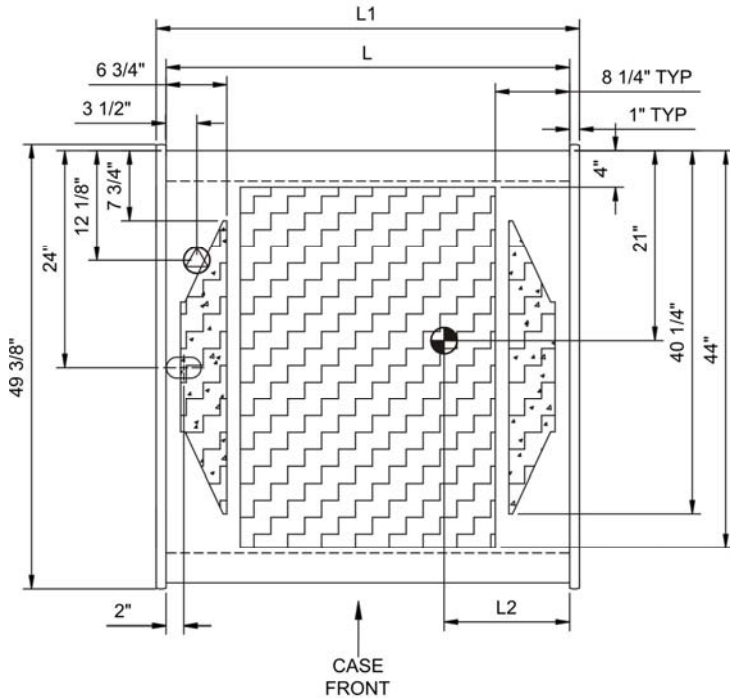
Zone **Intended Product To Be Displayed**

All Packaged refrigerated products

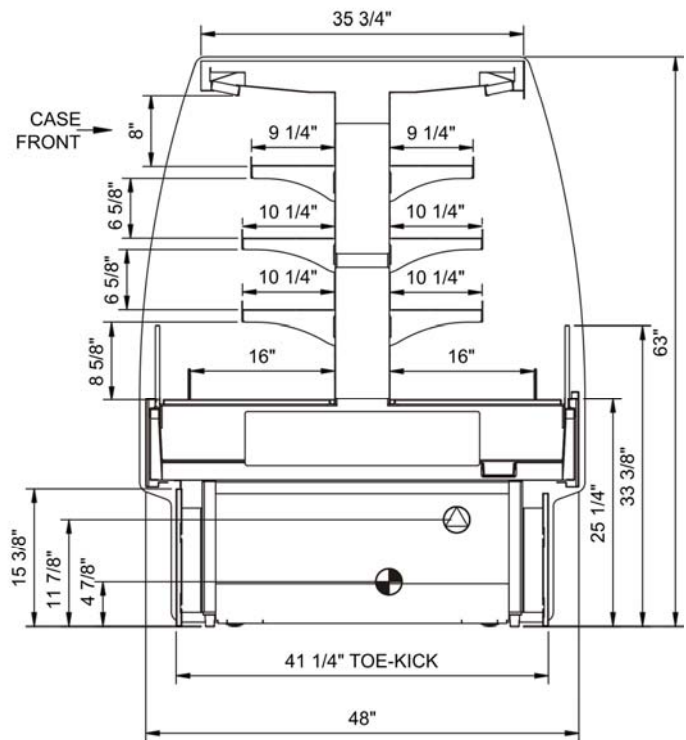
Integrated Prod Temp ° F

40

PLAN VIEW



SIDE VIEW



NOTE: ALL DIMENSIONS APPROXIMATE

⊗ ELECTRICAL JUNCTION BOX
(SUPPLIED WITH 6" LEADS OR POWER CORD).
⊙ LOCATION OF DRAIN TUBE FOR REMOTE REF.
ONLY (SUPPLIED WITH 3/4" OR 1 1/2" PVC TUBE).

⊕ REFRIGERATION LINE CONNECTION.
⊞ REMOTE FLOOR SINK & UTILITIES
ACCESS AREA.

⊞ SELF-CONTAINED CASE SERVICE ACCESS AREA.
⊞ DRY CASE SERVICE ACCESS AREA.

Model Technical Specifications

Model	L"	L1"	L2"	System Circuit Volts			Phs	Freq	Amps ***	Watts	Wires	NEMA Plug	SST	BTUH	Ship Wt
FSC463R	N/A	47.00	13.88	Remote(Type II)	Circuit #1	110-120	1	60	2.96	180	2+G	Leads Single	20.00	8900	1,250
				Self-Contained	Circuit #1	208-240	1	60	13.56	2,133	2+G	6-20P or L6-20P	N/A	N/A	
FSC663R	N/A	75.38	13.88	Remote(Type I)	Circuit #1	110-120	1	60	3.46	250	2+G	Leads Single	20.00	12500	1,500
				Self-Contained	Circuit #1	208-240	1	60	20.88	2,158	2+G	6-30P or L6-30P	N/A	N/A	

*** Does not include electric defrost on freezer models.

Important Notes:

1) Electrical specs reflect highest Amp draw using lighted shelves option

Regulatory Approvals:

All Models
 Accordance with AHRI Std 1200
 ETL Listed to UL 471
 ETL Listed to CAN/CSA 22.2 No. 120
 ETL Sanitation to NSF 7



In Accordance with
AHRI Std 1200

DOE 2012
Energy Efficiency
Compliant