

Refrigerated Self-Service End Cap
☐ FSE45R

Lengths include end panels
36-5/8"L x 51-3/8"D x 61"H


MODEL SHOWN: FSE45R

STANDARD FEATURES

- Breeze™ w/EnergyWise s/c refrigeration
- 1" bumper, double strip (specify color)
- Compressor air intake in one side & out other side. All lower panels cannot be blocked
- Full end panel w/mirror interior
- Integrated average product temperature of 40°F or less
- Levelers
- One year parts & labor; 5 year compressor warranty
- Removable deck pans provide complete access to evaporator coil & refrigeration connections
- Shelving removable and adjustable on 1" centers
- T-8 top light

Features	Standard	Options
EXTERIOR COLOR	<input type="checkbox"/> Laminated (non-premium) Confirm pattern/grain direction	<input type="checkbox"/> Laminated (premium) Confirm pattern/grain direction <input type="checkbox"/> Stainless steel (includes lower front panel)
INTERIOR COLOR	<input type="checkbox"/> Black	<input type="checkbox"/> Stainless steel
LOWER FRONT PANEL COLOR	<input type="checkbox"/> Black	<input type="checkbox"/> Stainless steel (w/stainless ext. only)
SHELVING	<input type="checkbox"/> Metal shelves, non-lighted (3)	<input type="checkbox"/> Metal shelves, LED lighted (3) <input type="checkbox"/> Metal shelves, LED lighted (2) <input type="checkbox"/> Metal shelves, T-8 lighted (2) <input type="checkbox"/> Metal shelves, T-8 lighted (3) <input type="checkbox"/> Metal shelves, non-lighted (2)
ELECTRICAL CONNECT	<input type="checkbox"/> 6' straight blade power cord (self cont.)	<input type="checkbox"/> 6' locking power cord (self cont.) <input type="checkbox"/> Electrical leads (remote)
REFRIGERATION	<input type="checkbox"/> Breeze™ w/EnergyWise s/c refrigeration	<input type="checkbox"/> Note: Remote doesn't incl Conds unit. Floor drain reqd. <input type="checkbox"/> Remote w/thermostat, solenoid & TXV
MISCELLANEOUS		<input type="checkbox"/> Clean Sweep® coil cleaner (n/a w/remote) <input type="checkbox"/> Second year parts & labor warranty (excludes compressor)

Product Specifications

Intended Environment: Type I - Designed to operate in ambient conditions of 75°F with 55% relative humidity unless noted otherwise in system information below.

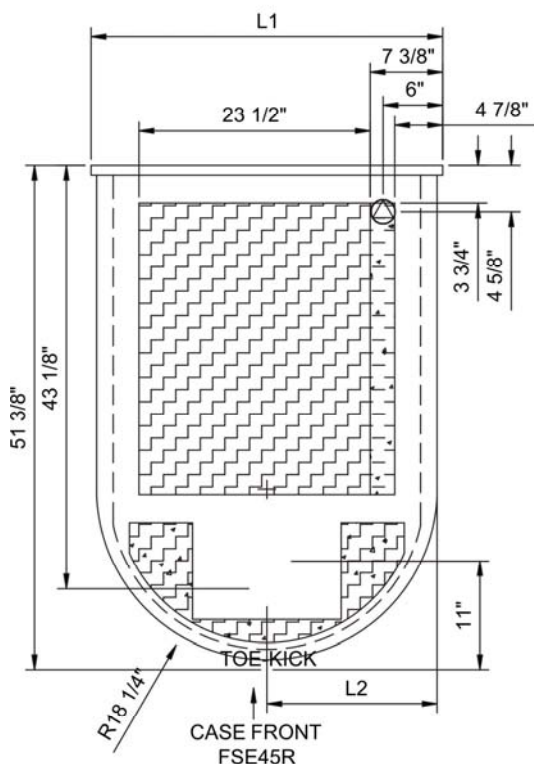
Zone **Intended Product To Be Displayed**

All Packaged refrigerated products

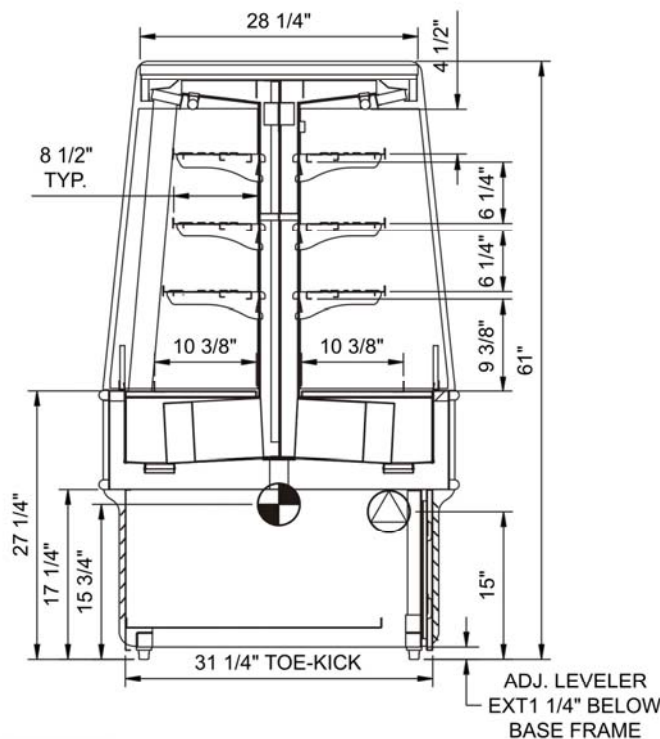
Integrated Prod Temp ° F

40

PLAN VIEW



SIDE VIEW



NOTE: ALL DIMENSIONS APPROXIMATE



ELECTRICAL JUNCTION BOX
(SUPPLIED WITH 6" LEADS OR POWER CORD).
LOCATION OF DRAIN TUBE FOR REMOTE REF.
ONLY (SUPPLIED WITH 3/4" OR 1 1/2" PVC TUBE).



REFRIGERATION LINE CONNECTION.
REMOTE FLOOR SINK & UTILITIES
ACCESS AREA.



SELF-CONTAINED CASE SERVICE ACCESS AREA.
DRY CASE SERVICE ACCESS AREA.

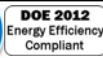
Model Technical Specifications

Model	L"	L1"	L2"	System Circuit Volts			Phs	Freq	Amps ***	Watts	Wires	NEMA Plug	SST	BTUH	Ship Wt	Frt Cls
FSE45R	N/A	36.63	18.25	Remote (Type I)	Circuit #1	110-120	1	60	2.97	305	2+G	Leads Multiple	20	7,675	950	110
				Self-Contained	Circuit #1	110/230V	1	60	14.40	2,394	3+G	14-20P or L14-20P	N/A	N/A		

*** Does not include electric defrost on freezer models.

Regulatory Approvals:

All Models
 Accordance with AHRI Std 1200
 ETL Listed to UL 471
 ETL Listed to CAN/CSA 22.2 No. 120
 ETL Sanitation to NSF 7



Important Notes:

- 1) ELECTRICAL NOTE: If GFCI is required, a GFCI breaker MUST be used in lieu of a GFCI receptacle
- 2) 37" minimum door entry clearance required (without shipping skid).
- 3) Units are supplied with levelers. They must be adjusted during installation to ensure the unit is level and plumb. Dimensions reflect levelers extended 1 1/4".
- 4) Performance issues (product temperatures, water on floor, etc.) caused by adverse conditions are not covered by warranty.
- 5) Keep unit at least 15" from exterior doors, overhead HVAC vents, or any air curtain disruption.
- 6) End panels must be tightly joined or kept at least 6" away from any structure to prevent condensation.
- 7) Do not expose unit to direct sunlight or any heat source (ovens, fryers, etc.).