

Refrigerated Self-Service End Cap

FSE663R

Lengths include end panels
 75-3/8"L x 49-1/2"D x 63"H



Conforms to NSF STD 7
TYPE II

STANDARD FEATURES

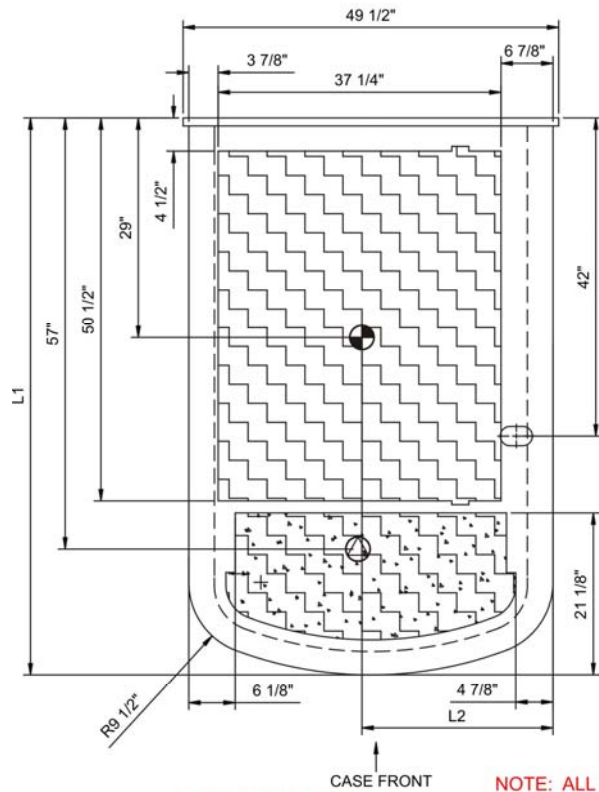
- Breeze~E (Type-II) w/ EnergyWise s/c refrigeration
- Compressor air intake in one side & out other side. All lower panels cannot be blocked
- Full end panel w/mirror interior
- Integrated average product temperature of 40°F or less
- LED top light
- One year parts & labor; 5 year compressor warranty
- Rail system for shims
- Removable deck pans provide complete access to evaporator coil & refrigeration connections

Features	Standard	Options
EXTERIOR COLOR	<input type="checkbox"/> Laminated (non-premium) Confirm pattern/grain direction	<input type="checkbox"/> Laminated (premium) Confirm pattern/grain direction <input type="checkbox"/> Stainless steel (includes lower front panel)
INTERIOR COLOR	<input type="checkbox"/> Black	<input type="checkbox"/> Stainless steel
LOWER FRONT PANEL COLOR	<input type="checkbox"/> Black	<input type="checkbox"/> Stainless steel (w/stainless ext. only)
SHELVING	<input type="checkbox"/> Non-adjustable metal shelves, non-lighted	<input type="checkbox"/> Non-adjustable metal shelves, lighted (LED)
ELECTRICAL CONNECT	<input type="checkbox"/> 6' straight blade power cord (self-cont.)	<input type="checkbox"/> 6' locking power cord (self-cont.) <input type="checkbox"/> Electrical leads (remote)
REFRIGERATION	<input type="checkbox"/> Breeze~E (Type-II) w/ EnergyWise s/c refrigeration	<input type="checkbox"/> Note: Remote doesn't incl Conds unit. Floor drain reqd. <input type="checkbox"/> Remote w/thermostat, solenoid & TXV
MISCELLANEOUS		<input type="checkbox"/> Second year parts & labor warranty (excludes compressor)

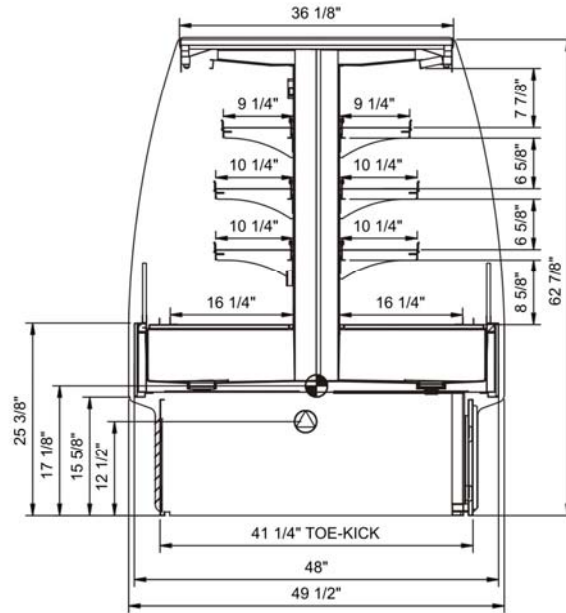
Product Specifications

Intended Environment: Type II - Designed to operate in ambient conditions of 80°F and 60% relative humidity unless noted otherwise in system information below.	
Zone	Integrated Prod Temp ° F
All	40

PLAN VIEW



SIDE VIEW



NOTE: ALL DIMENSIONS APPROXIMATE

- ELECTRICAL JUNCTION BOX (SUPPLIED WITH 6" LEADS OR POWER CORD).
- LOCATION OF DRAIN TUBE FOR REMOTE REF. ONLY (SUPPLIED WITH 3/4" OR 1 1/2" PVC TUBE).
- REFRIGERATION LINE CONNECTION.
- REMOTE FLOOR SINK & UTILITIES ACCESS AREA.
- SELF-CONTAINED CASE SERVICE ACCESS AREA.
- DRY CASE SERVICE ACCESS AREA.

Model Technical Specifications

Model	L"	L1"	L2"	System Circuit Volts		Phs	Freq	Amps ***	Watts	Wires	NEMA Plug	SST	BTUH	Ship Wt	Frts Cls	
FSE663R	N/A	75.38	25.13	Remote(Type I)	Circuit #1	110-120	1	60	7.77	434	2+G	Leads Multiple	20.00	16,200	1,450	110
				Self-Contained	Circuit #1	208-240	1	60	22.39	3,077	2+G	6-30P or L6-30P	N/A	N/A		

*** Does not include electric defrost on freezer models.

Regulatory Approvals:	
All Models	Accordance with AHRI Std 1200 ETL Listed to UL 471 ETL Listed to CAN/CSA 22.2 No. 120 ETL Sanitation to NSF 7

Important Notes:

- 1) ELECTRICAL NOTE: If GFCI is required, a GFCI breaker MUST be used in lieu of a GFCI receptacle
- 2) Compressor air side intake and side discharge
- 3) 50" minimum door entry clearance required (without shipping skid).
- 4) Performance issues (product temperatures, water on floor, etc.) caused by adverse conditions are not covered by warranty.
- 5) Keep unit at least 15' from exterior doors, overhead HVAC vents, or any air curtain disruption.
- 6) End panels must be tightly joined or kept at least 6" away from any structure to prevent condensation.
- 7) Do not expose unit to direct sunlight or any heat source (ovens, fryers, etc.).



In Accordance with
AHRI Std 1200

DOE 2012
Energy Efficiency
Compliant