

Product Specifications

Refrigerated Self-Service Island

Lengths include end panels

FSI863R

99-3/4"L x 48"D x 63"H



MODEL SHOWN: FSI863R

Conforms to NSF STD 7
TYPE II

STANDARD FEATURES

- Remote w/thermostat, solenoid & TXV (NSF Type II conditions)
- Integrated average product temperature of 40°F or less
- LED 4200K top light
- One year parts & labor warranty
- Price tag moulding (matches interior color)
- Rail system for shims
- Removable deck pans provide complete access to evaporator coil & refrigeration connections

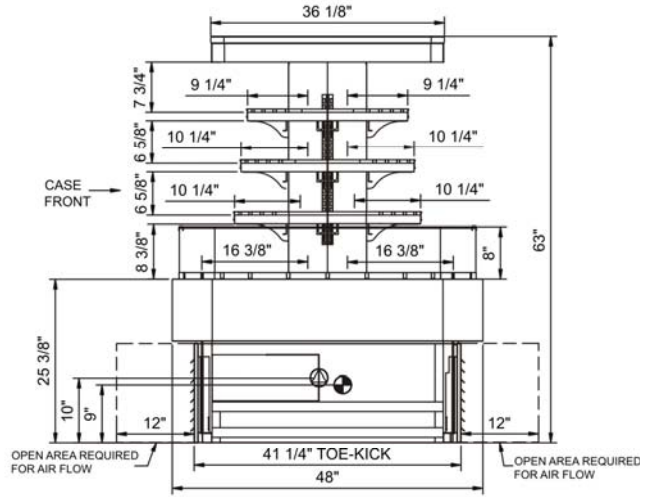
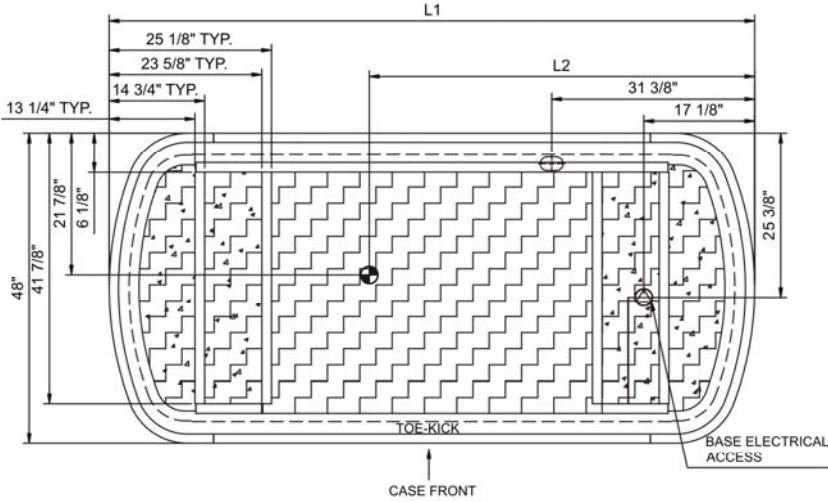
Features	Standard	Options
EXTERIOR COLOR	<input type="checkbox"/> Laminated (non-premium) Confirm pattern/grain direction	<input type="checkbox"/> Laminated (non-premium) Confirm pattern/grain direction <input type="checkbox"/> Stainless steel (includes lower front panel)
INTERIOR COLOR	<input type="checkbox"/> Black	<input type="checkbox"/> Stainless steel
LOWER FRONT PANEL COLOR	<input type="checkbox"/> Black	<input type="checkbox"/> Stainless steel (w/stainless exterior only)
SHELVING	<input type="checkbox"/> Non-adjustable metal shelves, non-lighted	<input type="checkbox"/> Non-adjustable metal shelves, lighted (LED 4200K)
ELECTRICAL CONNECT	<input type="checkbox"/> Electrical leads (remote)	<input type="checkbox"/> 6' locking power cord (self-cont.) <input type="checkbox"/> 6' straight blade power cord (self-cont.)
REFRIGERATION	<input type="checkbox"/> Remote w/thermostat, solenoid & TXV (NSF Type II conditions)	<input type="checkbox"/> Breeze™ w/EnergyWise s/c refrigeration (For Type I Conditions Only) <input type="checkbox"/> Note: Remote doesn't incl Conds unit. Floor drain reqd.
MISCELLANEOUS		<input type="checkbox"/> Second year parts & labor warranty (excludes compressor)

Product Specifications

Intended Environment: Type II - Designed to operate in ambient conditions of 80°F and 60% relative humidity unless noted otherwise in system information below.	
Zone	Integrated Prod Temp ° F
All	40

PLAN VIEW

SIDE VIEW



NOTE: ALL DIMENSIONS APPROXIMATE

- ELECTRICAL JUNCTION BOX (SUPPLIED WITH 6" LEADS OR POWER CORD).
- REFRIGERATION LINE CONNECTION.
- SELF-CONTAINED CASE SERVICE ACCESS AREA.
- LOCATION OF DRAIN TUBE FOR REMOTE REF. ONLY (SUPPLIED WITH 3/4" OR 1 1/2" PVC TUBE).
- REMOTE FLOOR SINK & UTILITIES ACCESS AREA.
- DRY CASE SERVICE ACCESS AREA.

Model Technical Specifications

Model	L"	L1"	L2"	System Circuit Volts		Phs	Freq	Amps ***	Watts	Wires	NEMA Plug	SST	BTUH	Ship Wt	
FSI863R	N/A	99.75	59.50	Remote(Type I)	Circuit #1	110-120	1	60	8.57	548	2+G	Leads Multiple	20.00	17000	2,500
				Remote(Type II)	Circuit #1	110-120	1	60	8.57	548	2+G	Leads Multiple	20.00	22500	
				Self-Contained	Circuit #1	208-240	1	60	23.73	3,276	2+G	6-30P	N/A	N/A	

*** Does not include electric defrost on freezer models.

Important Notes:

- 1) ELECTRICAL NOTE: If GFCI is required, a GFCI breaker MUST be used in lieu of a GFCI receptacle
- 2) NOTE: Electrical specs reflect highest Amp draw using lighted shelves option
- 3) Breeze™ w/EnergyWise s/c refrigeration is for use in Type I conditions only

Regulatory Approvals:

All Models	Accordance with AHRI Std 1200 ETL Listed to UL 471 ETL Listed to CAN/CSA 22.2 No. 120 ETL Sanitation to NSF 7
------------	--



In Accordance with
AHRI Std 1200

DOE 2012
Energy Efficiency
Compliant